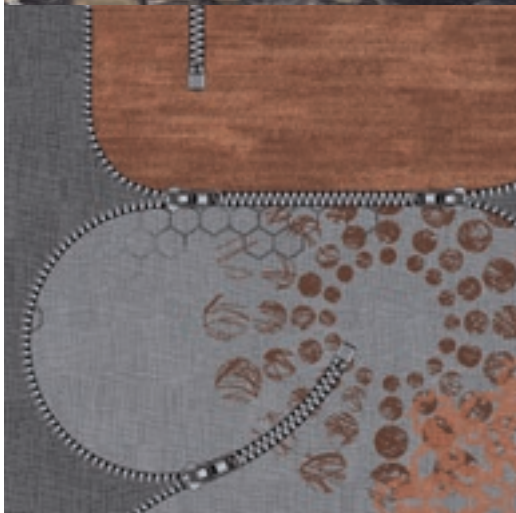




# corridor

CONCEPTS





# 50 CORRIDORS





**de** Ankommen und sich wohlfühlen.

Flure, Entrées und öffentliche Bereiche vermitteln einen ersten Eindruck von Ihrem Ambiente. Das Wohlbefinden der Gäste spielt dabei eine entscheidende Rolle. Innovative, hochwertige Teppichböden wirken hier positiv in vielerlei Hinsicht: haptisch, optisch und akustisch. Sie müssen gerade im Korridorbereich eine Vielzahl von Anforderungen erfüllen. Komfort, Belastbarkeit, Ergonomie sowie gute Tritt- und Raumschallwerte sind die entscheidenden Vorteile.

Teppichboden hat aber auch eine enorme visuelle Ausdruckskraft. Mit ihm lassen sich einzigartige Themen- und Erlebniswelten auf dem Boden verwirklichen. Flure müssen nicht eintönig sein – eine kreative Gestaltung wird zum Blickfang und unterstreicht die Besonderheit Ihres Hauses. Alles ist möglich: ob elegante Muster, opulente Inszenierungen, modern-sachliches oder expressives Design sowie Holz- und Steinoptik.

Unser kompetentes Designteam entwickelt in Zusammenarbeit mit Inneneinrichtern, Architekten und Eigentümern einzigartige Lösungen für jedes Objekt. Dabei wird die Teppichbodengestaltung exakt auf den Bauplan des Gebäudes abgestimmt – ganz individuell.

Lassen Sie sich in dieser Broschüre von der großen Bandbreite an Möglichkeiten inspirieren.

**en** Arrive and feel good straight away.

Hallways, entrances and public areas give the first impression of your ambience. Here the wellbeing of your guests plays a decisive role. Innovative, high-quality carpets exert positive effects here in several senses – haptically, visually and acoustically. In corridor areas these carpets must satisfy many different requirements, and the decisive factors are comfort, durability and ergonomics, plus the footfall and room noise levels.

But carpets also have an immense expressive force visually. Through them, unique themes and worlds of experience play out on the floor. Corridors need not be monotonous, and a more creative design will catch the eye and lend your establishment a special touch. Anything is possible – from elegant patterns to opulent mise-en-scènes, sober modernism or expressive design, or even a wood or stone look.

Working together with interior designers, architects and proprietors, our competent design team develops unique solutions for every property. We design the carpeting exactly to the layout of the building, on a completely bespoke basis.

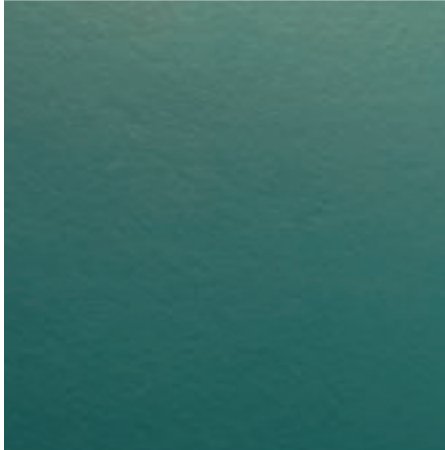
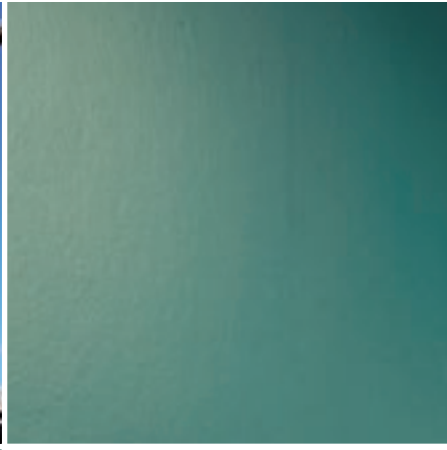
Let the wide range of possibilities in this brochure inspire you.

**fr** Arriver, se sentir bien. Ce sont d'emblée les couloirs, les entrées et les espaces communs qui donnent une première impression de l'atmosphère générale qui règne chez vous. Et le bien-être de vos hôtes joue un rôle décisif. Pour cela, des moquettes innovantes et de qualité ont un effet positif important à plusieurs égards, du point de vue du contact, du visuel et de l'acoustique. Dans les couloirs, elles doivent satisfaire à de nombreuses exigences. Confort, résistance, ergonomie et la capacité de bien absorber les pas et les sons sont des avantages décisifs.

Les moquettes ont également un énorme impact visuel. Elle permettent de créer des univers thématiques et événementiels uniques sur le sol. Il est important que les couloirs ne soient pas monotones : un aménagement original attire le regard et souligne la particularité de votre lieu. Tout est possible : aussi bien des motifs élégants que des mises en scène opulentes, un design moderne et sobre ou au contraire riche en éléments, même l'aspect du bois ou de la pierre.

Notre équipe compétente de designers développe des solutions uniques pour chaque projet, en collaboration avec des décorateurs d'intérieur, des architectes et des propriétaires. Chaque moquette est adaptée précisément à la structure du bâtiment, chaque solution est entièrement personnalisée.

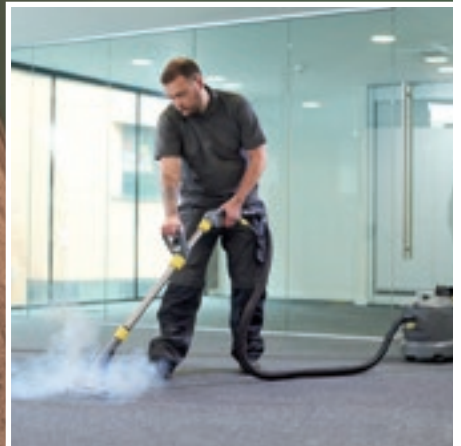
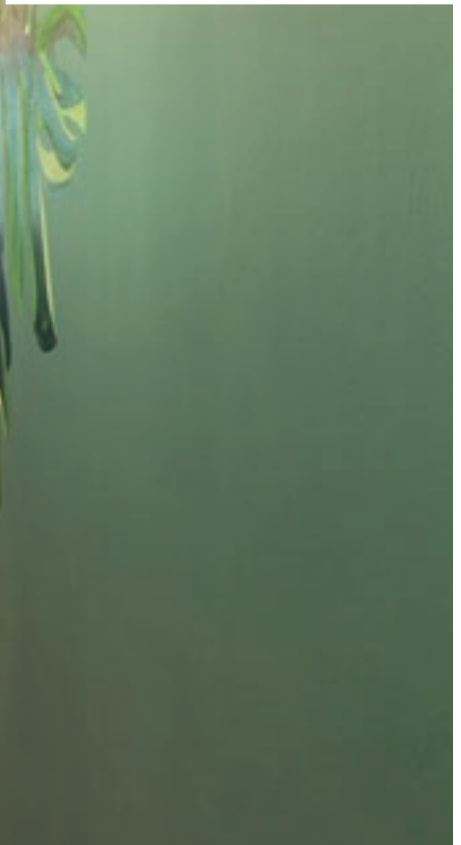
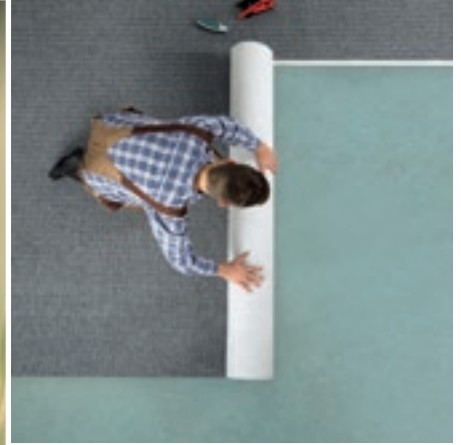
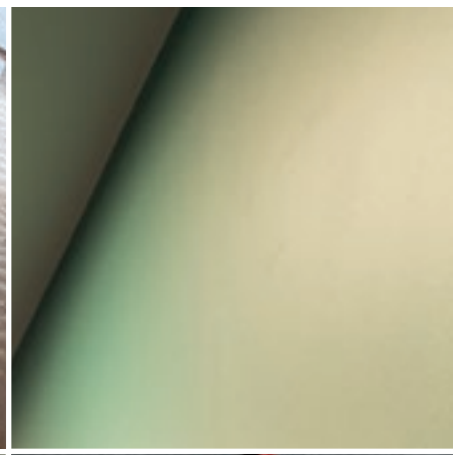
Laissez-vous inspirer par le large éventail de possibilités présenté dans cette brochure.



26

# REFERENCES









OBJEKT | PROJECT

Mandarin Oriental Munich

Größe | Size

48 Zimmer | 48 rooms  
25 Suiten | 25 suites

[www.mandarinoriental.com](http://www.mandarinoriental.com)

TEPPICHBODEN | CARPET

Menge | Quantity

856 m<sup>2</sup>

Qualität | Quality

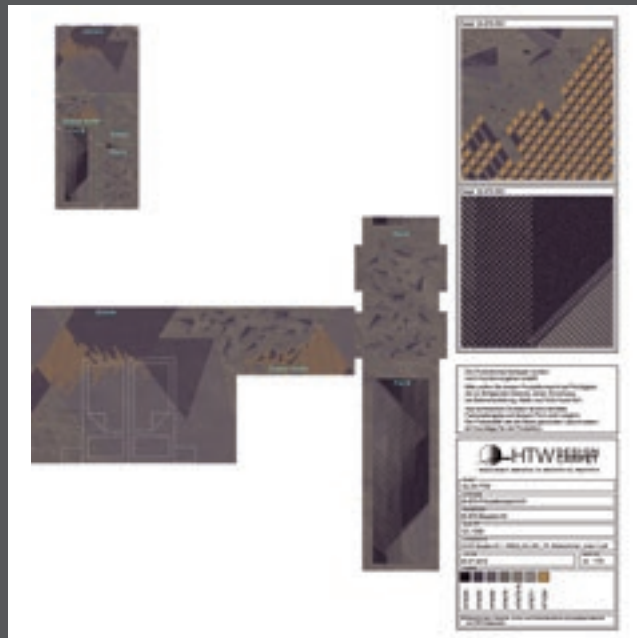
DC Wool 1850

DESIGNKONZEPT | DESIGN CONCEPT

Fünf-Sterne-Luxus in der malerischen Altstadt Münchens. Das zeitlose, elegante Design des Interieurs hinterlässt einen bleibenden Eindruck.

Five-star luxury in Munich's picturesque Old Town. The timeless, elegant interior design leaves a lasting impression.





**OBJEKT | PROJECT**

the niu Air

**Anlass | Occasion**

Neubau | New building

[www.theniu.de](http://www.theniu.de)

**TEPPICHBODEN | CARPET**

**Menge | Quantity**

3420 m<sup>2</sup> Flure / Corridors  
5480 m<sup>2</sup> Zimmer / rooms

**Qualität | Quality**

DC 1050 ZR

**DESIGNKONZEPT | DESIGN CONCEPT**

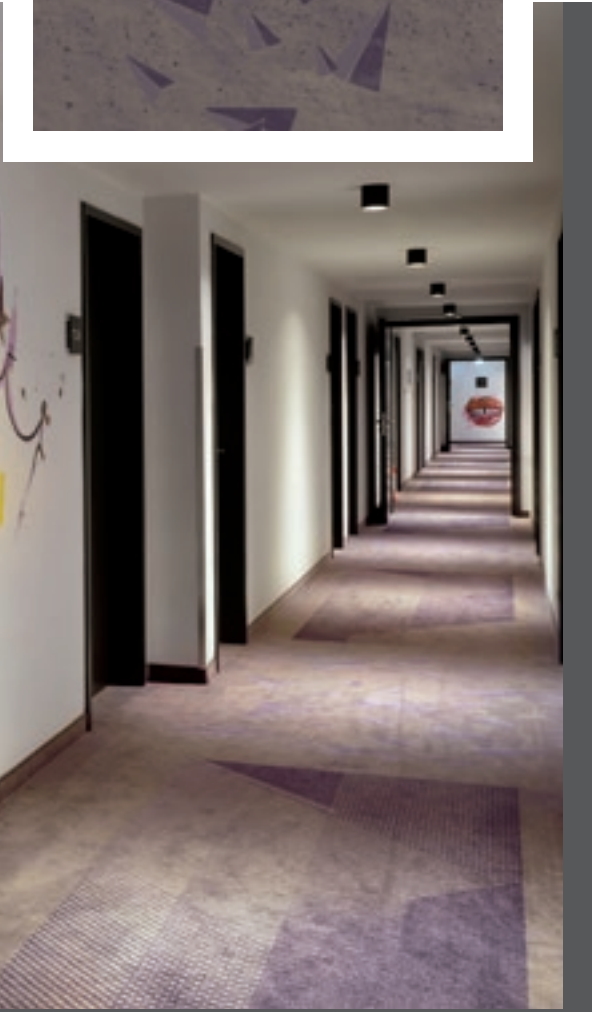
Das the niu „Air“ ist eine namentliche Hommage an die Zeit der imposanten Zeppeline.

The niu „Air“ is named to commemorate the era of airships and dirigibles.





HOTELS  
**the niu Air**  
Frankfurt am Main



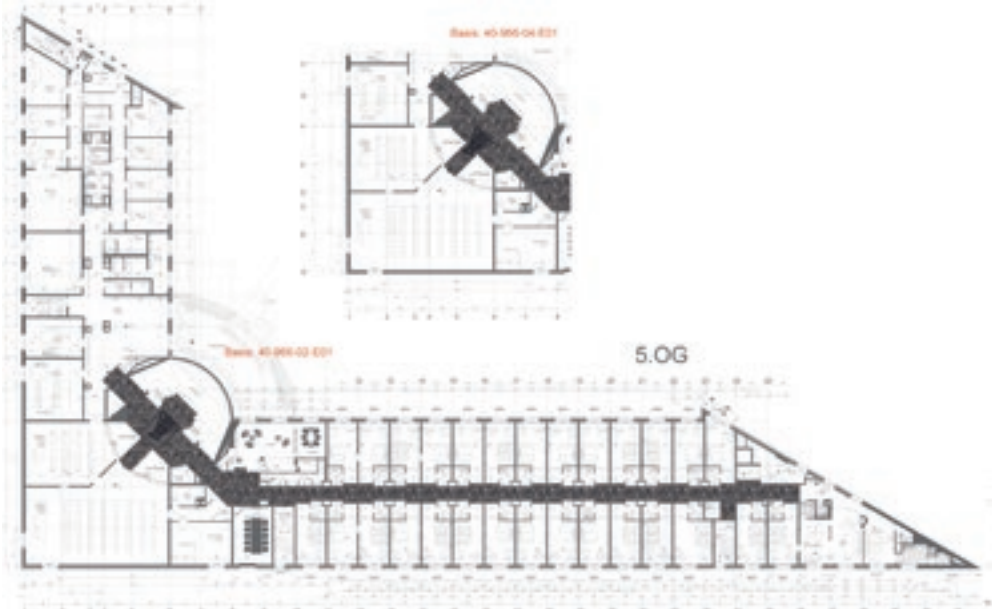
HOTELS

**DORINT**

Dortmund

**Dorint**

An den Westfalenhallen  
Dortmund



**OBJEKT | PROJECT**

**Dorint Hotel Dortmund**

**Anlass | Occasion**  
Renovierung | Renovation

**Größe | Size**  
216 Zimmer | 216 rooms  
5 Suiten | 5 suites

[www.dorint.de](http://www.dorint.de)

**TEPPICHBODEN | CARPET**

**Menge | Quantity**  
473 m<sup>2</sup>

**Qualität | Quality**  
DC 900

**DESIGNKONZEPT | DESIGN CONCEPT**

Designthema ist hier die Steinkohleförderung, die dazu beitrug, das Ruhrgebiet zum wirtschaftlichen und kulturellen Zentrum Westfalens zu machen. Dortmund gilt hier als Ruhrmetropole mit spannender Industriekultur.

Here the design theme is coal mining, which contributed to making the Ruhr into the economic and cultural centre of Westphalia. Dortmund is regarded as a Ruhr metropolis with an exciting industrial culture.



Color	Code	Color	Code	Color	Code	Color	Code
Blue	A1	Grey	A2	Blue	A3	Grey	A4
Blue	A5	Grey	A6	Blue	A7	Grey	A8
Blue	A9	Grey	A10	Blue	A11	Grey	A12
Blue	A13	Grey	A14	Blue	A15	Grey	A16
Blue	A17	Grey	A18	Blue	A19	Grey	A20

**ITW WAB**

Product Name: **ITW WAB**

Manufacturer: **ITW WAB**

Material: **ITW WAB**

Color: **ITW WAB**

Code: **ITW WAB**

Quantity: **ITW WAB**

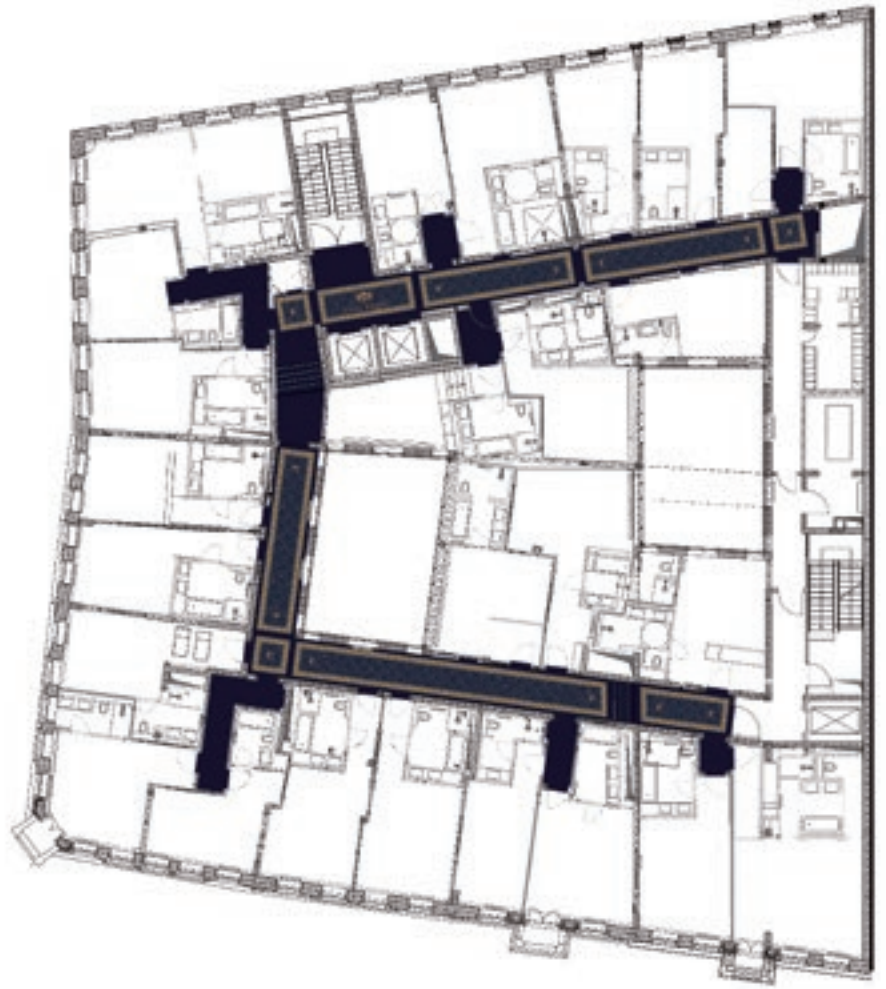
Unit: **ITW WAB**

Notes: **ITW WAB**

HOTELS

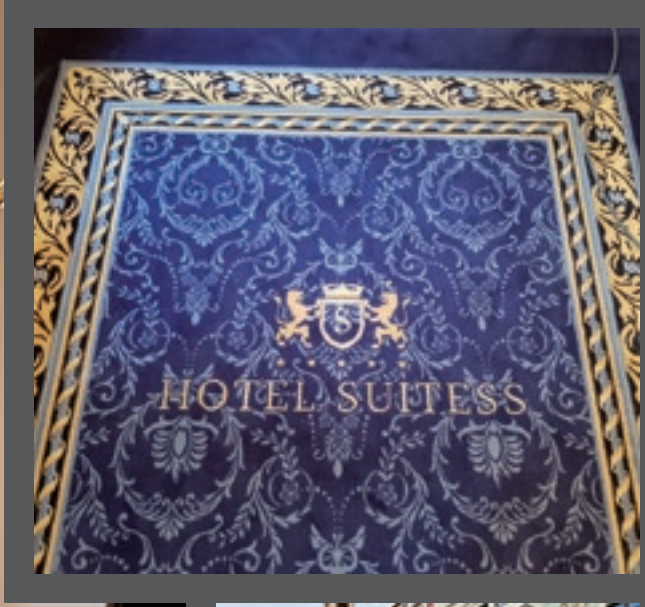
# Hotel Suitess

Dresden



HOTEL SUITESS





**OBJEKT | PROJECT**

**Hotel SuiteSS**  
5-Sterne-Superior-Hotel

**Anlass | Occasion**  
Erweiterung | Expansion

**Größe | Size**  
78 Zimmer & Suiten | 78 rooms & suites  
[www.suitess-hotel.com](http://www.suitess-hotel.com)

**TEPPICHBODEN | CARPET**

**Menge | Quantity**  
1114 m<sup>2</sup> Flure / Corridors  
832 m<sup>2</sup> Zimmer / rooms

**Qualität | Quality**  
DC 1402

**DESIGNKONZEPT | DESIGN CONCEPT**

Die Gestaltung verbindet den modernen 5-Sterne Standard mit dem luxuriösen Ambiente vergangener Grand-Hotel Zeiten.

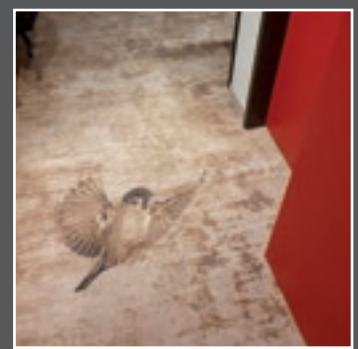
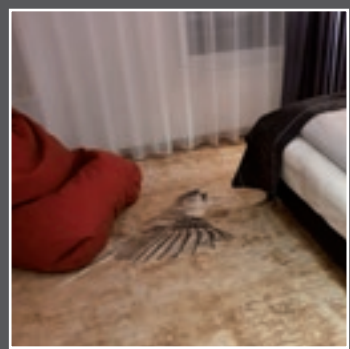
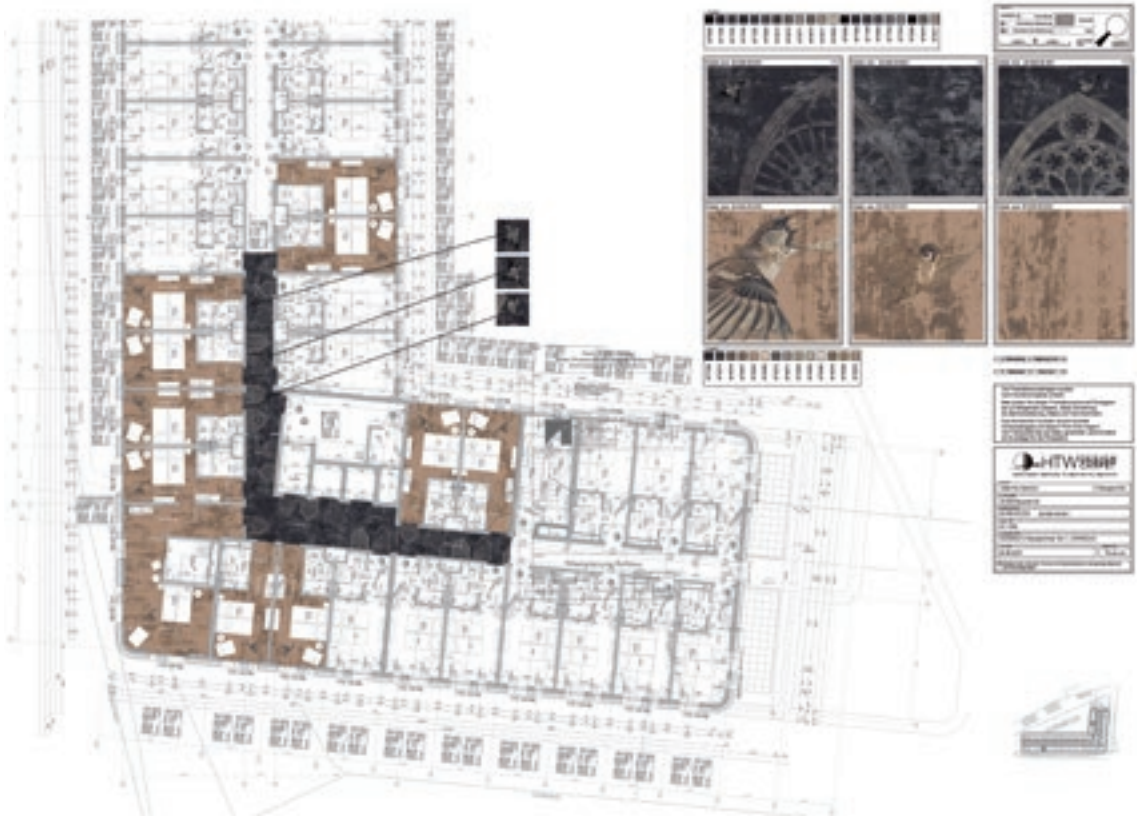
The design combines the modern 5-star standard with the luxurious ambience of grand hotels of the past.



HOTELS

# the niu Sparrow

Regensburg



OBJEKT | PROJECT

the niu Sparrow

Anlass | Occasion

Neubau | New building

www.theniu.de

TEPPICHBODEN | CARPET

Menge | Quantity

1050 m<sup>2</sup> Flure / Corridors

5000 m<sup>2</sup> Zimmer / rooms

Qualität | Quality

DC1050

DESIGNKONZEPT | DESIGN CONCEPT

Der Name "Sparrow" (übersetzt: Spatz) ist eine Hommage an die berühmten Regensburger Domspatzen und den liebenswerten Kosenamen Spatz.

The name „Sparrow“ (German: Spatz) pays tribute to the famous Regensburg Cathedral Choir and the lovable nickname sparrow.

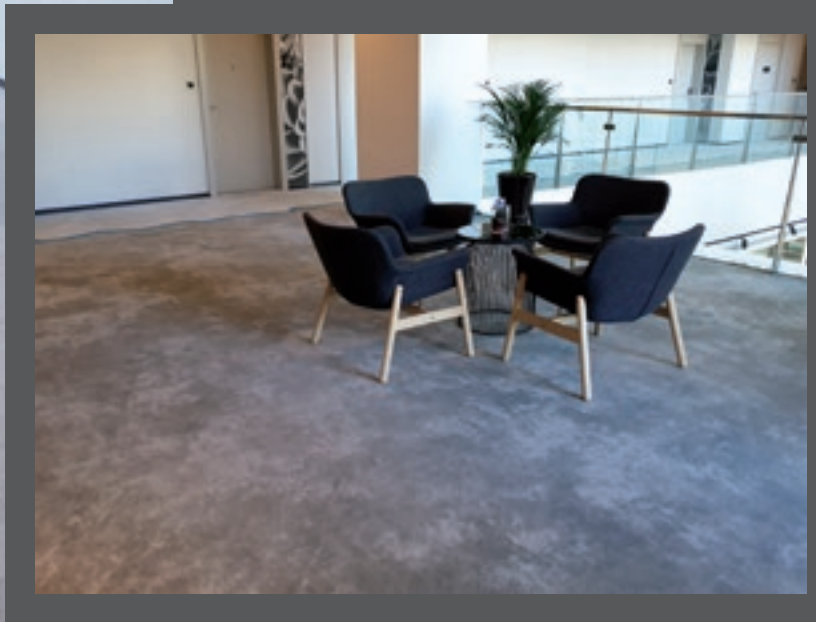
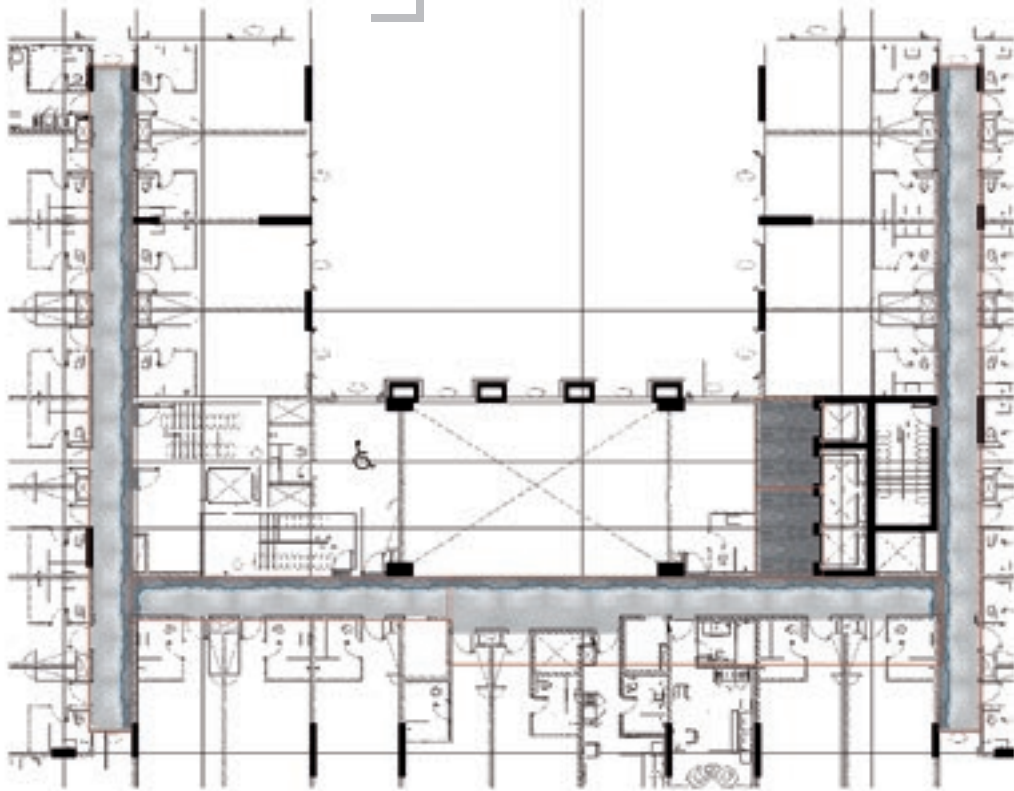


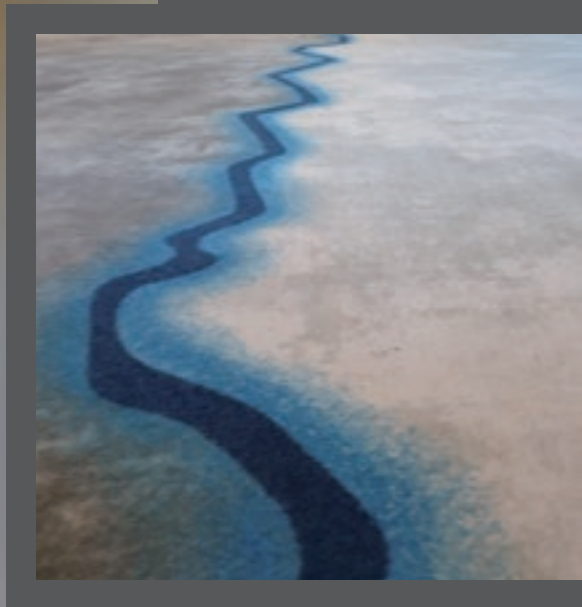
HOTELS

# The Manor by JA

Dubai

# MANOR





OBJEKT | PROJECT

The Manor Hotel by JA

**Anlass | Occasion**  
Neubau | New building

**Größe | Size**  
233 Zimmer | 233 rooms

[www.jaresortshotels.com/dubai/the-manor-by-ja](http://www.jaresortshotels.com/dubai/the-manor-by-ja)

TEPPICHBODEN | CARPET

**Menge | Quantity**  
1680 m<sup>2</sup>

**Qualität | Quality**  
AP 900 FZ 550g

DESIGNKONZEPT | DESIGN CONCEPT

Elegantes Hotel mit einzigartigem Design.

Elegant hotel with unique design.



OBJEKT | PROJECT

the niu Ridge

Anlass | Occasion  
Neubau | New building

[www.theniu.de](http://www.theniu.de)

TEPPICHBODEN | CARPET

Menge | Quantity

1040 m<sup>2</sup> Flure / Corridors  
3850 m<sup>2</sup> Zimmer / rooms

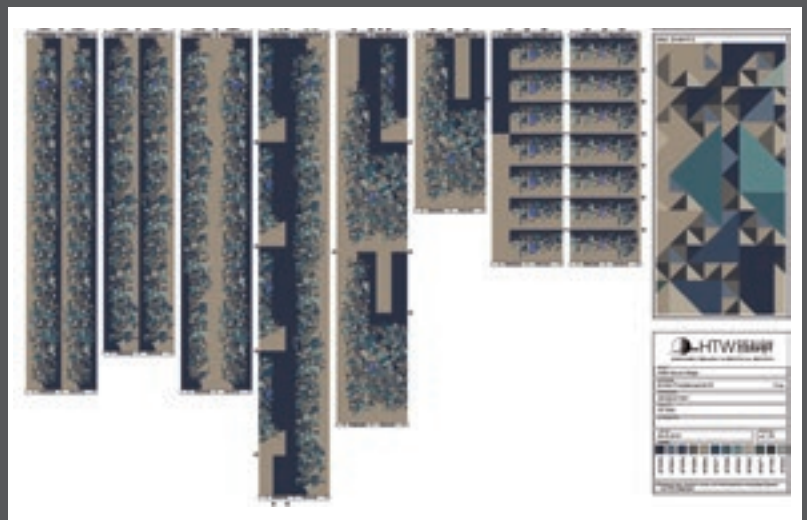
Qualität | Quality

DC 1050 ZR

DESIGNKONZEPT | DESIGN CONCEPT

Ridge bedeutet Kante/ Ecke und erinnert an die Salzgewinnung in Halle. Die polygonalen Formen der Salzkristalle wurden im the niu Ridge kreativ in Szene gesetzt.

The niu Ridge is named for the ridges of salt production, which is a key industry in Halle. The polygon formation of the salt crystals has been creatively reimaged at the niu Ridge.



the  
niu

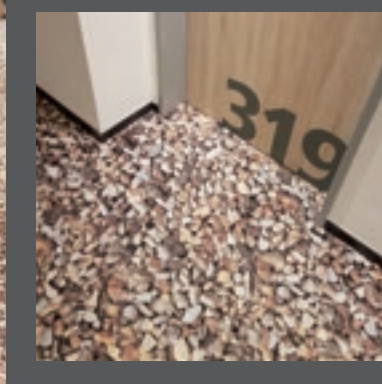
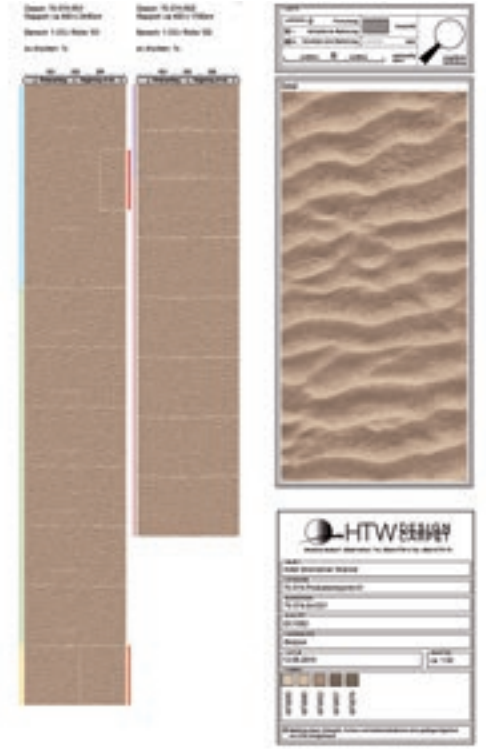
HOTELS

# the niu Ridge

Halle



HOTELS  
**Wonnemar**  
 Wismar



OBJEKT | PROJECT

WONNEMAR Resort-Hotel

Anlass | Occasion

Neubau | New building

www.wonnemar-resorts.de

TEPPICHBODEN | CARPET

Menge | Quantity

550 m<sup>2</sup>

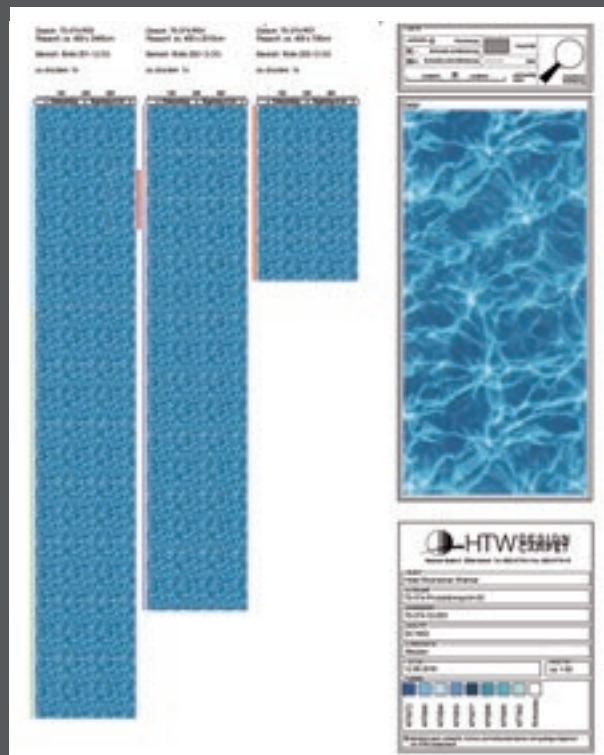
Qualität | Quality

DC 1052

DESIGNKONZEPT | DESIGN CONCEPT

Familienfreundliches Resort-Hotel mit großem Spa, Erlebnis- und Spaßbad Bereich. Die Bodengestaltung nimmt Bezug auf die einzigartige Natur mit Meer, Sand und Strand.

A family-friendly resort hotel with a large spa, adventure and play pool area. The floor design makes reference to the unique natural surroundings with the sea, sand and beaches.





#### OBJEKT | PROJECT

the niu Fury

#### Anlass | Occasion

Neubau | New building

[www.theniu.de](http://www.theniu.de)

#### TEPPICHBODEN | CARPET

#### Menge | Quantity

937 m<sup>2</sup> Flure / Corridors  
3474 m<sup>2</sup> Zimmer / rooms

#### Qualität | Quality

DC 1050

#### DESIGNKONZEPT | DESIGN CONCEPT

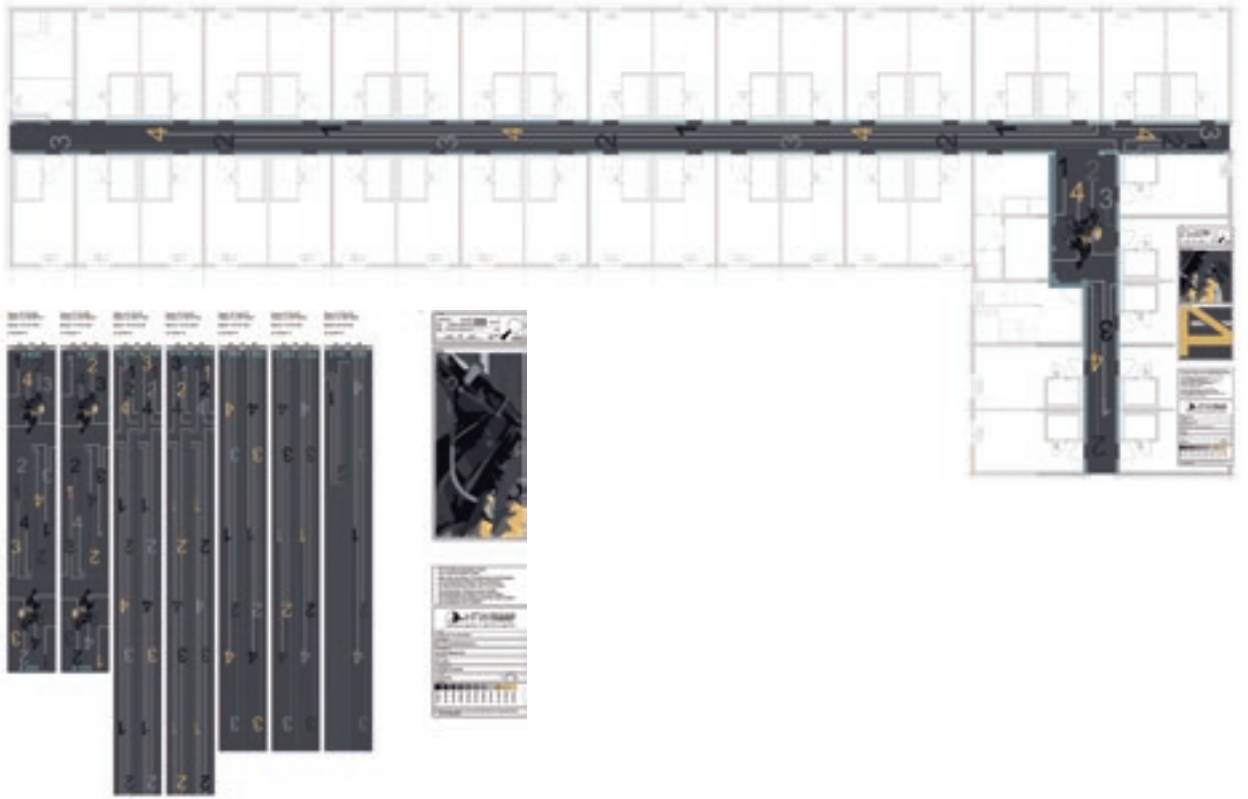
Der Name Fury ist eine Anspielung an die, nur einen Steinwurf entfernt liegende, traditionelle Galopprennbahn in München-Riem.

The name Fury is, of course, a reminder of the traditional horse racing track in Munich-Riem, which is just a hop and a skip away.





HOTELS  
**the niu Fury**  
Aschheim

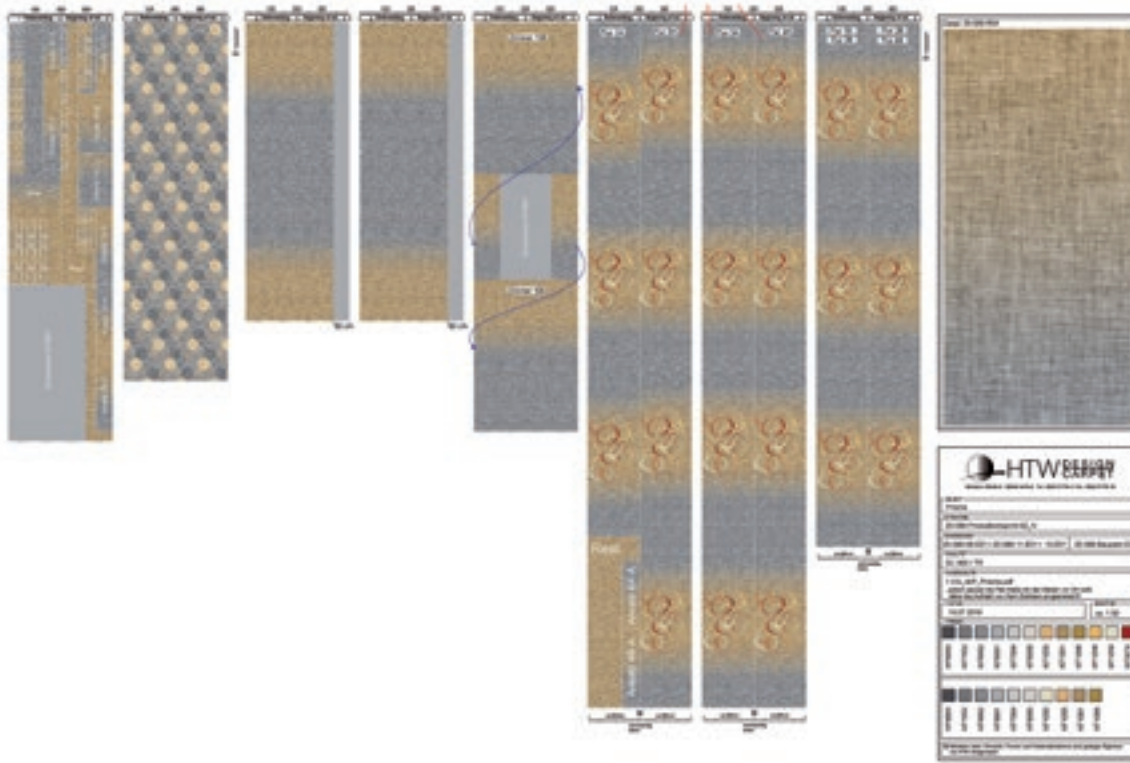


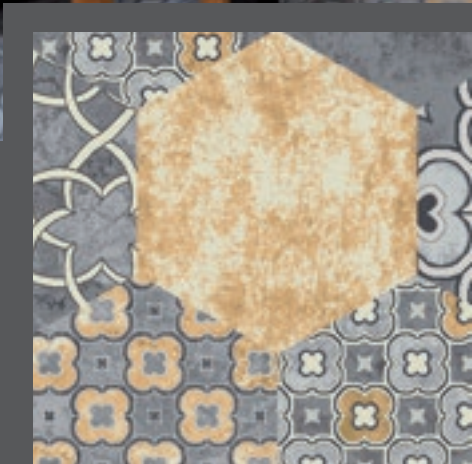
HOTELS

# Best Western Prisma

Neumünster

**BW** | Best Western  
Hotels & Resorts





#### OBJEKT | PROJECT

Best Western Prisma

#### Anlass | Occasion

Neubau | New building

[www.hotel-prisma.de](http://www.hotel-prisma.de)

#### TEPPICHBODEN | CARPET

#### Menge | Quantity

330 m<sup>2</sup> Flure / Corridors

1990 m<sup>2</sup> Zimmer / rooms

#### Qualität | Quality

DC 900 ZR

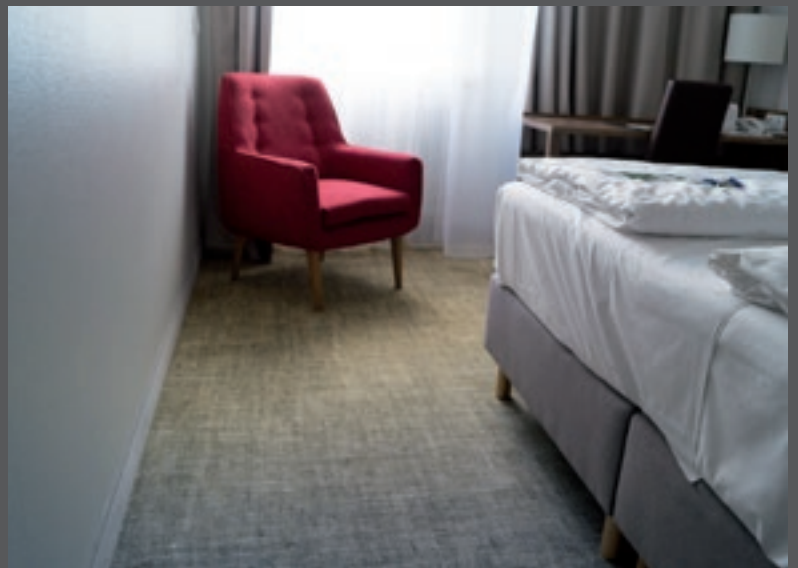
#### DESIGNKONZEPT | DESIGN CONCEPT

Die Grundfläche des Prismas findet sich in der Bodengestaltung des Restaurants wieder - mit Designs aus der Kollektion Shape & Create.

Für die Gestaltung der Flure wurden Designs aus den Kollektionen Mega Tiles und Nightlife Flair kombiniert.

The base of the prism is reflected in the restaurant with designs from the Shape & Create collection.

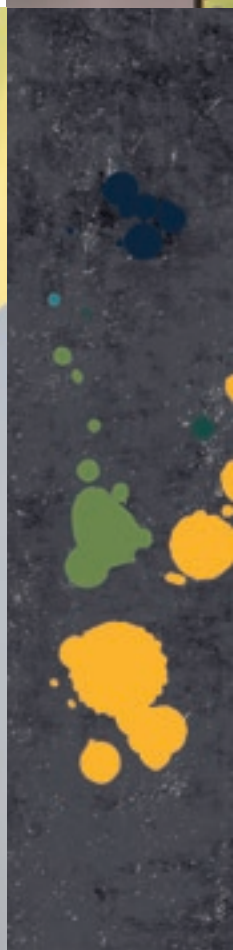
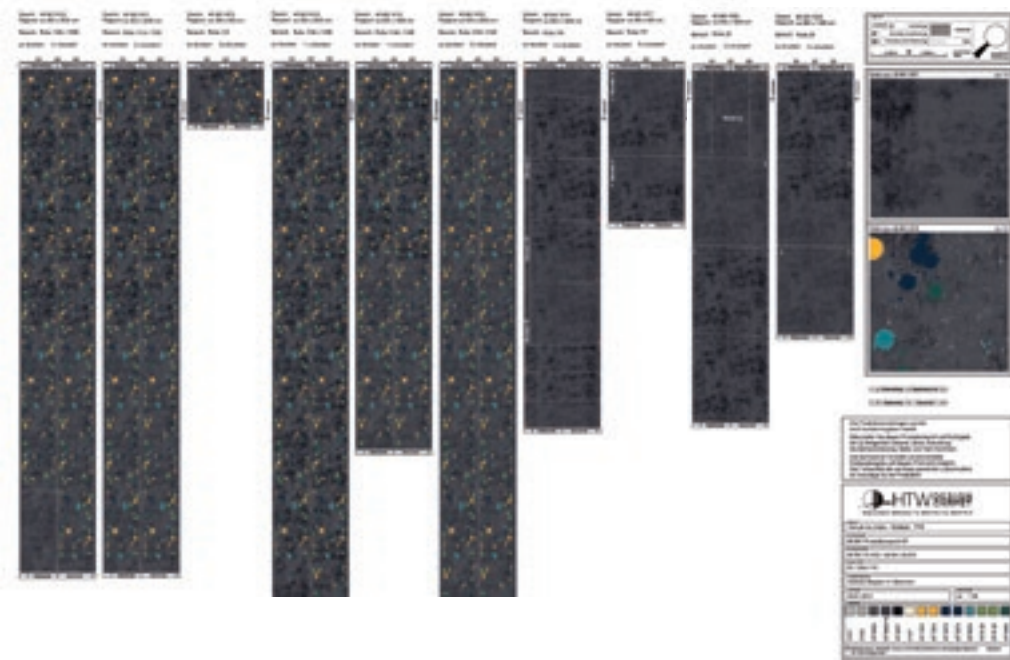
For the corridors, designs were combined from the Mega Tiles and Nightlife Flair collections.



HOTELS

# the niu Charly

Frankfurt am Main





OBJEKT | PROJECT

the niu Charly

Anlass | Occasion

Neubau | New building

[www.theniu.de](http://www.theniu.de)

TEPPICHBODEN | CARPET

Menge | Quantity

1215 m<sup>2</sup> Flure / Corridors  
3520 m<sup>2</sup> Zimmer / rooms

Qualität | Quality

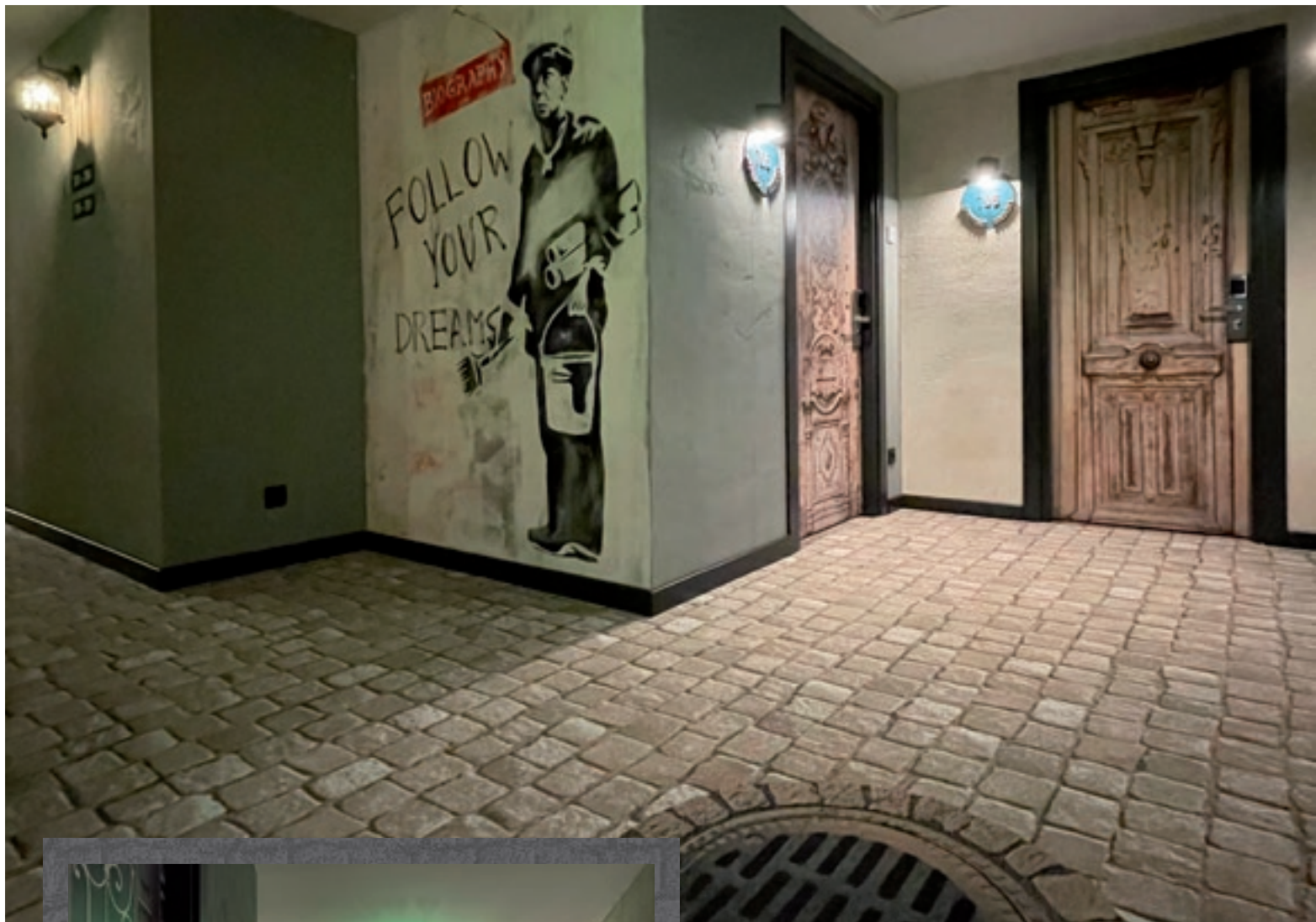
DC 1050 ZR

DESIGNKONZEPT | DESIGN CONCEPT

Der Name Charly deutet die Nähe zum Karlsplatz an und ist ein Gruß an Frankfurts legendären Gründer: Karl, „den Großen“.

Charly gets its name from being close to the Karlsplatz and as shout-out to Frankfurt's founder, the legendary Charlemagne.





OBJEKT | PROJECT

Kolkhi Biography

Anlass | Occasion

Renovierung | Renovation

TEPPICHBODEN | CARPET

Menge | Quantity

920 m<sup>2</sup>

Qualität | Quality

AP 930 S

DESIGNKONZEPT | DESIGN CONCEPT

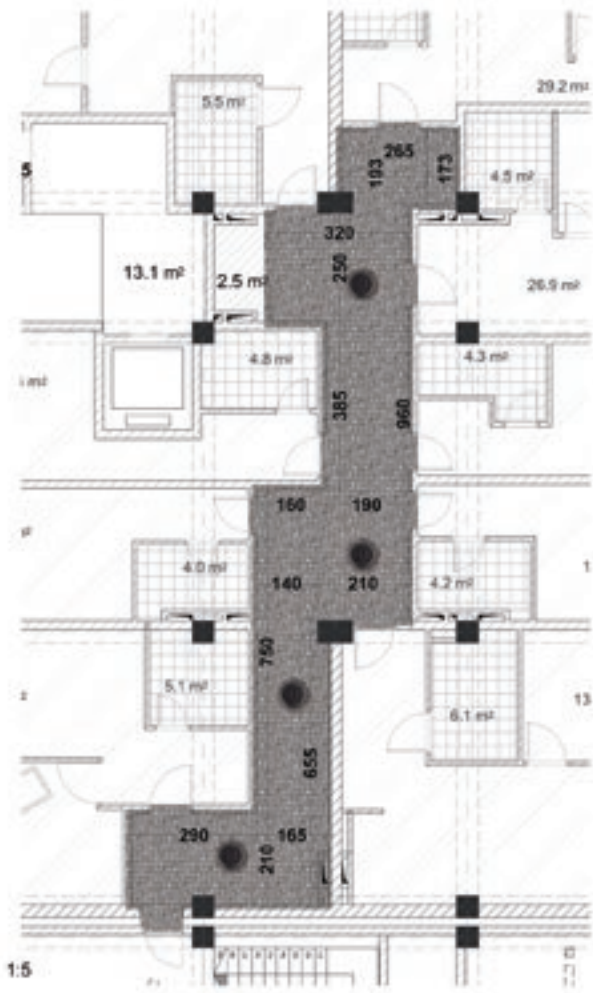
Passend zu der außergewöhnlichen Wandgestaltung wurde ein Streetart-Design aus der Kollektion Pure Elements kombiniert.

To go with the unusual wall design, a street-art design was combined from the Pure Elements collection.

HOTELS

# Kolkhi Biography

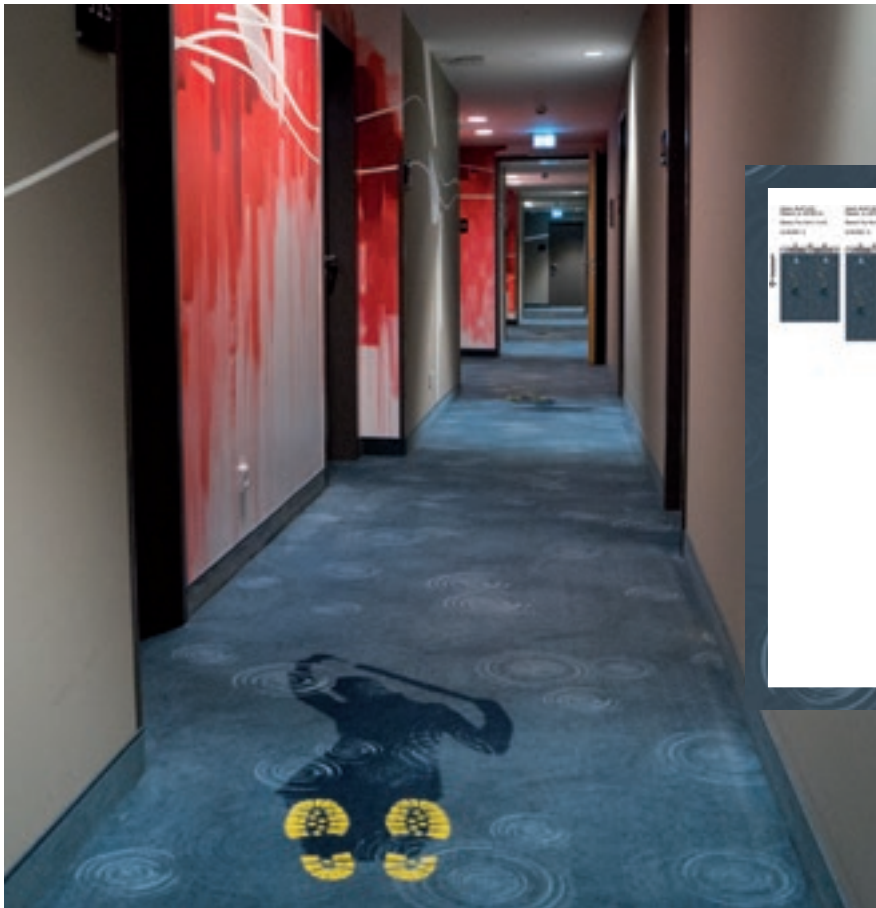
Tbilisi / Georgien



HOTELS

# the niu Welly

Kiel



OBJEKT | PROJECT

the niu Welly

Anlass | Occasion

Neubau | New building

www.theniu.de

TEPPICHBODEN | CARPET

Menge | Quantity

630 m<sup>2</sup> Flure / Corridors  
2880 m<sup>2</sup> Zimmer / rooms

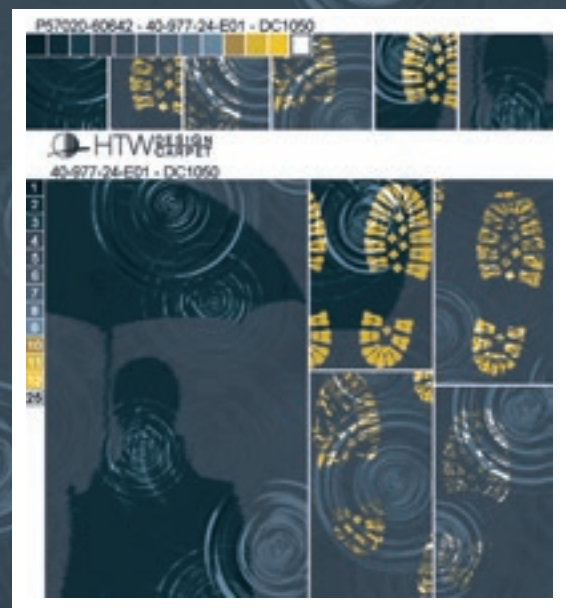
Qualität | Quality

DC 1050 FZ

DESIGNKONZEPT | DESIGN CONCEPT

Kiel steht für Segeln, Meer, Strand und norddeutsches Schietwetter. Der Name Welly heisst übersetzt Gummistiefel und ist in Kiel ein Must-Have!

Kiel is known for sailing, the sea, the beach and the Northern German „Schietwetter“ (meaning „shitty weather“). The name Welly however refers to the British term for rubber boots that are the ultimate must-have in Kiel.





OBJEKT | PROJECT

Hotel Jams

Anlass | Occasion

Renovierung | Renovation

[www.hotel-jams.com](http://www.hotel-jams.com)

TEPPICHBODEN | CARPET

Menge | Quantity

616 m<sup>2</sup>

Qualität | Quality

DC 1050

DESIGNKONZEPT | DESIGN CONCEPT

Individuelles Boutique Hotel für Gäste mit Groove im Blut. Das einzigartige Konzept vereint Hotellerie, Gastronomie, Musik und Design. Die Schwingungen spiegeln sich auch im Teppichdesign wider.

Individual boutique hotel for guests with the groove in their blood. This unique concept brings together hospitality, gastronomy, music and design. The vibrations are also reflected in the carpet design.

HOTELS

# Hotel Jams

München



*Jams*





**OBJEKT | PROJECT**

the niu Leo

**Anlass | Occasion**  
Neubau | New building

[www.theniu.de](http://www.theniu.de)

**TEPPICHBODEN | CARPET**

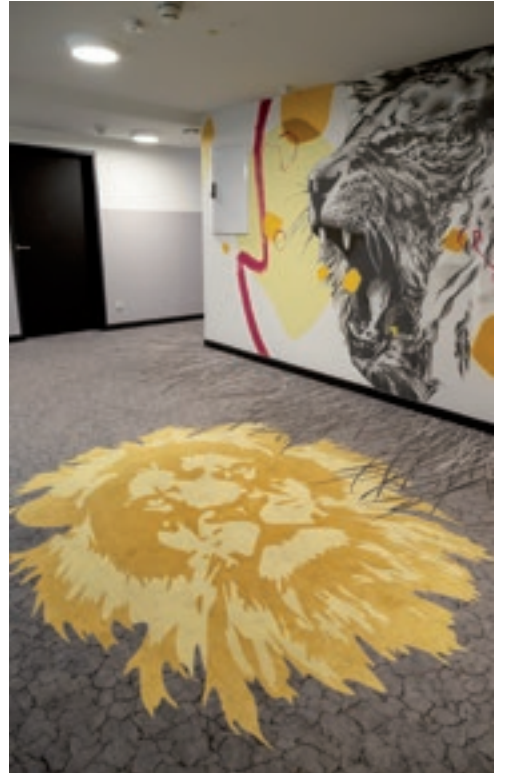
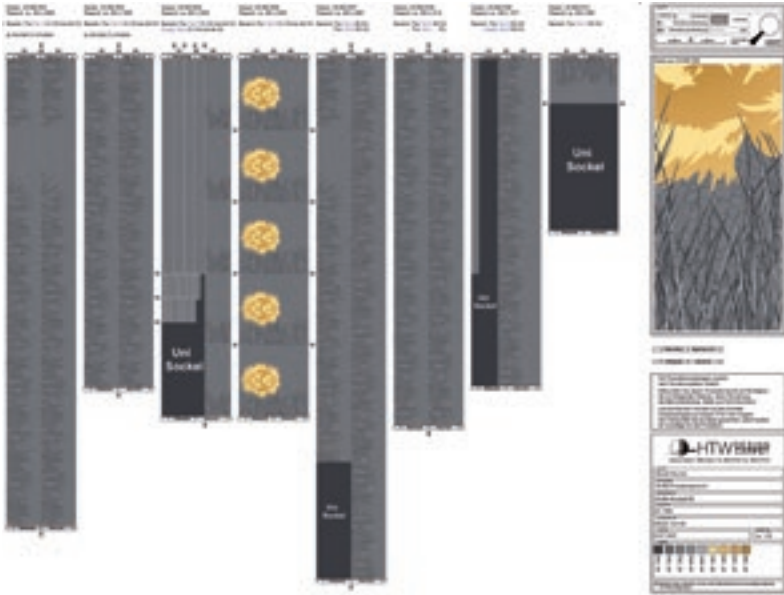
**Menge | Quantity**  
4913 m<sup>2</sup>

**Qualität | Quality**  
DC 1050

**DESIGNKONZEPT | DESIGN CONCEPT**

Der Name Leo (übersetzt: Löwe) steht für einen starken Neuanfang in Nürnbergs aufstrebenden Viertel „Am Leonhardspark“.

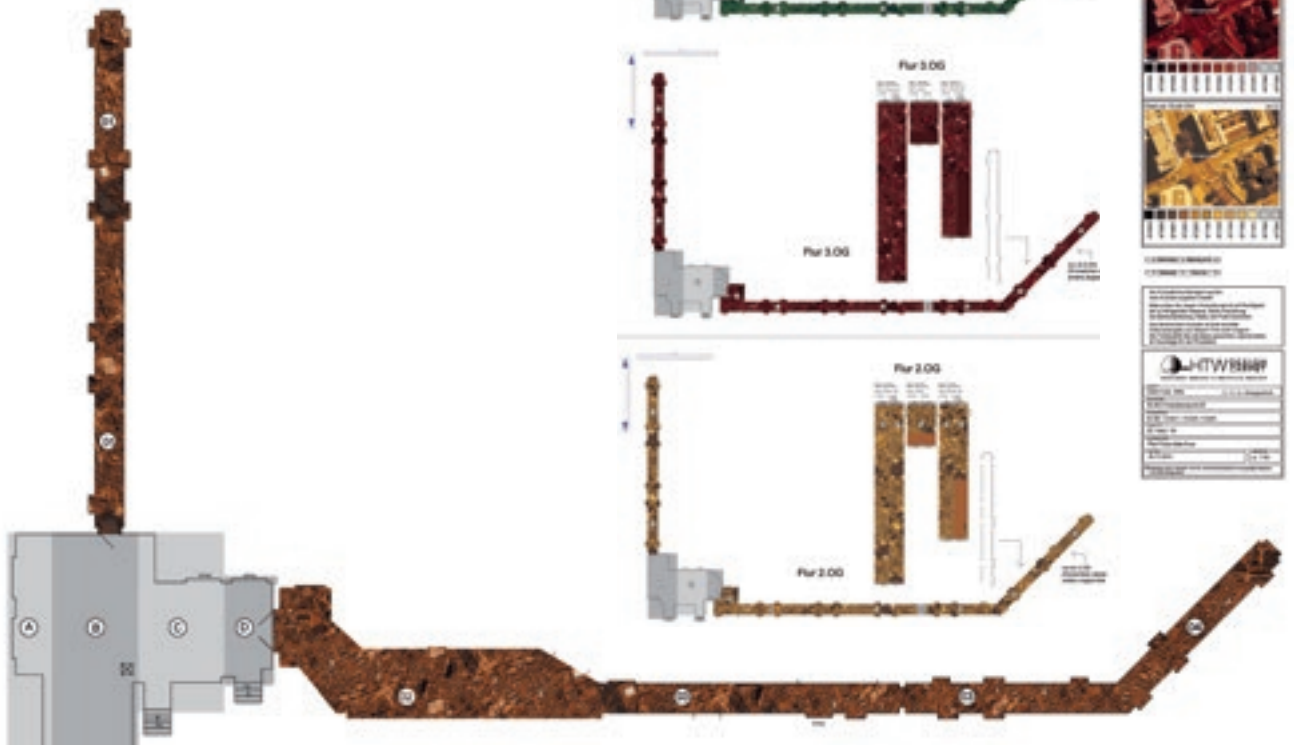
The name Leo (for lion) reminds of the strong new start of Nuremberg's up-and-coming quarter „Am Leonhardspark“.

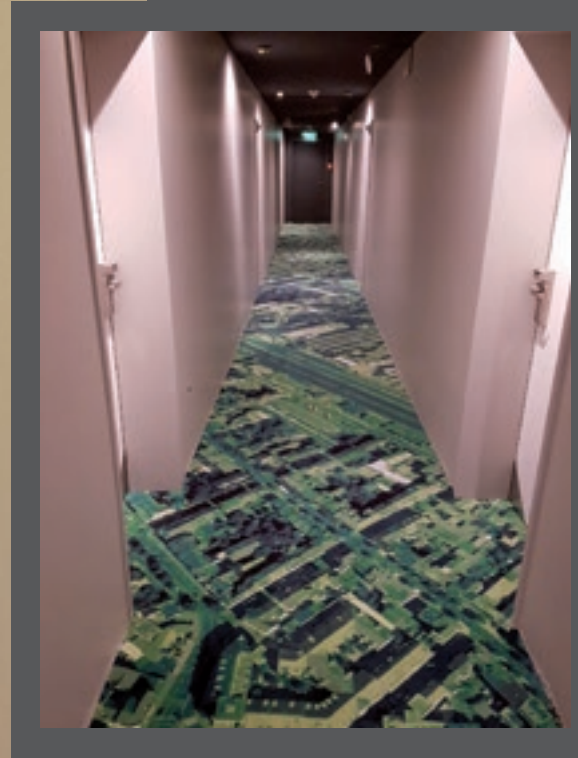


HOTELS

# Hotel Fulda Mitte

Fulda





#### OBJEKT | PROJECT

**Hotel Fulda Mitte**

**Anlass | Occasion**  
Neubau | New building

**Größe | Size**  
130 Zimmer | 130 rooms  
4 Suiten | 4 suites

[www.hotel-fulda-mitte.de](http://www.hotel-fulda-mitte.de)

#### TEPPICHBODEN | CARPET

**Menge | Quantity**  
907 m<sup>2</sup> Flure / Corridors  
512 m<sup>2</sup> Zimmer / rooms

**Qualität | Quality**  
DC 1052 / DC 850

#### DESIGNKONZEPT | DESIGN CONCEPT

Auf Fuldas Wegen zum Zimmer schreiten: die Stadtkarte als Flurteppich. So kommt man schon im Hotel an einigen Sehenswürdigkeiten der Stadt vorbei.

Reaching your room by walking the streets of Fulda: the street map as carpet. This way, visitors get an idea of the town's attractions while still in the hotel.

HOTELS

# the niu Rig

Lübeck

the  
niu





OBJEKT | PROJECT

the niu RIG

Anlass | Occasion

Neubau | New building

[www.theniu.de](http://www.theniu.de)

TEPPICHBODEN | CARPET

Menge | Quantity

1290 m<sup>2</sup>

Qualität | Quality

DC 1050 FZ 550

DESIGNKONZEPT | DESIGN CONCEPT

Der Name Rig (übersetzt: Takelage) bezeichnet die Art, wie ein Segelschiff mit Masten und Segeln bestückt ist.

The name Rig is a term from sailing ships, meaning the way that masts and sails are placed.





HOTELS

# Elite World Sapanca & Butik Hotel

Sapanca, Sakarya / Turkey



OBJEKT | PROJECT

Elite World Sapanca & Butik Hotel

Anlass | Occasion

Renovierung | Renovation, Baujahr 2019



Größe | Size

500 Zimmer | 500 rooms

14 Suiten | 14 suites

[www.eliteworldhotels.com.tr](http://www.eliteworldhotels.com.tr)



TEPPICHBODEN | CARPET

Menge | Quantity

3685 m<sup>2</sup> Flure / Corridors

7247 m<sup>2</sup> öffentliche Bereiche / public areas

Qualität | Quality

AP 1050 Filz 550



DESIGNKONZEPT | DESIGN CONCEPT

Das gehobene Resort ist umgeben von Wald und liegt 2 km vom Sapanca-See entfernt. Die floralen Elemente des Designs spiegeln die Verbundenheit zur großartigen Natur der Umgebung wieder.



This exclusive resort is surrounded by forest and lies only two kilometres from Lake Sapanca. The floral elements of the design mirror the close connection to the magnificent natural setting.



**OBJEKT | PROJECT**

**the niu Mood**

**Anlass | Occasion**  
Neubau | New building

[www.theniu.de](http://www.theniu.de)

**TEPPICHBODEN | CARPET**

**Menge | Quantity**

1570 m<sup>2</sup> Flure / Corridors  
5820 m<sup>2</sup> Zimmer / rooms

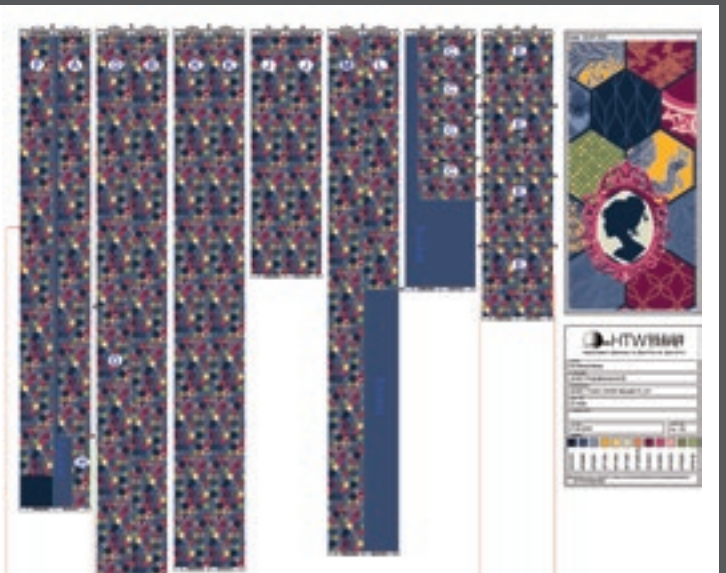
**Qualität | Quality**

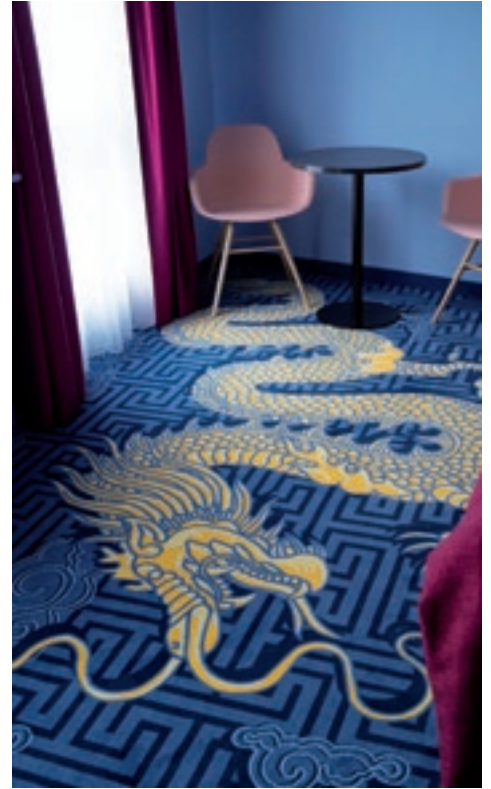
DC 1050 ZR

**DESIGNKONZEPT | DESIGN CONCEPT**

Das the niu Mood zollt mit seinem Namen der beliebten Mainzer Fastnacht Tribut – gute Stimmung und pure, knallbunte Lebensfreude

The niu Mood is named after the happy vibe that you can feel throughout the city during carnival in Mainz - fun and high spirits creating a great mood!



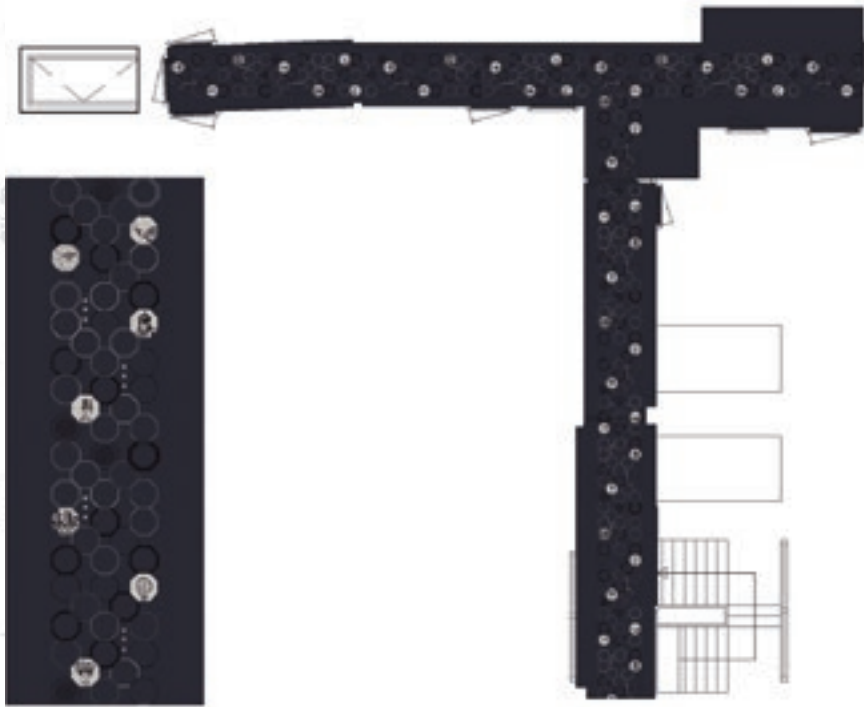


HOTELS

# Die Port van Cleve

Amsterdam

150 YEARS  
DIE PORT VAN CLEVE





OBJEKT | PROJECT

Die Port van Cleve

Anlass | Occasion

Renovierung | Renovation

Größe | Size

122 Zimmer | 122 rooms

[www.dieportvanleve.com](http://www.dieportvanleve.com)

TEPPICHBODEN | CARPET

Menge | Quantity

106 m<sup>2</sup> Flure / Corridors

90 m<sup>2</sup> Zimmer / rooms

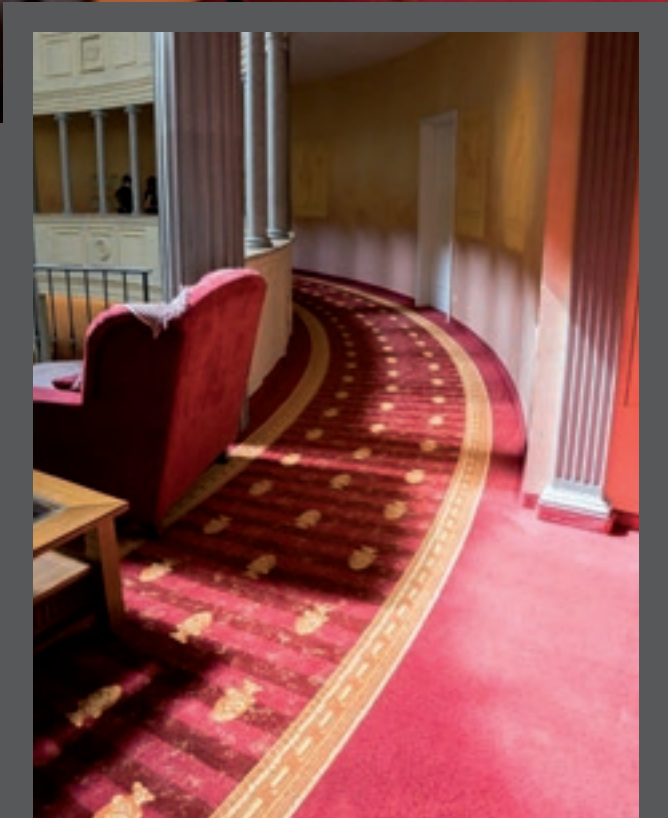
Qualität | Quality

AP 1050 ZR

DESIGNKONZEPT | DESIGN CONCEPT

Ein traditionsreiches Hotel mit Geschichte, bestehend aus drei Gebäuden aus dem 18. Jahrhundert.

A hotel with a long history and rich in tradition, comprising three 18th-century buildings.



OBJEKT | PROJECT

**Bei Schumann**

4-Sterne-Superior, 1 Michelin-Stern

**Anlass | Occasion**

Renovierung | Renovation

[www.bei-schumann.de](http://www.bei-schumann.de)

TEPPICHBODEN | CARPET

**Menge | Quantity**

607 m<sup>2</sup>

**Qualität | Quality**

DC 1252 ZR



DESIGNKONZEPT | DESIGN CONCEPT

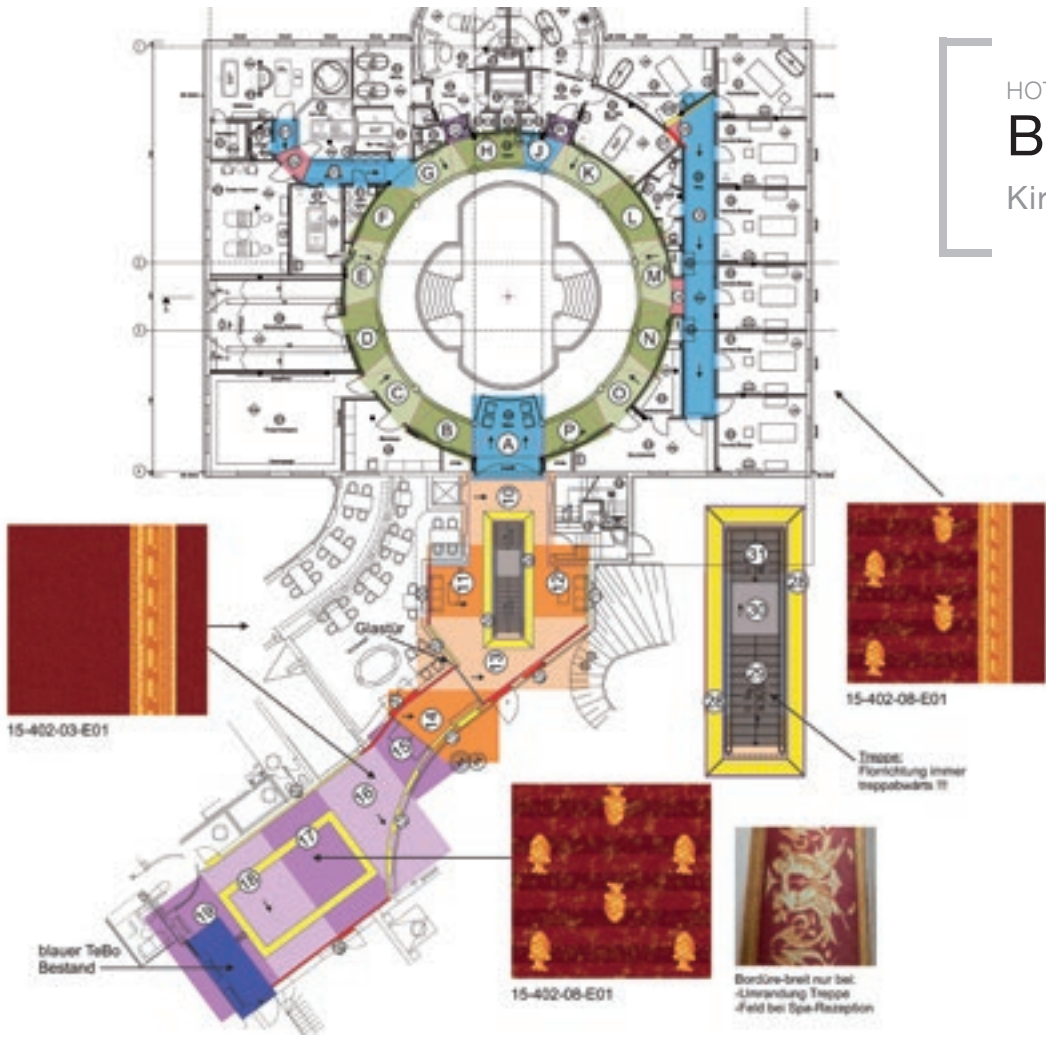
Eines der besten Luxus- und Wellness-Hotels in Sachsen. Ein Ort der Sinne und Sinnlichkeit, inspiriert vom Luxus der antiken römischen Bäder.

One of the finest luxury and wellness hotels in Saxony. A place of sense and sensuality, inspired by the luxury of ancient Roman baths.

HOTELS

# Bei Schumann

Kirschau



**SCHUMANN**  
SINNLICH BERÜHRT.

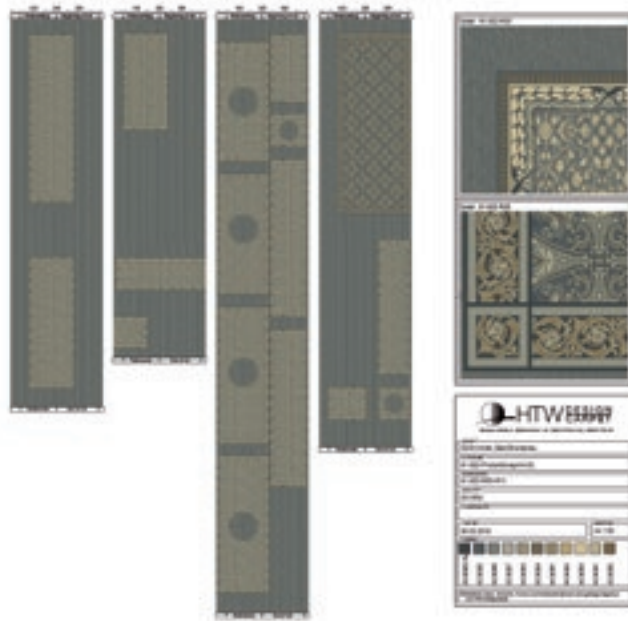


HOTELS

**DORINT**

Bad Brückenau

**Dorint**



OBJEKT | PROJECT

**Dorint Bad Brückenau**

4-Sterne-Superior-Hotel

**Anlass | Occasion**

Renovierung | Renovation

**Größe | Size**

116 Zimmer | 116 rooms

[www.hotel-bad-brueckenau.dorint.com/de/](http://www.hotel-bad-brueckenau.dorint.com/de/)

TEPPICHBODEN | CARPET

**Menge | Quantity**

2073 m<sup>2</sup>

**Qualität | Quality**

DC 1052

DESIGNKONZEPT | DESIGN CONCEPT

Die klassisch-eleganten Designs aus den Kollektionen Bel Etage und Seasons Comfort unterstreichen das historische Bauwerk inmitten blühender Parkanlagen.

The elegant classical designs from the Bel Etage and Seasons Comfort collections highlight this historic building surrounded by blossoming parkland.





OBJEKT | PROJECT

the niu Loco

Anlass | Occasion

Neubau | New building

[www.theniu.de](http://www.theniu.de)

TEPPICHBODEN | CARPET

Menge | Quantity

1056 m<sup>2</sup>

Qualität | Quality

DC 1050



DESIGNKONZEPT | DESIGN CONCEPT

Der Name Loco ist eine Hommage an das ehemalige Eisenwerk Hirschau, welches vor 175 Jahren weltbekannte Lokomotiven produzierte.

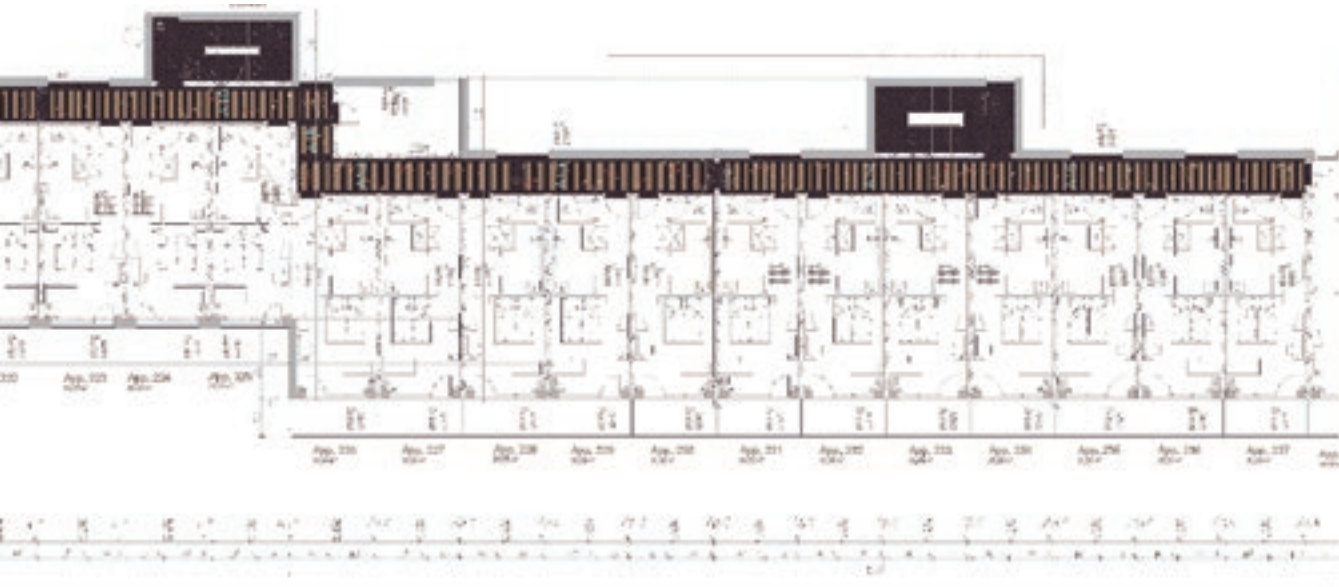
The name Loco is a reminder of the former iron works in Hirschau, where world-famous locomotives were built some 175 years ago.



HOTELS

# Hotel Weitblick

Marktoberdorf



DAS \*\*\*\*  
**WEITBLICK**  
*Allgäu*



## OBJEKT | PROJECT

Hotel Weitblick

[www.weitblick-allgaeu.de](http://www.weitblick-allgaeu.de)

## TEPPICHBODEN | CARPET

Menge | Quantity

1563 m<sup>2</sup>

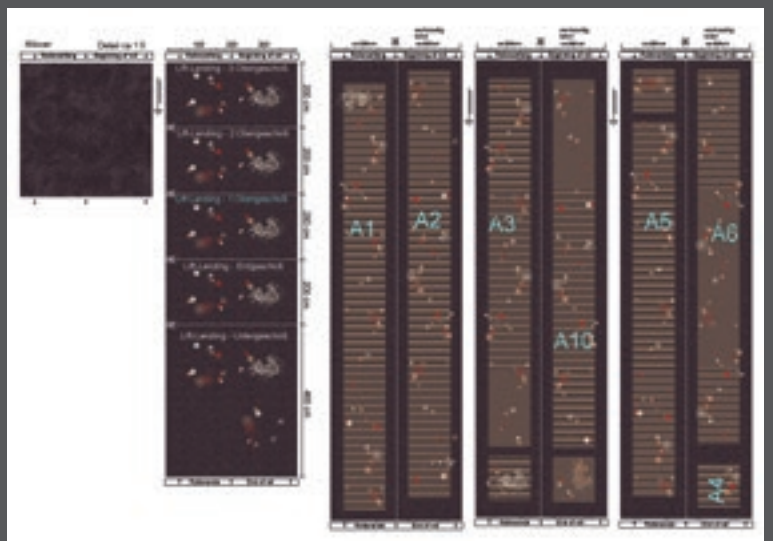
Qualität | Quality

DC 1050

## DESIGNKONZEPT | DESIGN CONCEPT

Der Design-Fokus liegt hier auf der Schönheit und Vielfalt: Stilvoll, aber nicht abgehoben. Authentisch, aber nicht aufgesetzt.

Here the design focus is on beauty and variety – stylish, but not aloof. Authentic, not contrived.



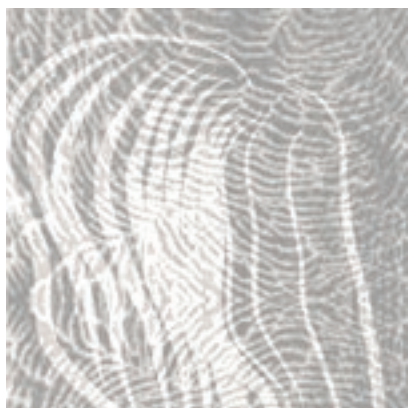
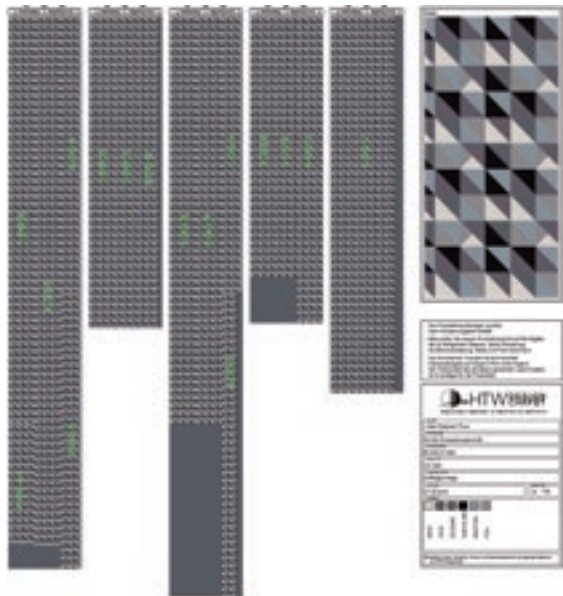
HOTELS

# Hotel Elephant Weimar

Weimar



HOTEL  
**ELEPHANT**  
WEIMAR





#### OBJEKT | PROJECT

Hotel Elephant

#### Anlass | Occasion

Renovierung | Renovation

#### Größe | Size

99 Zimmer | 99 rooms

#### TEPPICHBODEN | CARPET

#### Menge | Quantity

475 m<sup>2</sup> Flure / Corridors  
2750 m<sup>2</sup> Zimmer / rooms

#### Qualität | Quality

DC 850 FZ / DC 1252 FZ

[www.hotelelephantweimar.de](http://www.hotelelephantweimar.de)

#### DESIGNKONZEPT | DESIGN CONCEPT

Die grafische Gestaltung des Korridor-Teppichbodens erinnert an die Designsprache der Bauhaus-Textil-Werkstatt in Weimar (später Dessau). Sie war eine der erfolgreichsten und produktivsten Werkstätten am Bauhaus.

The graphical design of the corridor carpet is reminiscent of the design language of the Bauhaus textile workshop in Weimar (later in Dessau). This was one of the Bauhaus movement's most successful and productive workshops.



HOTELS

# Sonnenhof

Lam, Bayerischer Wald



OBJEKT | PROJECT

**Hotel Sonnenhof**  
4-Sterne-Superior

Größe | Size

166 Zimmer | 166 rooms  
17 Suiten | 17 suites

[www.sonnenhof-lam.de](http://www.sonnenhof-lam.de)

TEPPICHBODEN | CARPET

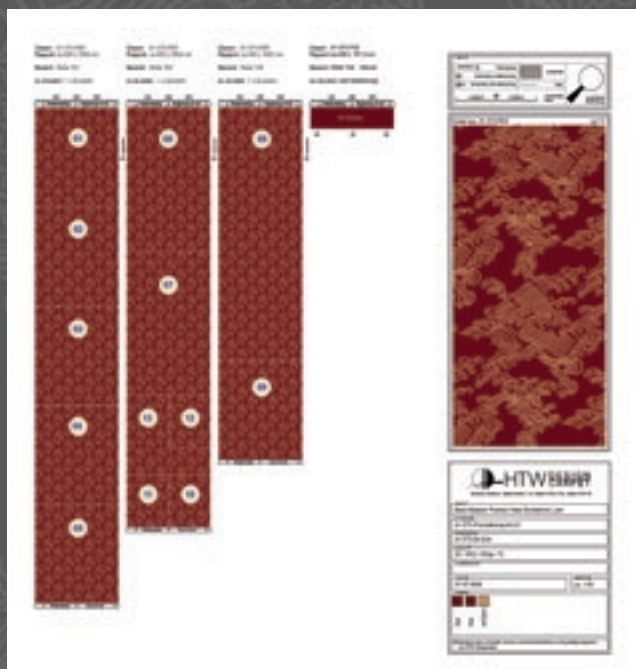
Menge | Quantity  
262 m<sup>2</sup>

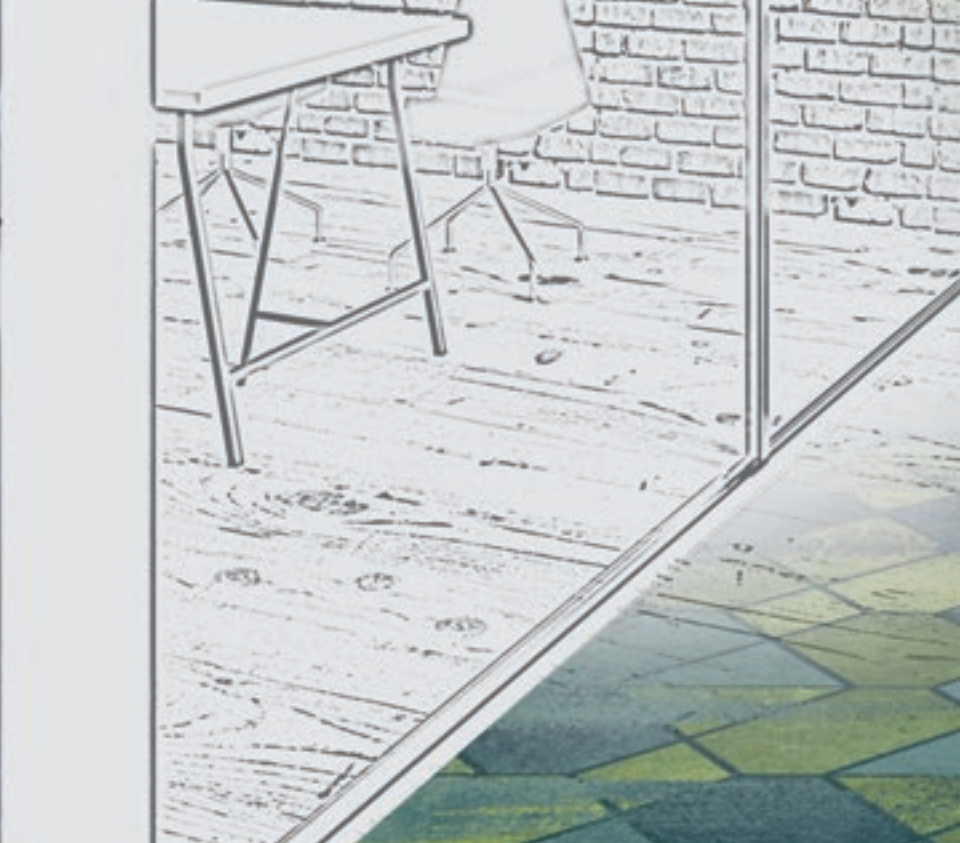
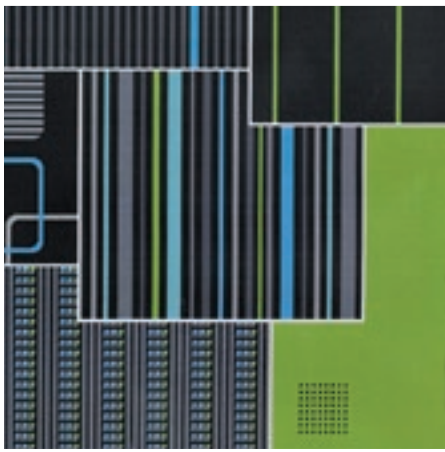
Qualität | Quality  
DC 1052

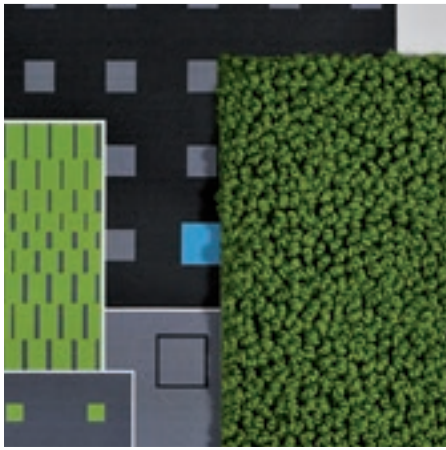
DESIGNKONZEPT | DESIGN CONCEPT

Das chinesische Wellenmuster des Teppichbodens weist auf das in deutschen Hotels noch recht seltene Angebot der ganzheitlichen Gesundheitsbehandlung durch die traditionelle chinesische Medizin hin.

The Chinese wave pattern of the carpet hints at the holistic health treatment on offer, based on traditional Chinese medicine – something still very rare in German hotels.







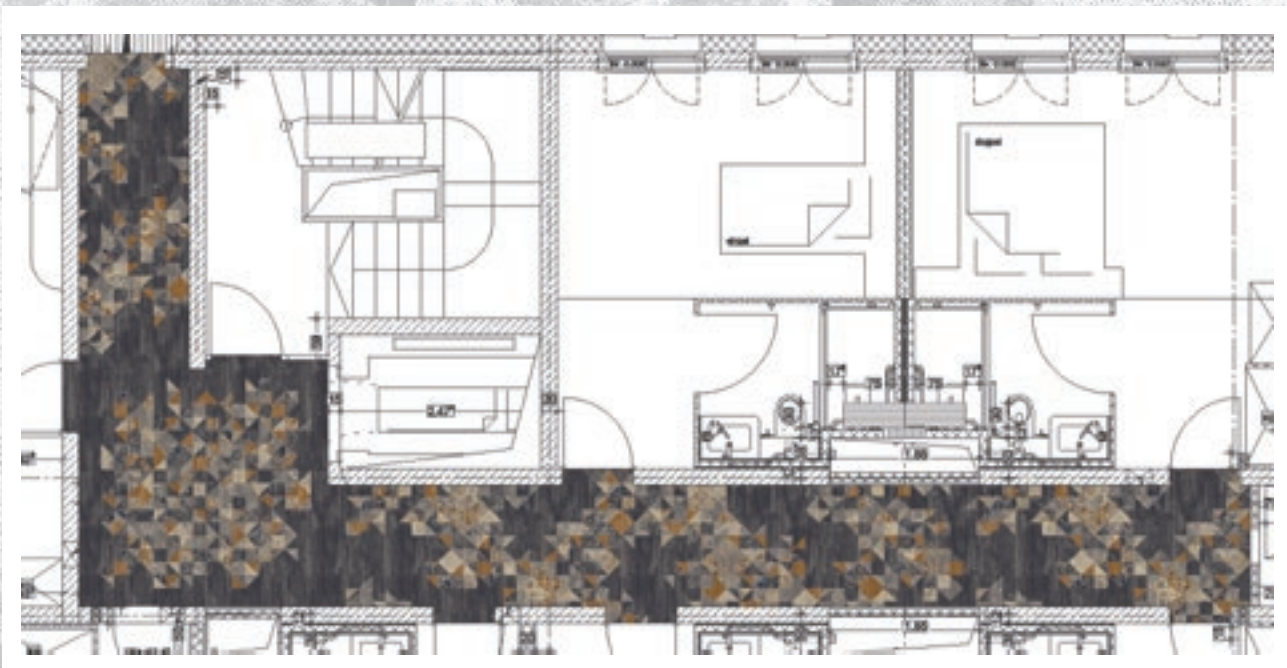
# 24 CONCEPTS



**16501-A01**

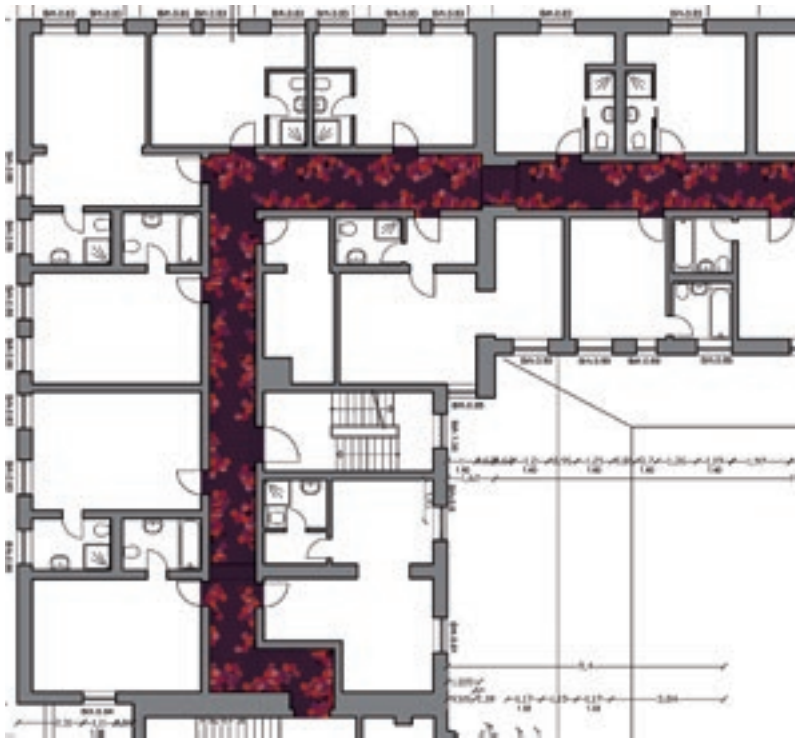
KF 7056	KF 8072	KF 8071	KF 8063	KF 8061	KF 8060
KF 1059	KF 8055	KF 8059	KF 9053	KF 5098	KF 5059

CONCEPT 1









CONCEPT

# 2



16502-A01












				
KF 3068	KF 4066	KF 4058	KF 4076	KF 4070
				
KF 4077	KF 3072	KF 2070	KF 2072	KF 4051

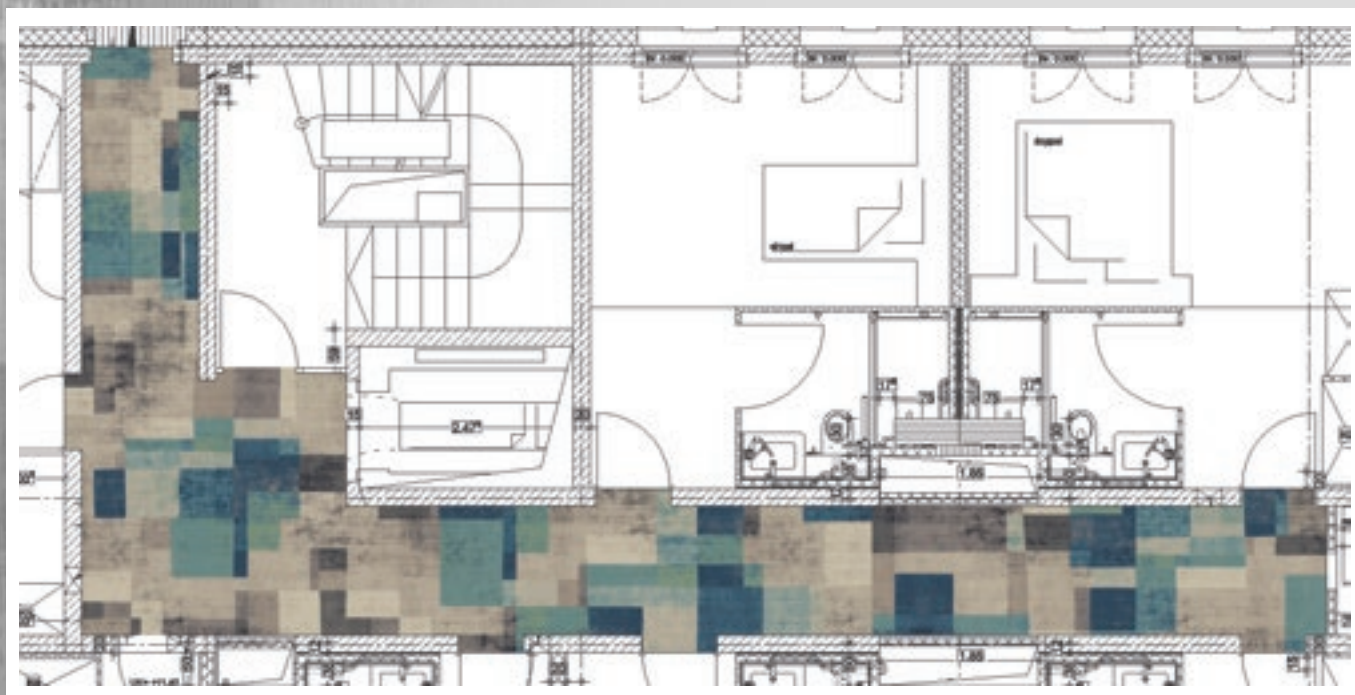


CONCEPT  
3



16503-A01

					
KF 8061	KF 8063	KF 8064	KF 8071	KF 8072	KF 7056
					
KF 6058	KF 6104	KF 6052	KF 5074	KF 5076	



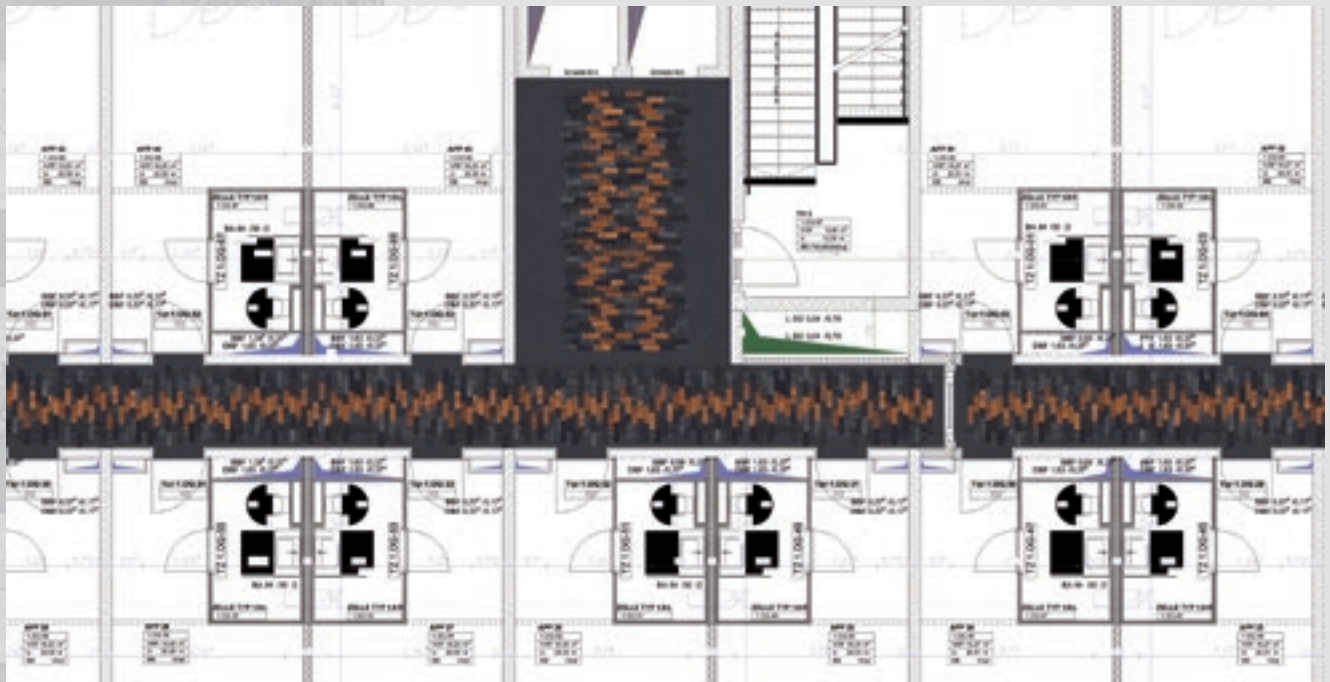




CONCEPT 4

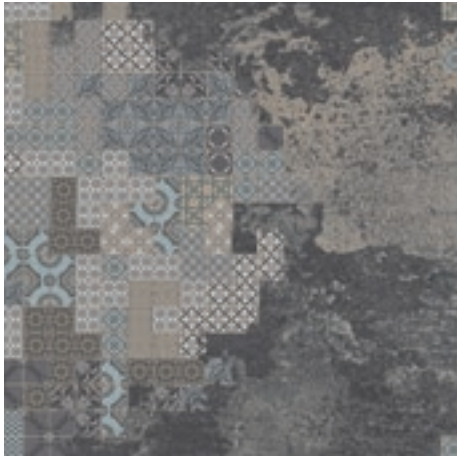
16504-A01

KF 8070	KF 8068	KF 2068	KF 2063	KF 2062	KF 2053
KF 9060	KF 7056	KF 7055	KF 9063	KF 7053	KF 9062















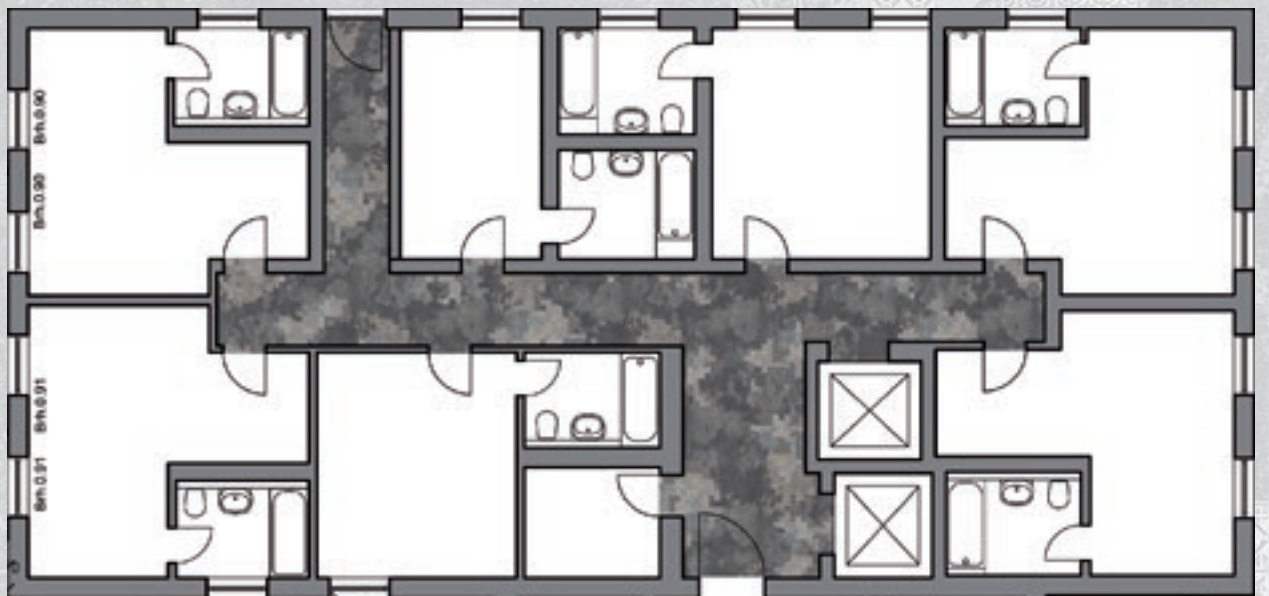




**16505-A01**

					
KF 9901	KF 9902	KF 9911	KF 9903	KF 9904	KF 9909
					
KF 7058	KF 6057	KF 6050	KF 8071	KF 8064	KF 8063

















CONCEPT 5





CONCEPT **6**

**16506-A01**

							
KF 9060	KF 9915	KF 9913	KF 9918	KF 9924	KF 9061	KF 1906	KF 1908
							
KF 3068	KF 3915	KF 3082	KF 3081	KF 3907	KF 3908	KF 3910	KF 8060





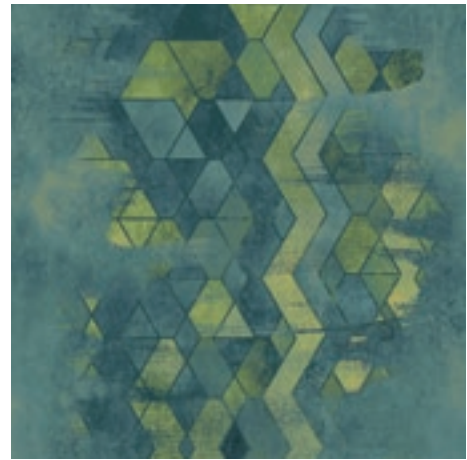


CONCEPT 7













16507-A01





**16508-A01**

				
KF 6908	KF 6070	KF 6056	KF 6114	KF 6052
				
KF 6063	KF 6108	KF 6104	KF 6102	KF 6100

CONCEPT  
8







CONCEPT 9

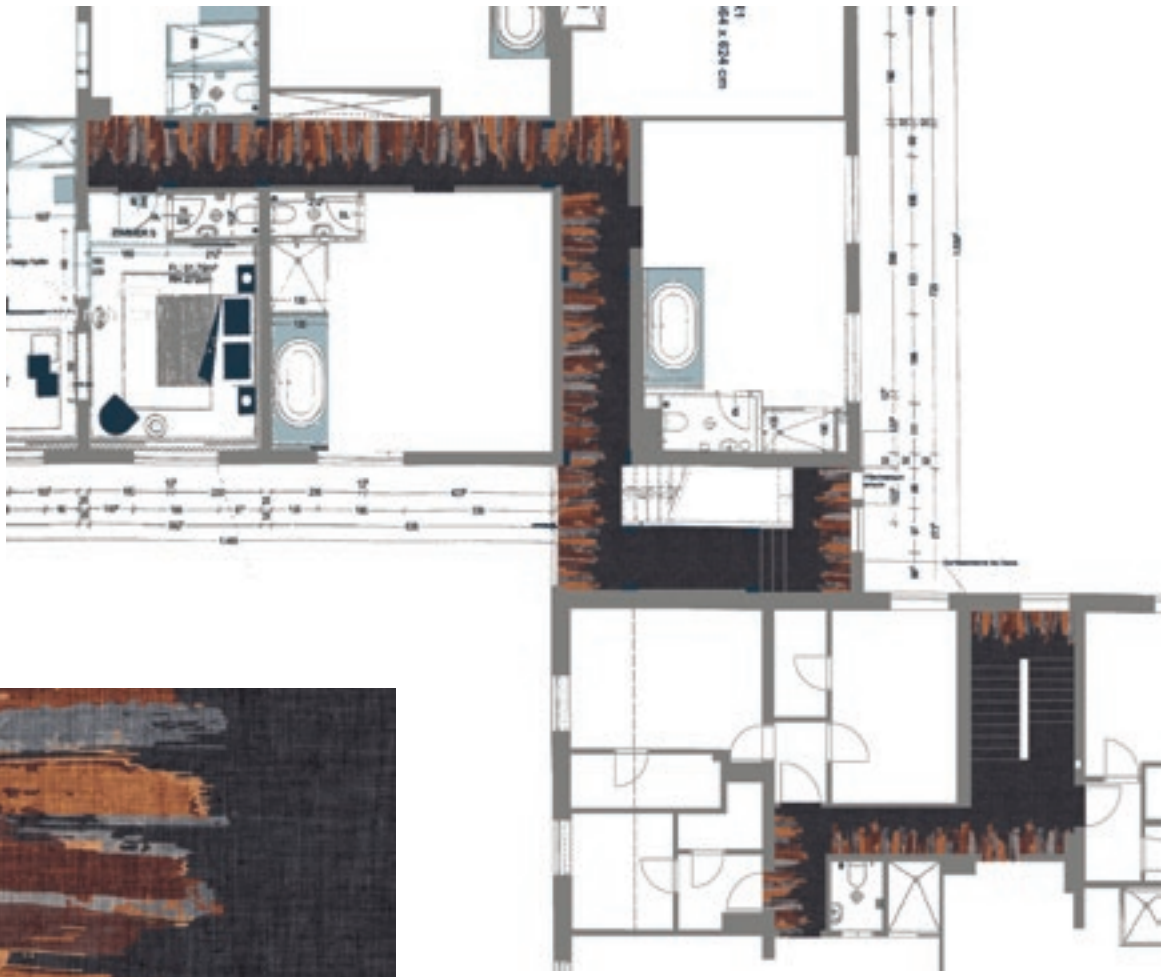


16509-A01

KF 9060	KF 7056	KF 7055	KF 8072	KF 8076	KF 8056
KF 8051	KF 8062	KF 8061	KF 7052	KF 9062	KF 9061

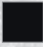









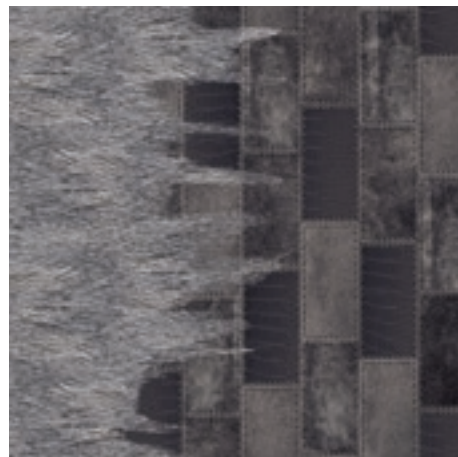
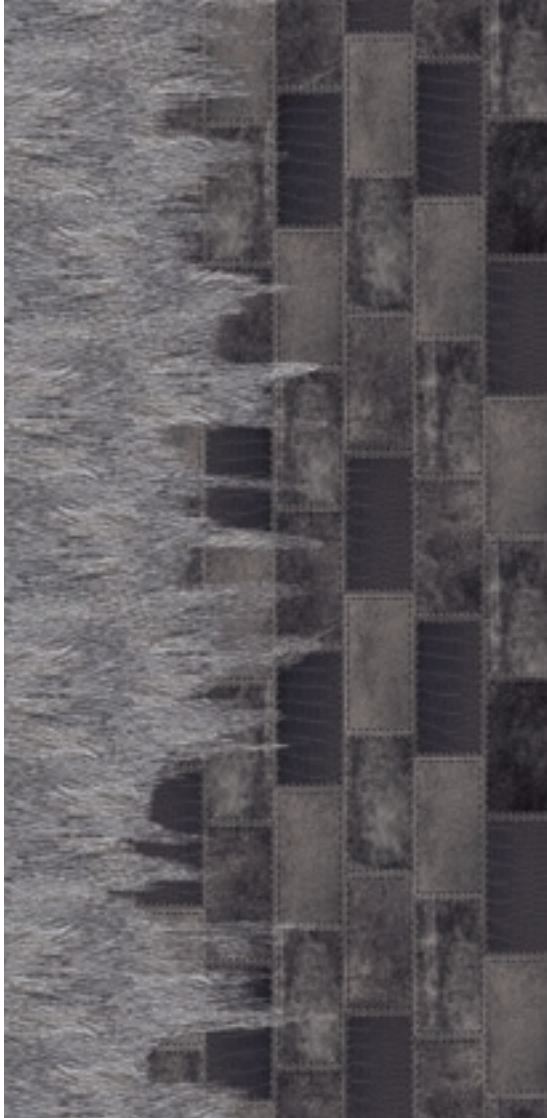


CONCEPT 10













16510-A01

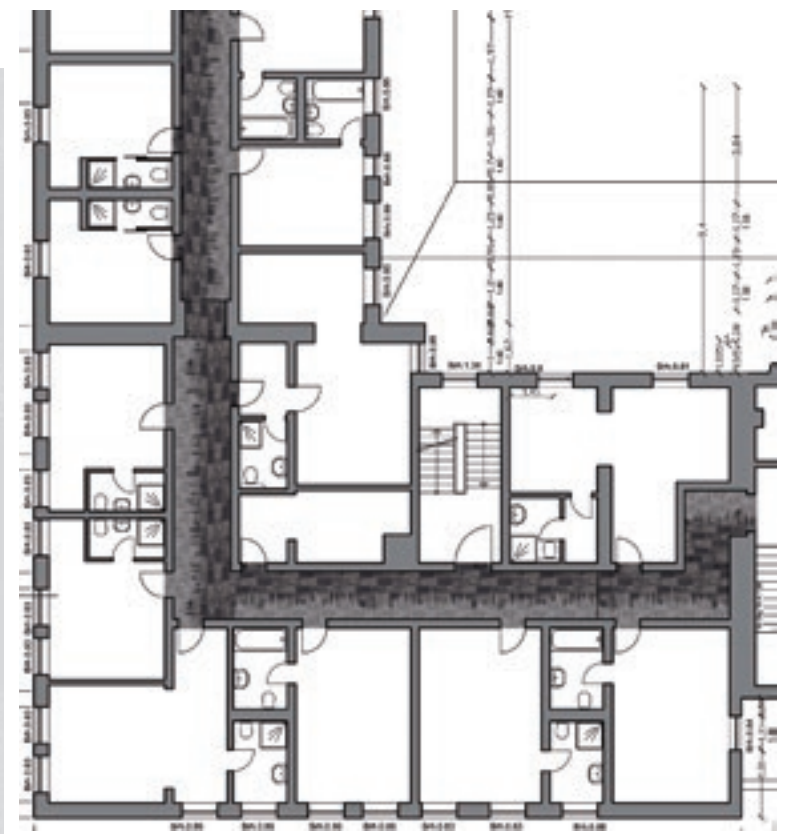
					
KF 9060	KF 7056	KF 9063	KF 7053	KF 9062	KF 9061
					
KF 8080	KF 1058	KF 2053	KF 2061	KF 3058	KF 3064





**16511-A01**

					
KF 9058	KF 7056	KF 9063	KF 7053	KF 7052	KF 7051
					
KF 9061	KF 8060	KF 8061	KF 8071	KF 8072	KF 8073














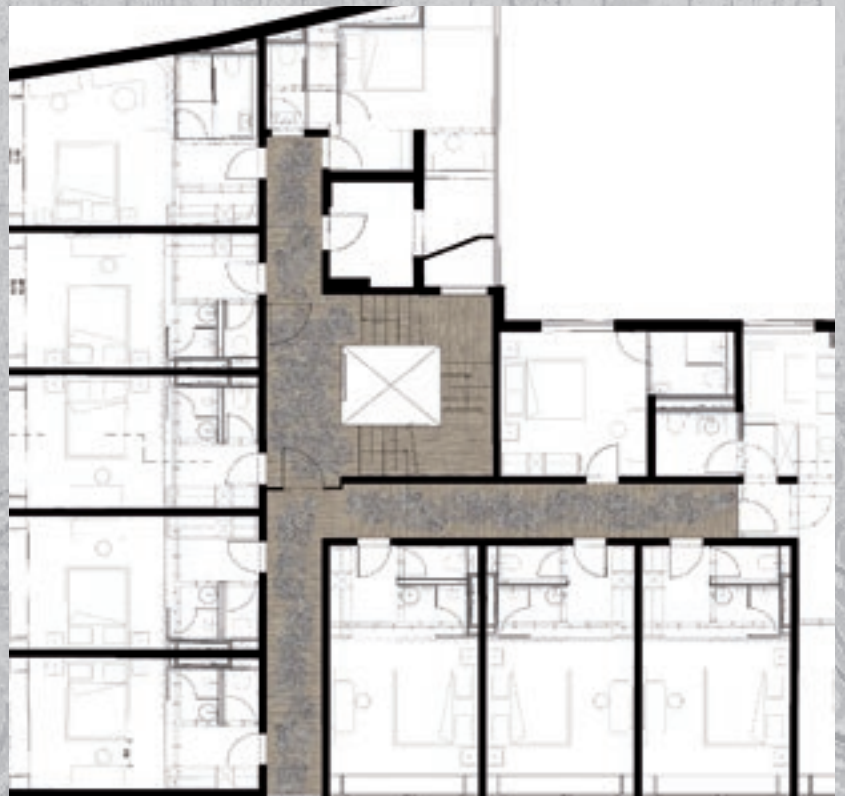


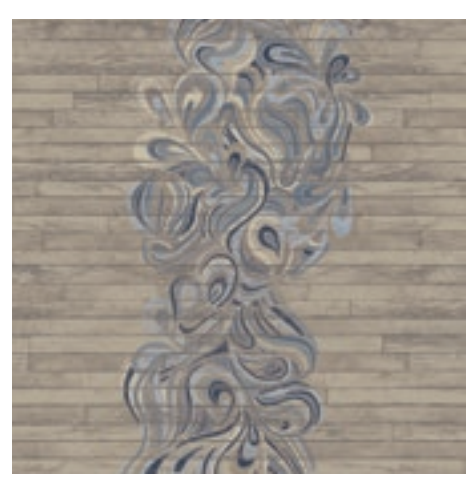


# CONCEPT 121

## 16512-A01

					
KF 8072	KF 8071	KF 8064	KF 8063	KF 8061	
					
KF 5058	KF 9054	KF 9053	KF 9052	KF 9062	KF 9061












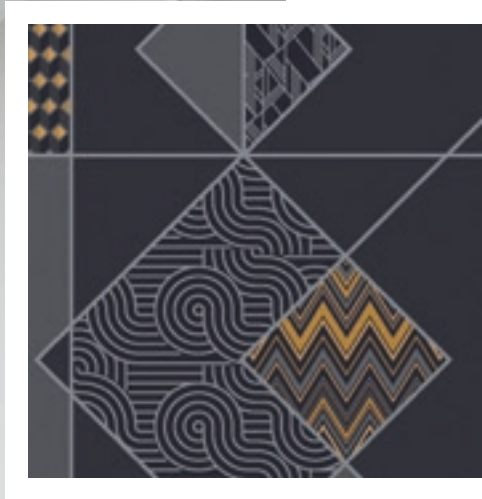
CONCEPT **13**



**16513-A01**

- |   |   |   |   |   |
|---|---|---|---|---|
|  |  |  |  |  |
| KF<br>7056  | KF<br>7055  | KF<br>9063  | KF<br>7053  | KF<br>9062  |
|  |  |   |   |   |
| KF<br>1060  | KF<br>1058  |   |   |   |

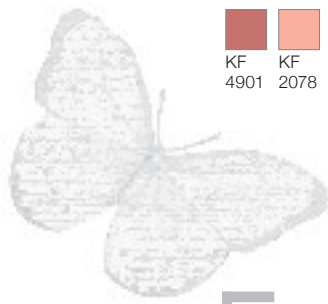




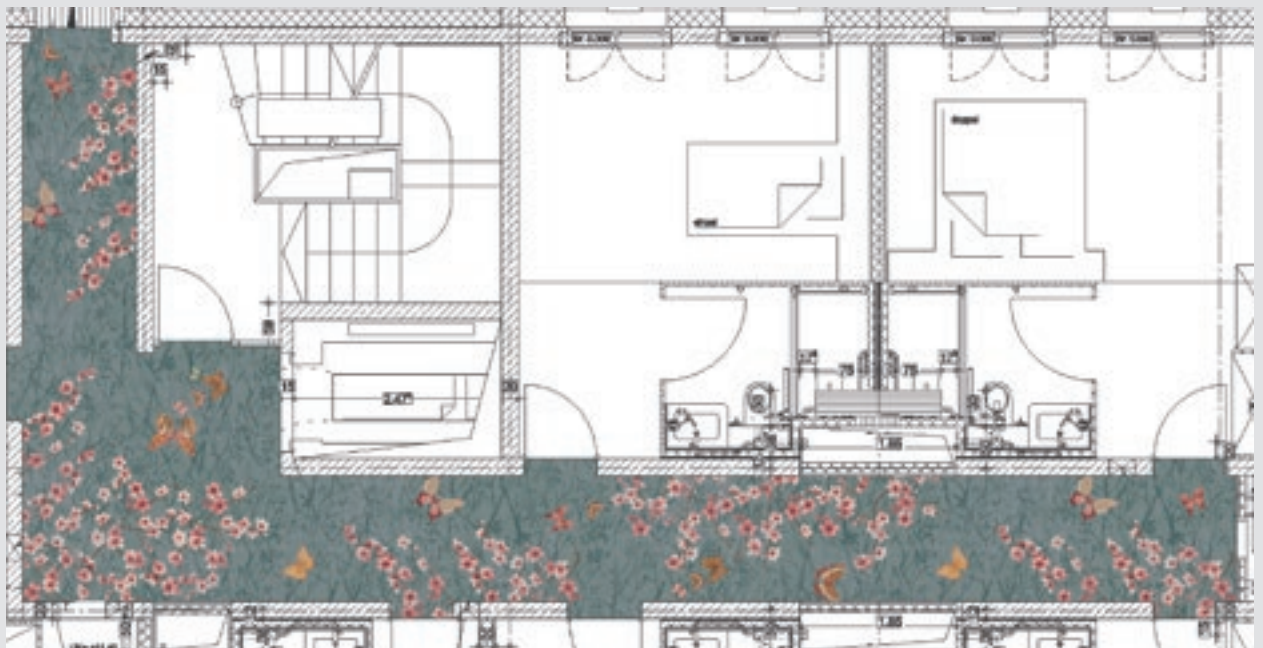


**16514-A01**

KF 6905	KF 6901	KF 6902	KF 8916	KF 8057	KF 8054	KF 4904	KF 4902
KF 4901	KF 2078	KF 3911	KF 8060	KF 2064	KF 2053	KF 1058	KF 6931



CONCEPT 14







# CONCEPT 15]



**16515-A01**

KF 9060	KF 8073	KF 8068	KF 8078	KF 8079	KF 8064	KF 8063	KF 8050
KF 3061	KF 3060	KF 3051	KF 2061	KF 2074	KF 5067	KF 5060	KF 5057

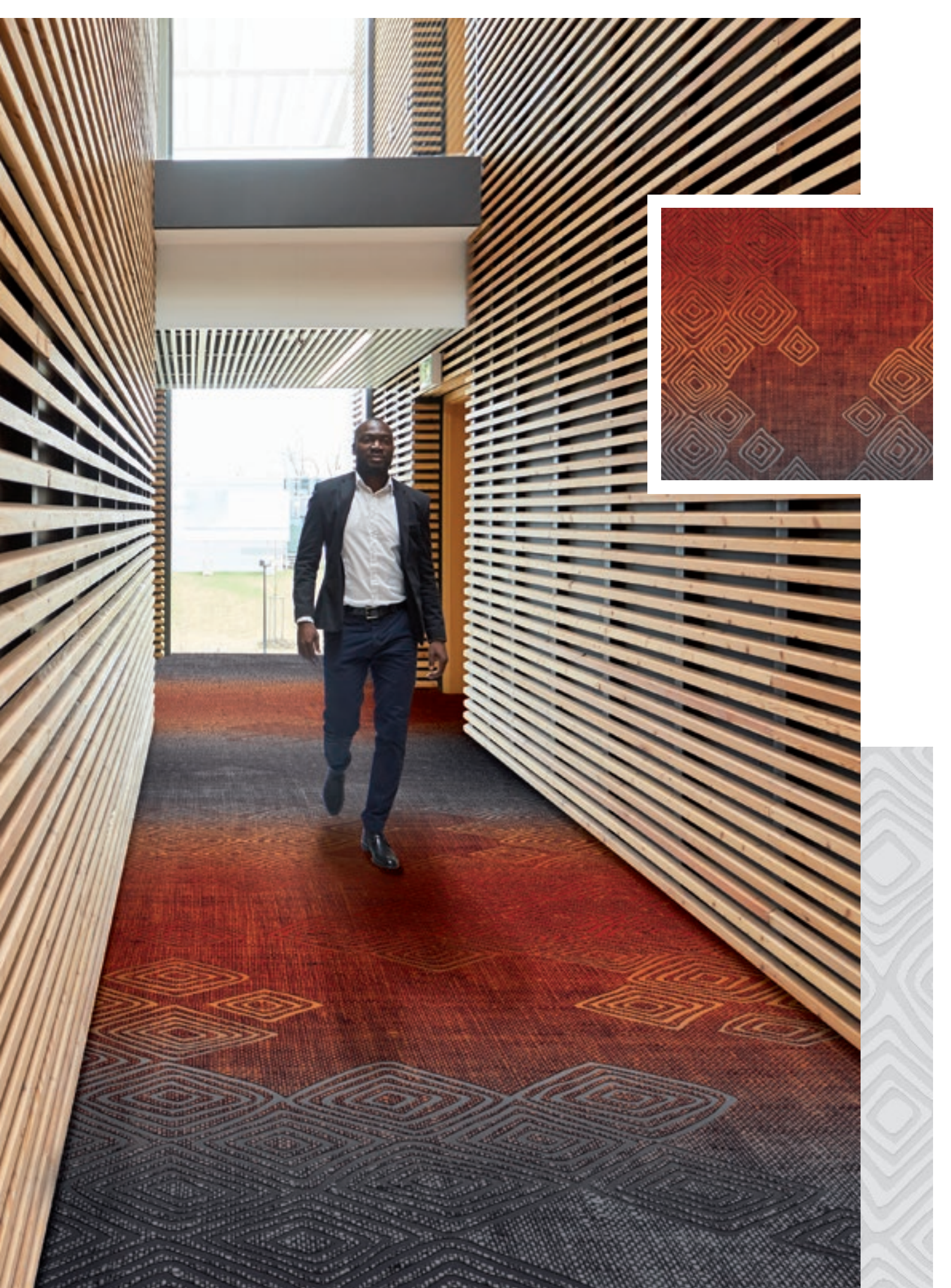


CONCEPT **16**

**16516-A01**












				
KF 9060	KF 7056	KF 7055	KF 7053	KF 9062
				
KF 3083	KF 3082	KF 3081	KF 2057	KF 2056





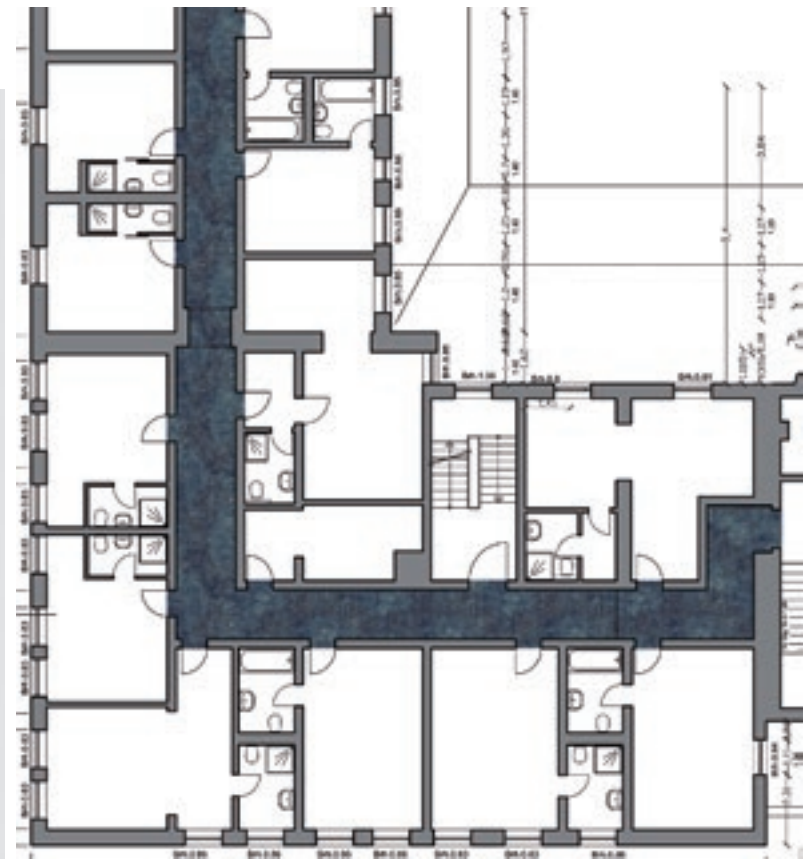


**16517-A01**

					
KF	KF	KF	KF	KF	KF
9060	9902	9904	8901	8910	6081
					
KF	KF	KF	KF	KF	
5066	5058	7058	6901	6902	

CONCEPT

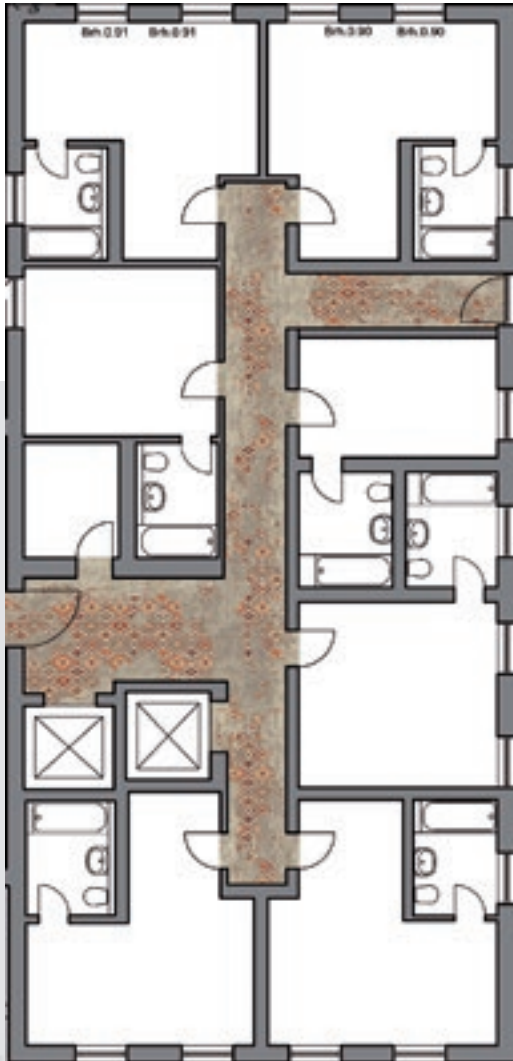
# 17







# CONCEPT 18

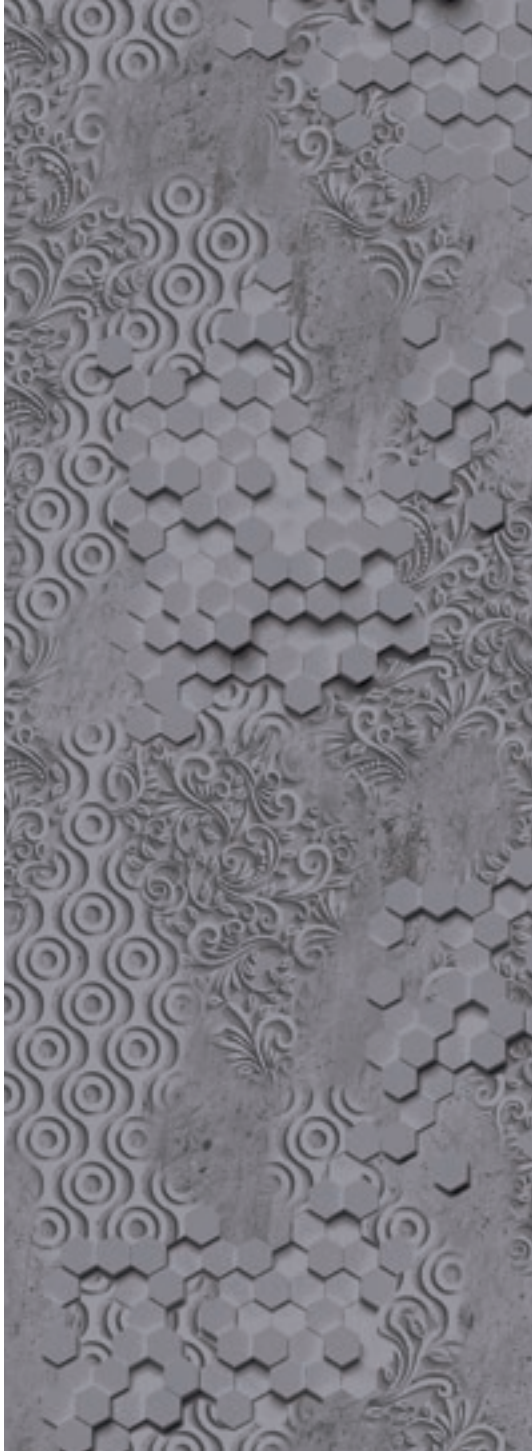


**16518-A01**

KF 1068	KF 8061	KF 8063	KF 8064	KF 8071	KF 8066
KF 3055	KF 2070	KF 2056			

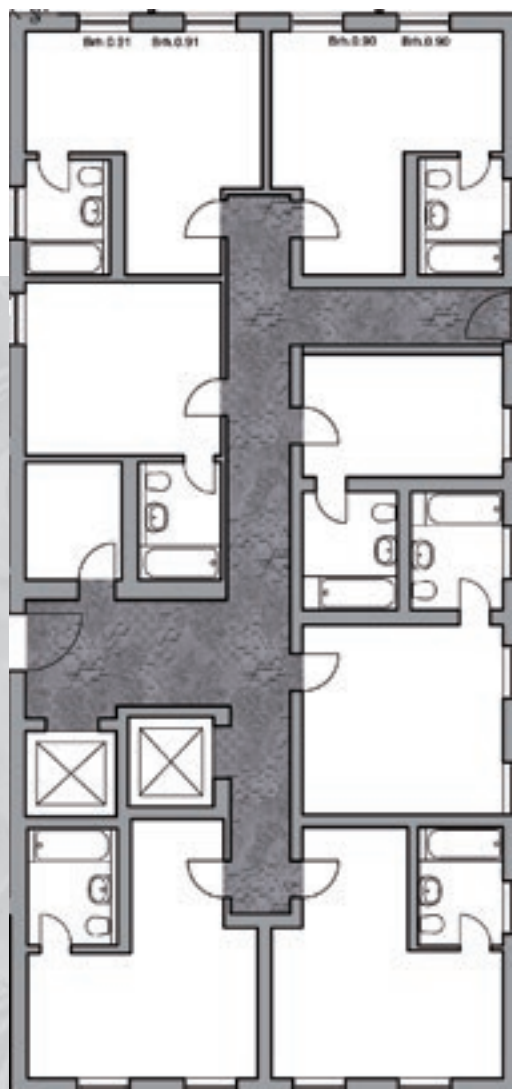
CONCEPT

# 19

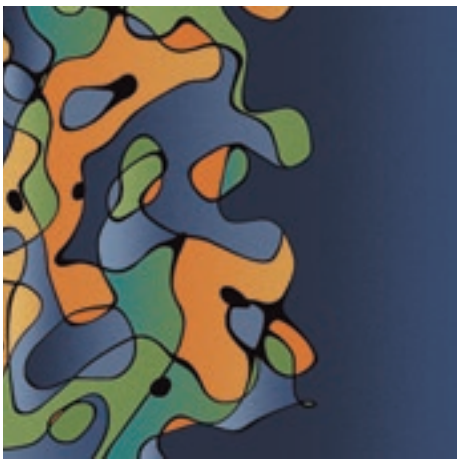


**16519-A01**

			
KF 9060	KF 9915	KF 9914	KF 9913
			
KF 9918	KF 9912	KF 9924	KF 9925







**16520-A01**



KF 9060   KF 5059   KF 5056   KF 5054   KF 5051

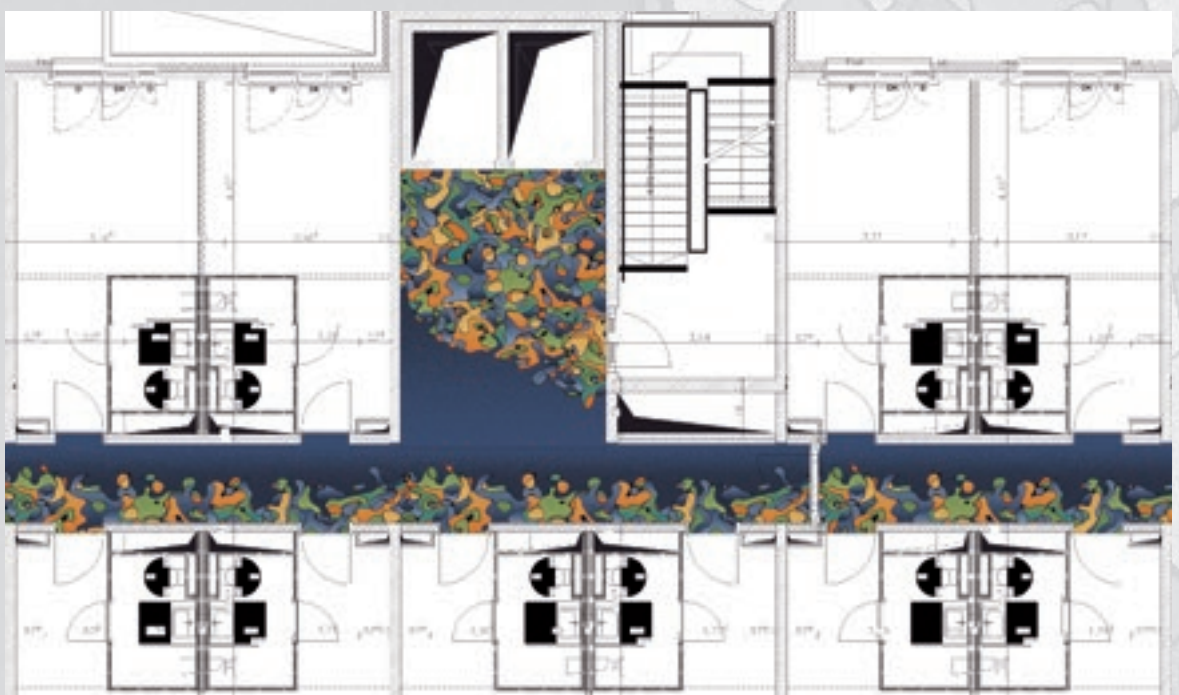


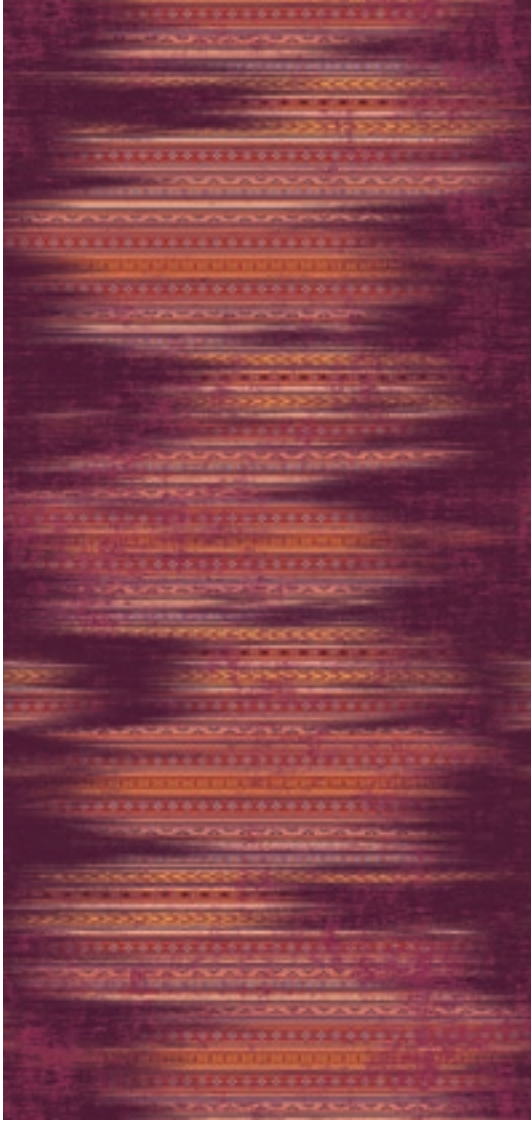
KF 6054   KF 6108   KF 6102   KF 2072   KF 1058   KF 1056





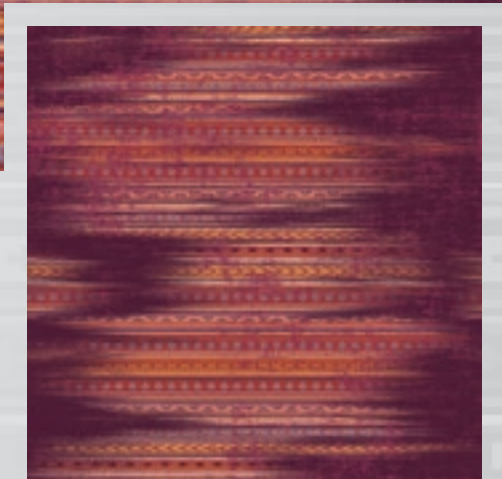
# CONCEPT 201





CONCEPT

# 21















**16521-A01**

KF 4058	KF 4922	KF 4901	KF 4941
KF 2910	KF 2052	KF 2072	KF 3053



16522-A01

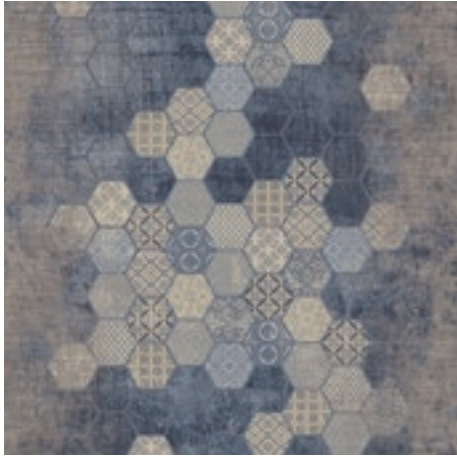
					
KF 9901	KF 8072	KF 8071	KF 8064	KF 8063	KF 8061
					
KF 3059	KF 3052	KF 2060	KF 5076	KF 5073	KF 5052

CONCEPT 22



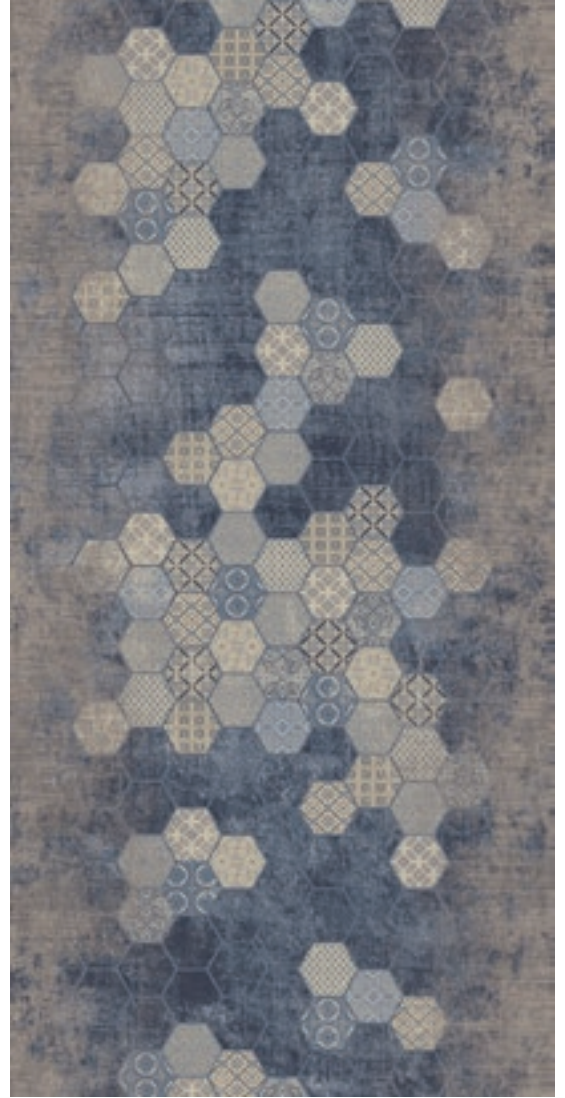






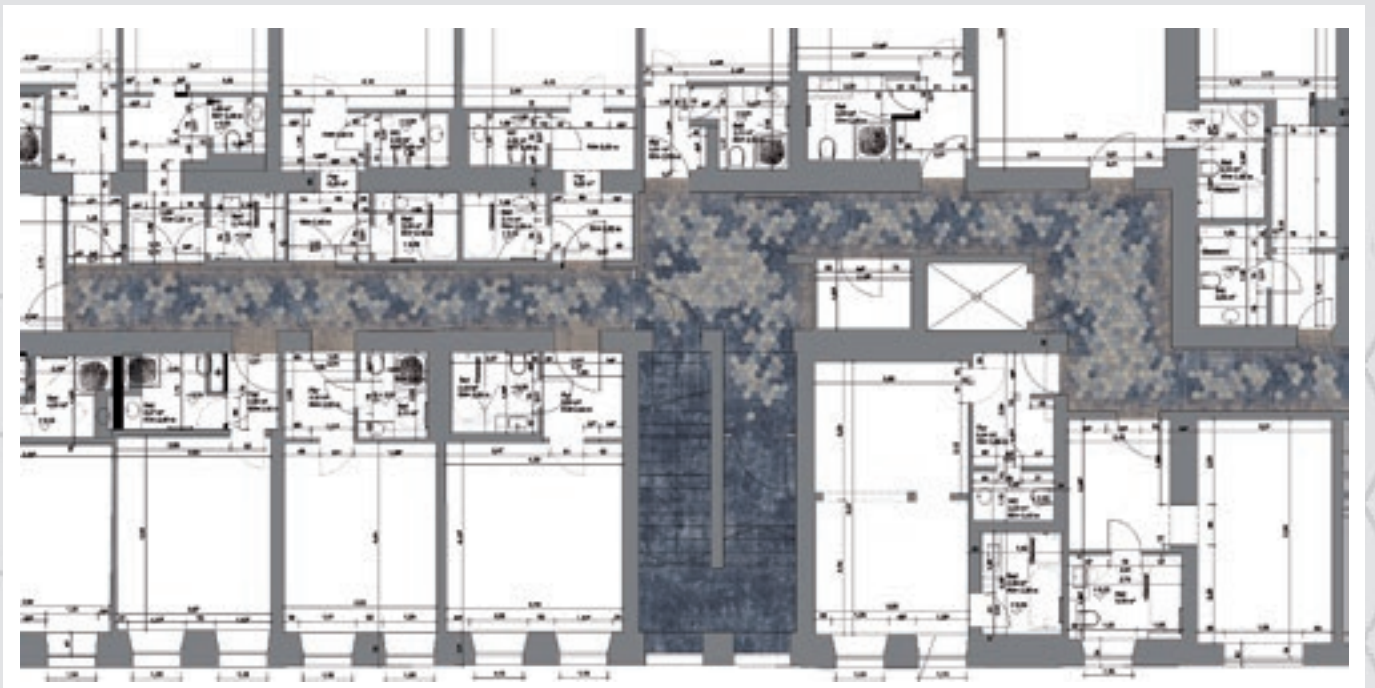
16523-A01

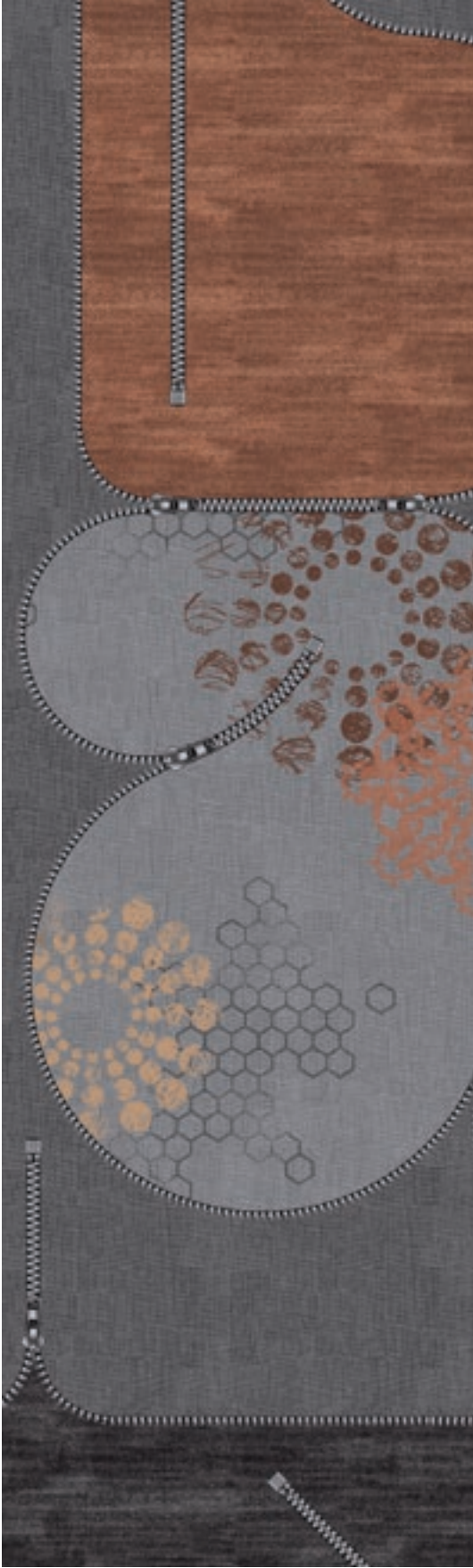
KF 8072	KF 8071	KF 8064	KF 8063	KF 8061
KF 9055	KF 9054	KF 9053	KF 9062	KF 9061



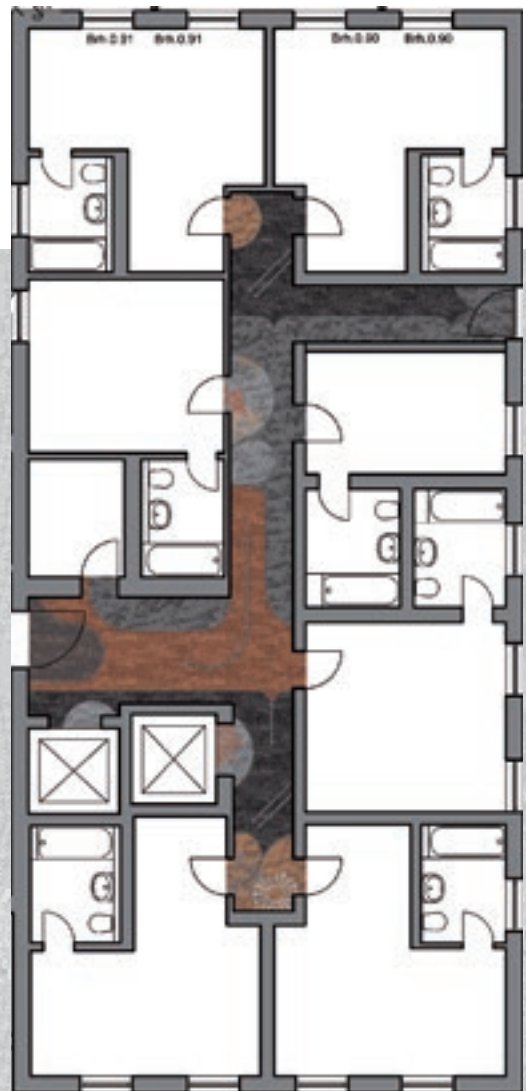
CONCEPT

# 23



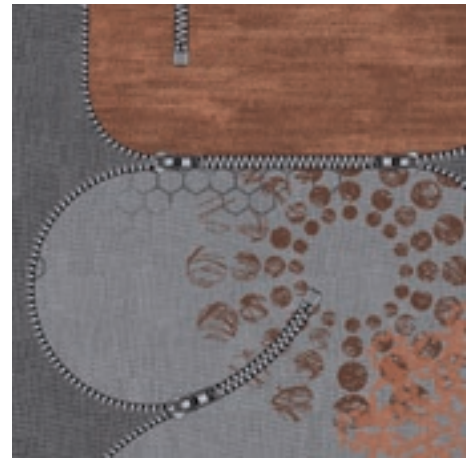


CONCEPT 24



16524-A01

KF 9060	KF 9914	KF 9913	KF 9912	KF 7052	KF 9062
KF 9061	KF 9051	KF 8927	KF 2061	KF 8056	KF 8051



# CARPET DESIGN GUIDE



Halbmond Teppichwerke GmbH  
Brückenstraße 1  
D-08606 Oelsnitz, Germany  
Tel.: +49 37421-42-0  
Fax: +49 37421-42-571  
info@halbmond.de  
www.halbmond.de



HTW DESIGN CARPET  
Mindener Str. 6  
D-32049 Herford  
Tel.: +49 5221-1779-0  
Fax: +49 5221-1779-79  
info@htw-designcarpet.de  
www.htw-designcarpet.de

