

This website will disappear soon. Visit our new corporate website at www.associated-weavers.com for the latest information and updates.

Don't forget to update your bookmarks!

MANHATTAN 29

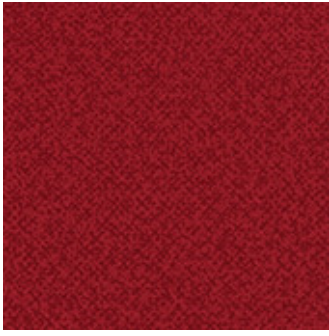


Product properties

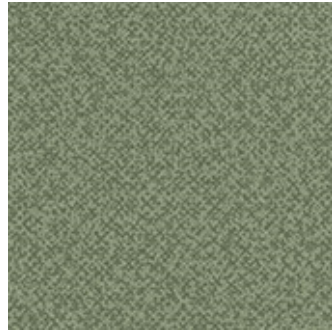
Widths (m)	4.00	Backing	Flextex Plus Actionbac
Texture	Saxony	Pile composition	100% Polyamide (Nylon)
Aspect	Structured/dessin	Pattern repeating every L*W (cm)	95 X 100 CM
Domestic Use (* if stairs symbol is present)	intensive : bedroom, guest room, living, dining, hobby, office, study, entrance, hallway and stairs *	Commercial Use	General: Hotel room, Hotel suite, Boutique, Shop, Restaurant, Conference room, Office, Stairs
Pile height (mm)	7.5	Total thickness (mm)	8.5
Budget	-		



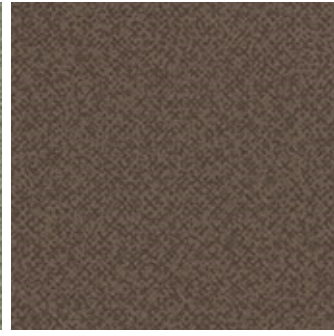
Available colors



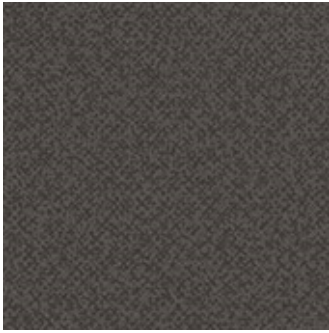
MANHATTAN 19



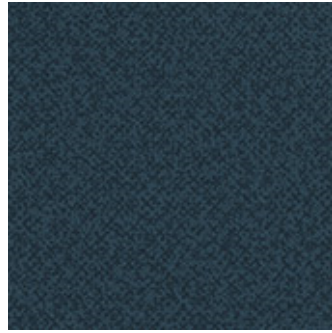
MANHATTAN 29



MANHATTAN 40



MANHATTAN 49



MANHATTAN 79



MANHATTAN 99

AWE -IZ "Klein Frankrijk", Weverijstraat 1 - 9600 Ronse Belgium - Tel + 32 55 23 02 11 -

www.carpetyourlife.com

The Associated Weavers Company reserves the right to modify the characteristics of products while keeping the same technical properties. We strongly recommend the use of darker colours for heavy traffic areas. - This document may contain typographical errors. The product images used are a general guide and, in reality, the colours may deviate slightly due to limitations of the printing process used.