



Q STEP





Q STEP

COLLECTION

de Um mit anderen Tanzpaaren konkurrieren zu können, muss ein guter Tänzer den Quickstep sicher beherrschen. Er gilt als der fröhlichste und lebendigste unter den Turniertänzen: der Charakter des Quickstep spiegelt sich in schnellen, kontrollierten und fließenden Bewegungen wider.

Dieser Tanz ist eine eigenwillige Mischung aus dynamischen Schritten, einem schnellen Tempo und fortlaufenden Wechseln. Mit ihren nahezu schwebenden Schritten, mit ihrer überströmenden Lust am Leben und ihrer Flexibilität in Knien und Füßen, bewegen sich Quickstep-Turniertänzer wie prickelnde Champagnerbläschen.

- 900g/m² Markenpolyamid für höchsten Anspruch
- Produziert mit modernster Chromojet-Technologie
- 36 Designs aller Art
- 6 Farboptionen pro Design
- Unkomplizierte Auswahl
- Einfach zu bestellen
- Kurze Lieferzeiten
- Wettbewerbsfähige Preise

en A good dancer must certainly master the quickstep to be able to compete with other dancing couples. It can be regarded as the brightest and liveliest of the ballroom dances: the dance characteristics of the quickstep express themselves in rapid, controlled and flowing movements.

This dance has a capricious mixture of dynamic steps, a fast tempo and continuous changes. With their almost floating lightness of step, their overflowing zest for life and the flexibility of their knees and feet, tournament quickstep dancers move like swirling champagne bubbles!

- 900 g/m² of branded polyamide for high contract performance
- produced with the latest Chromojet-technology
- 36 designs of all kinds
- 6 colour options per design
- straightforward selection
- easy to order
- short delivery time
- competitive price

fr Un bon danseur doit sans aucun doute maîtriser le quickstep s'il veut avoir une chance de rivaliser avec les autres couples de danse. Certains le considèrent comme la danse de salles de bal la plus virevoltante et vivante qui soit : le quickstep se caractérise par des mouvements rapides, contrôlés et fluides.

Cette danse est un capricieux mélange de pas dynamiques, d'un tempo rapide et de changements continus. Avec leurs pas d'une légèreté quasi flottante, leur joie de vivre débordante et la flexibilité de leurs genoux et de leurs pieds, les danseurs de tournois de quickstep se déplacent comme des bulles de champagne tourbillonnantes !

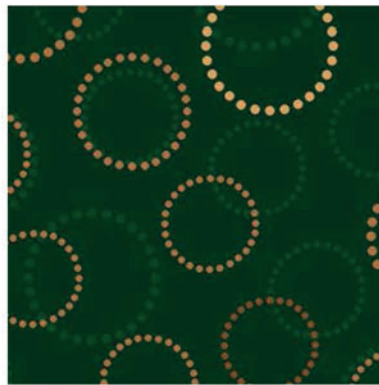
- 900g/m² de polyamide de marque pour des performances de grande qualité
- conçu avec la dernière technologie Chromojet
- 36 modèles de toutes sortes
- 6 options de couleur par modèle
- sélection simple
- facile à commander
- temps de livraison courts
- tarif compétitif



Repeat appr.: 133x77cm



11 12 13 18 19 Q01-1



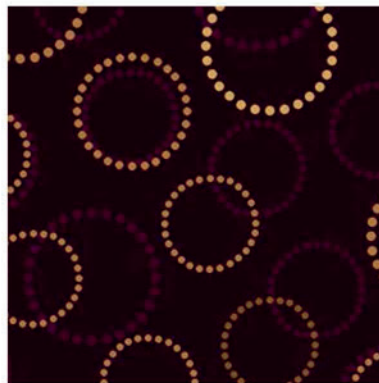
01 02 11 12 13 Q01-2



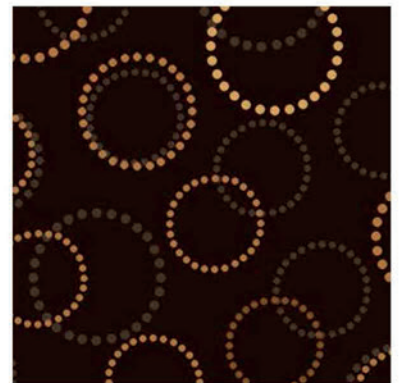
05 06 10 11 12 Q01-3



10 11 12 13 14 Q01-4



11 12 13 15 16 Q01-5



11 12 13 21 22 Q01-6

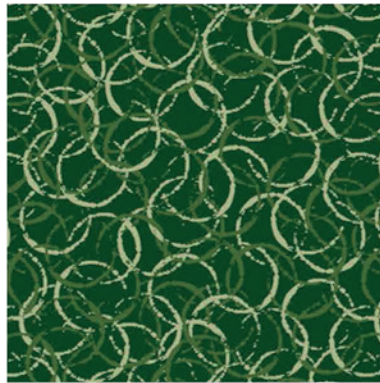


Repeat appr.: 57x56cm



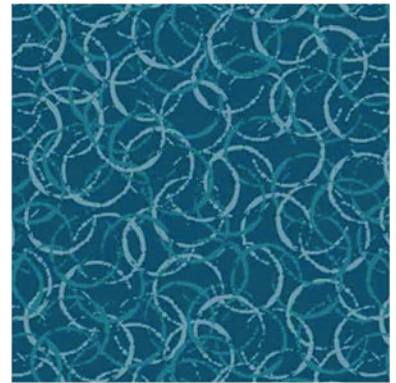
18 19 20

Q02-1



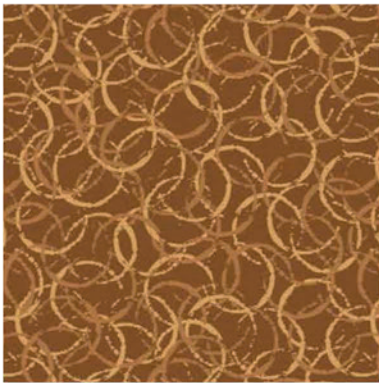
02 03 04

Q02-2



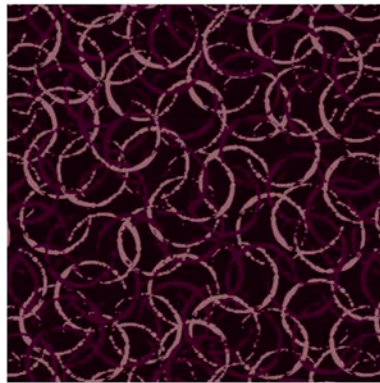
06 07 08

Q02-3



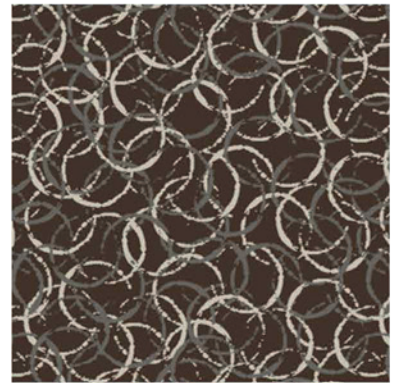
11 12 13

Q02-4



15 16 17

Q02-5



22 23 24

Q02-6



Repeat appr.: 67x66cm



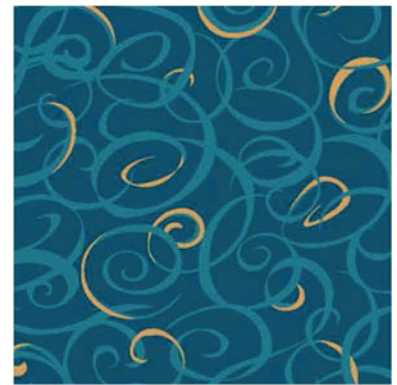
13 18 20

Q03-1



02 03 13

Q03-2



06 07 13

Q03-3



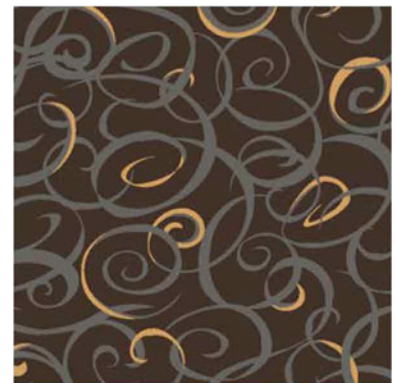
10 12 13

Q03-4



13 16 17

Q03-5

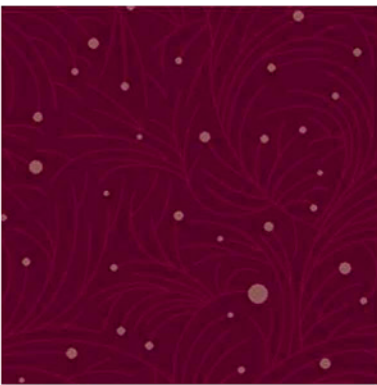


13 22 23

Q03-6

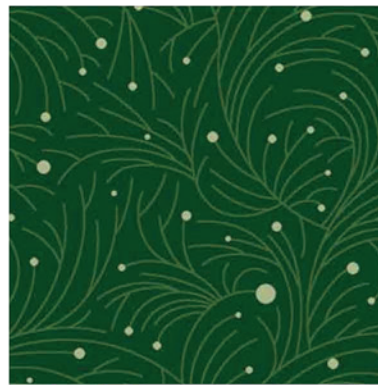


Repeat appr.: 133x66cm



18 19 20

Q04-1



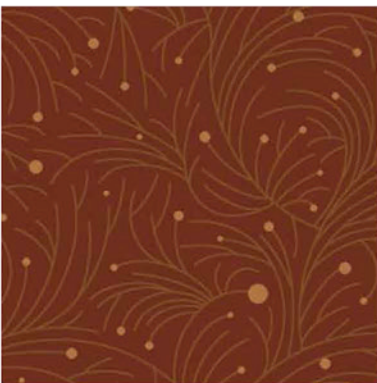
02 03 04

Q04-2



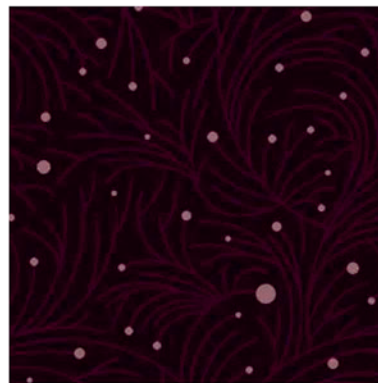
05 06 08

Q04-3



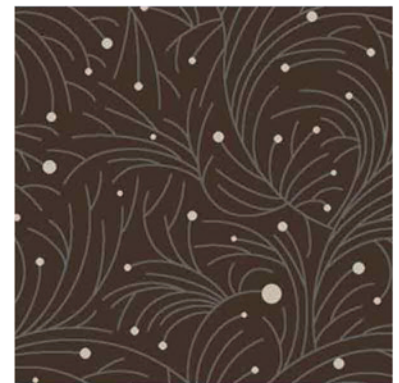
10 11 12

Q04-4



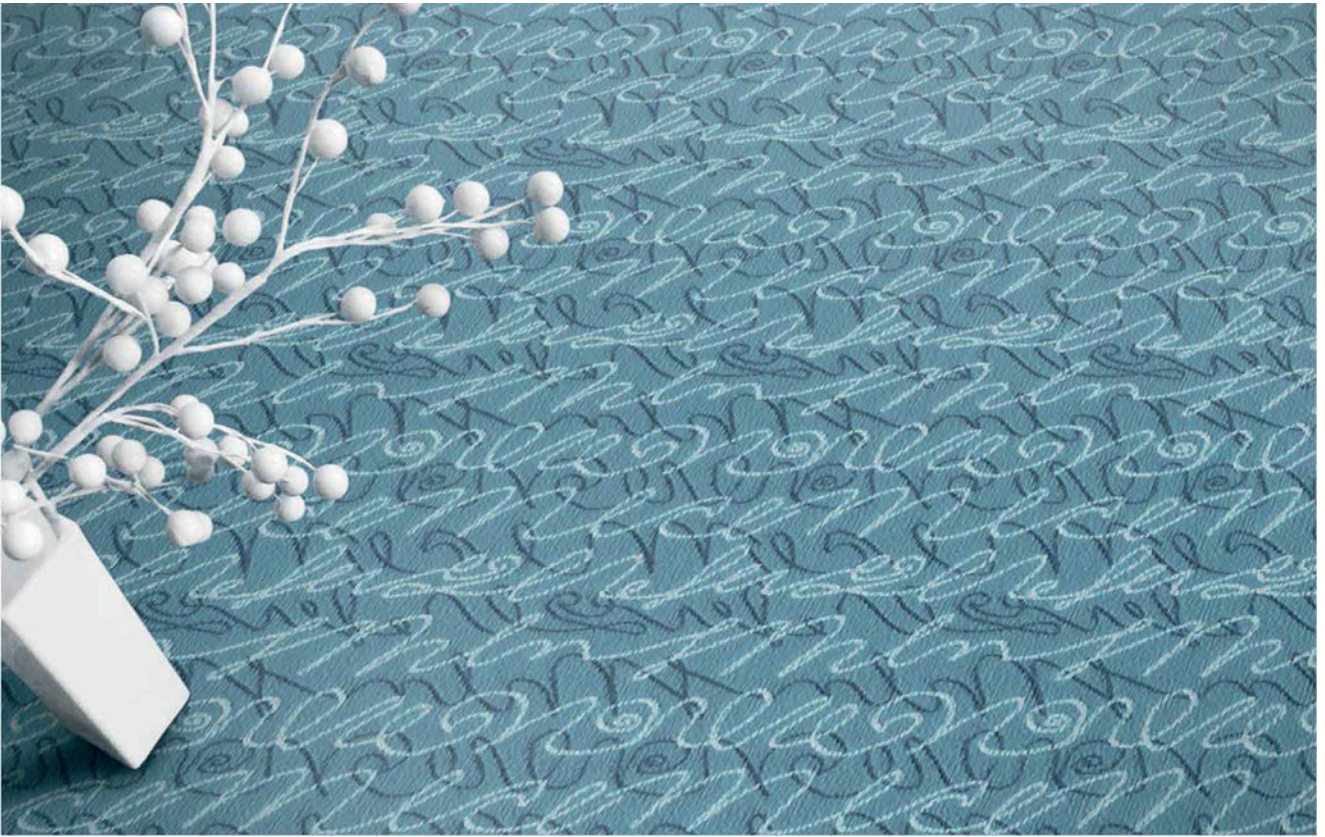
15 16 17

Q04-5



22 23 24

Q04-6



Repeat appr.: 31x30cm



18 19 20

Q05-1



02 03 04

Q05-2



06 07 08

Q05-3



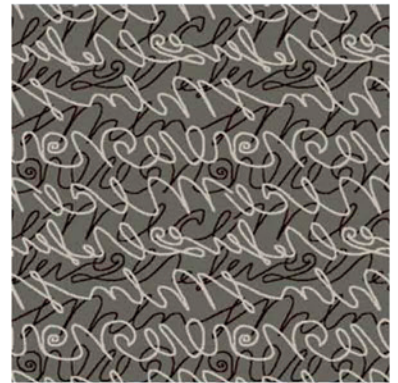
11 12 13

Q05-4



15 16 17

Q05-5



21 23 24

Q05-6

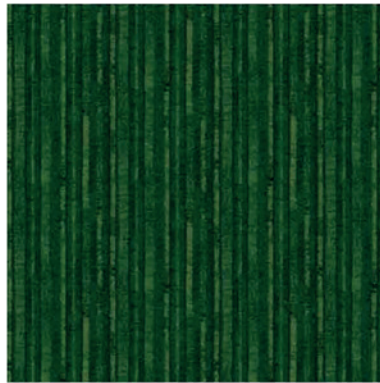


Repeat appr.: 33x32cm



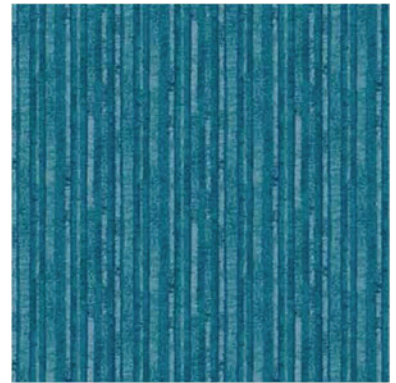
18 19 20

Q06-1



01 02 03

Q06-2



06 07 08

Q06-3



12 13 14

Q06-4



15 16 17

Q06-5

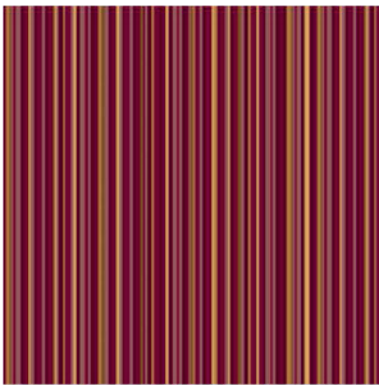


22 23 24

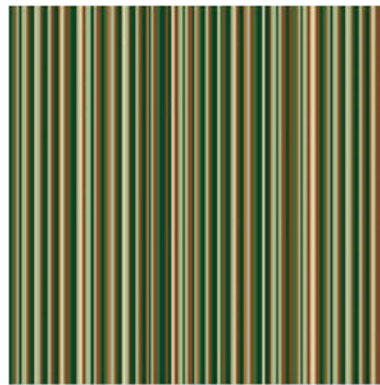
Q06-6



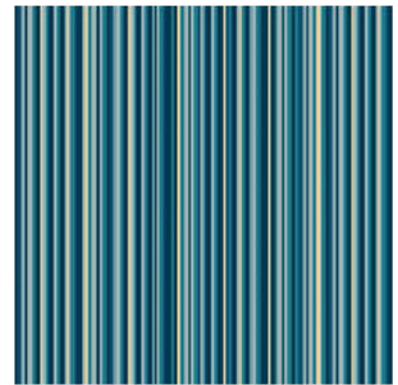
Repeat appr.: 50x49cm



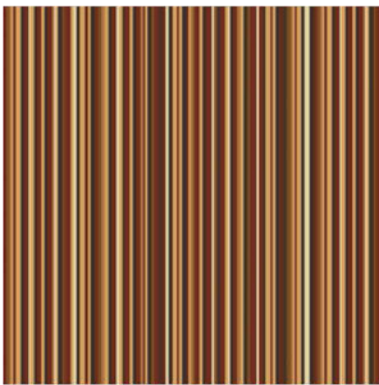
11 12 13 18 19 20 Q07-1



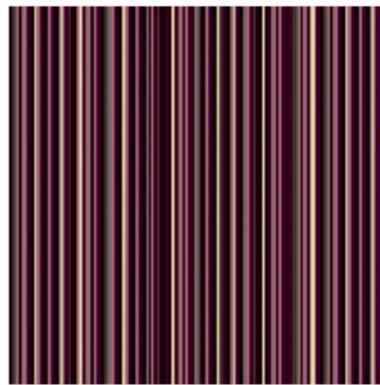
02 03 04 11 12 14 Q07-2



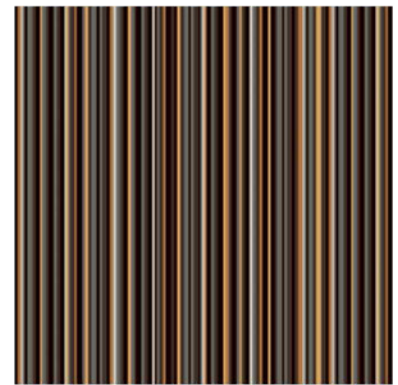
05 06 07 08 09 14 Q07-3



10 11 12 13 14 22 Q07-4



14 15 16 17 22 23 Q07-5



12 13 21 22 23 24 Q07-6



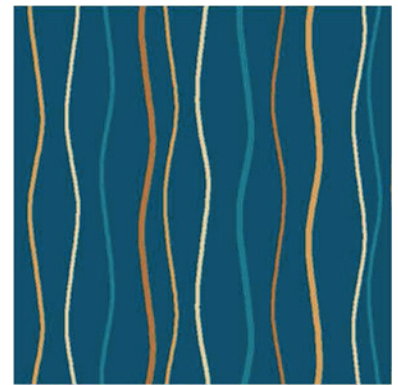
Repeat appr.: 67x33cm



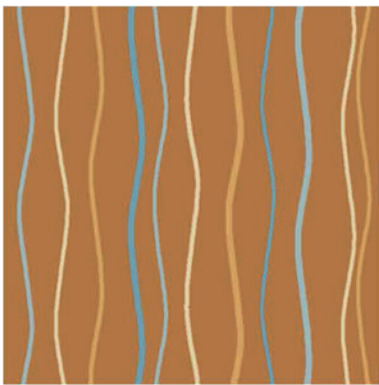
12 13 14 18 20 Q08-1



02 03 12 13 14 Q08-2



06 07 12 13 14 Q08-3



08 09 12 13 14 Q08-4



14 16 17 23 24 Q08-5



12 13 14 22 23 Q08-6

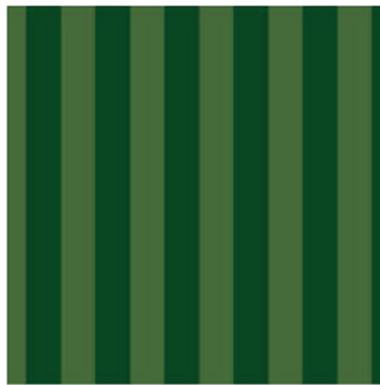


Repeat appr.: 11x11cm



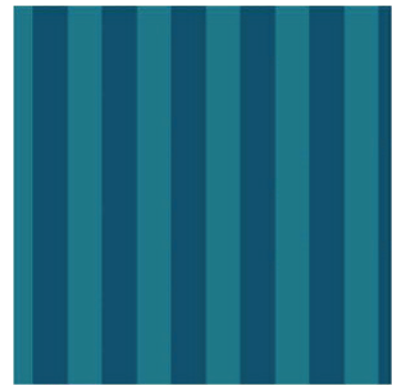
18 20

Q09-1



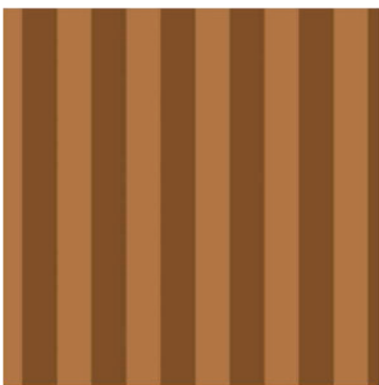
02 03

Q09-2



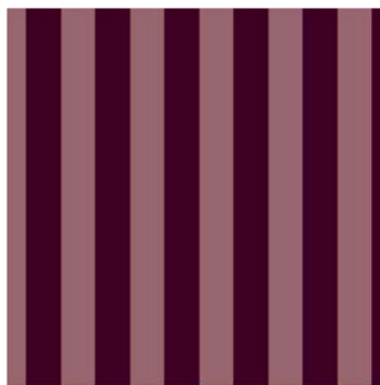
06 07

Q09-3



11 12

Q09-4



16 17

Q09-5



22 23

Q09-6



Repeat appr.: 33x16cm



18 19 20

Q10-1



01 02 03

Q10-2



05 06 07

Q10-3



10 11 12

Q10-4



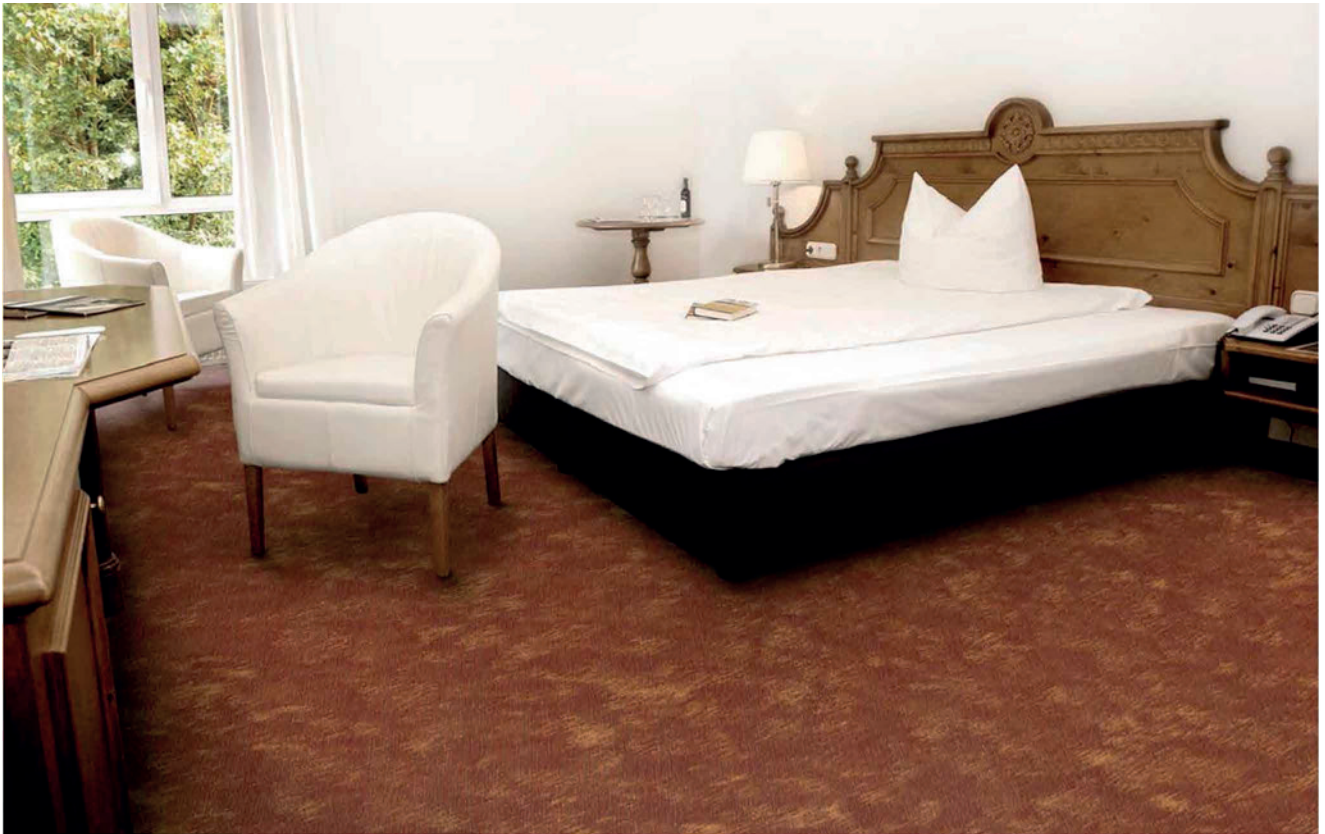
15 16 17

Q10-5

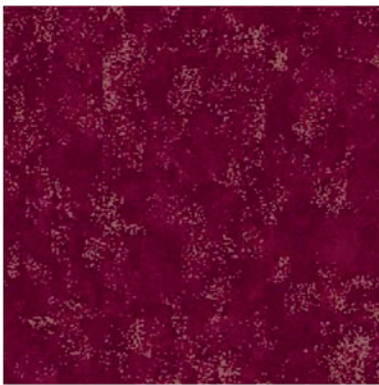


21 22 23

Q10-6



Repeat appr.: 133x156cm



18 19 20

Q11-1



01 02 03

Q11-2



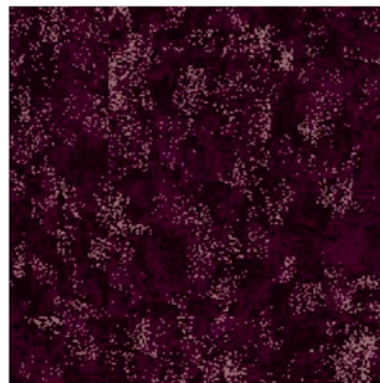
05 06 07

Q11-3



10 11 12

Q11-4



15 16 17

Q11-5



21 22 23

Q11-6



Repeat appr.: 31x47cm



18 20

Q12-1



02 03

Q12-2



06 07

Q12-3



11 12

Q12-4



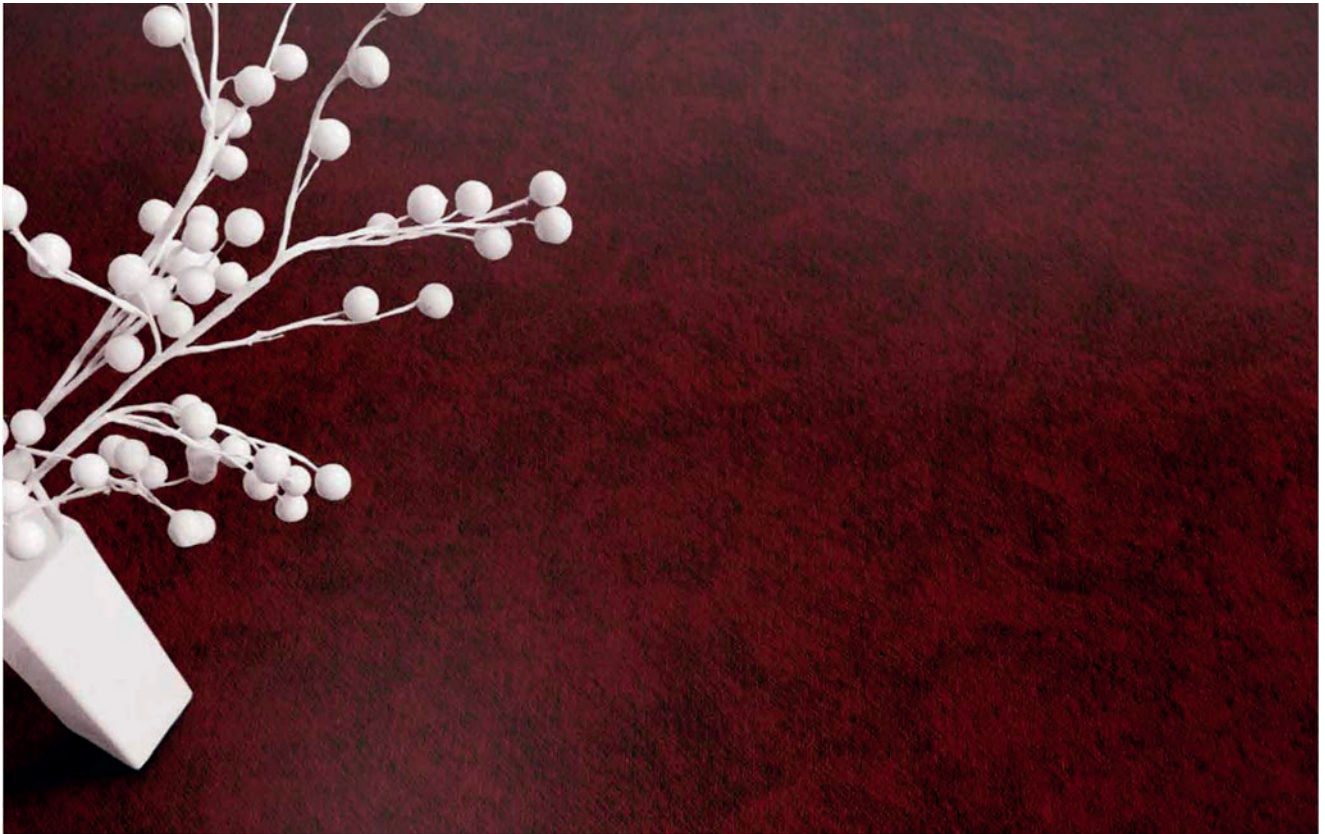
16 17

Q12-5



22 23

Q12-6

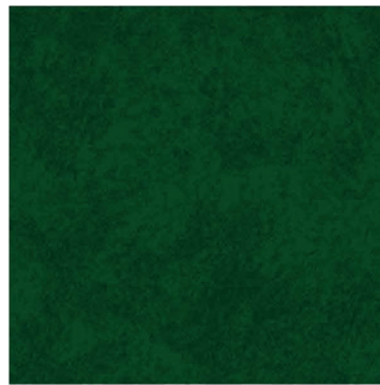


Repeat appr.: 100x98cm



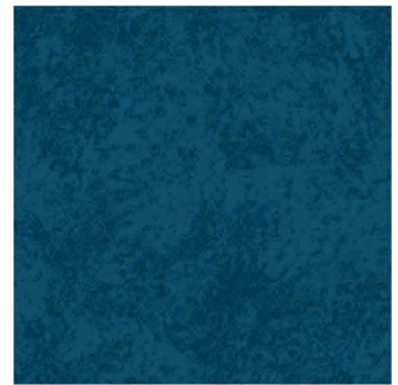
18 19

Q13-1



01 02

Q13-2



05 06

Q13-3



11 12

Q13-4



15 16

Q13-5



21 22

Q13-6



Repeat appr.: 133x120cm



18 20

Q14-1



02 03

Q14-2



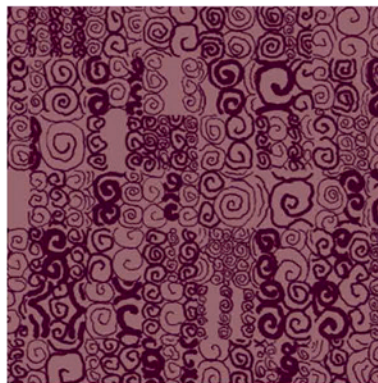
06 07

Q14-3



11 12

Q14-4



16 17

Q14-5

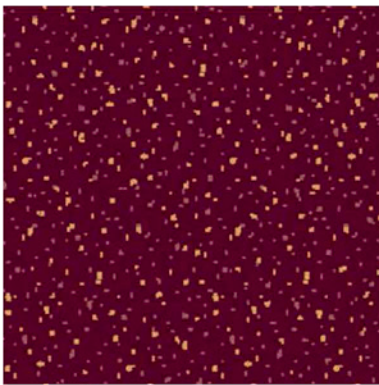


22 23

Q14-6

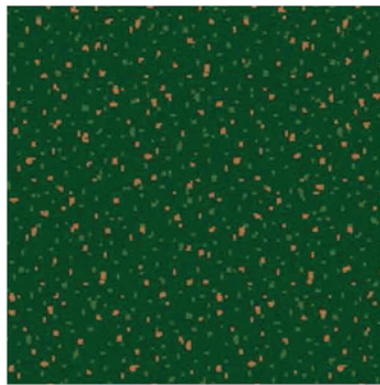


Repeat appr.: 67x66cm



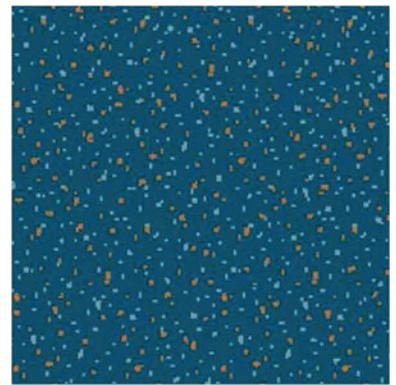
13 18 20

Q15-1



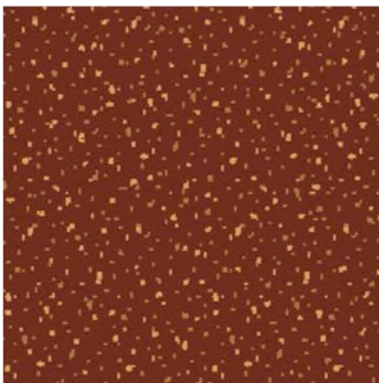
02 03 12

Q15-2



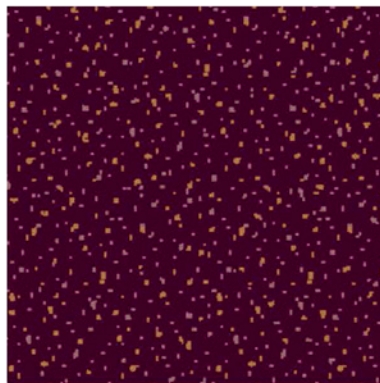
06 08 12

Q15-3



10 12 13

Q15-4



12 16 17

Q15-5

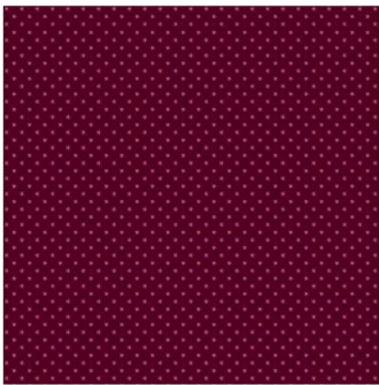


12 21 23

Q15-6



Repeat appr.: 3x3cm



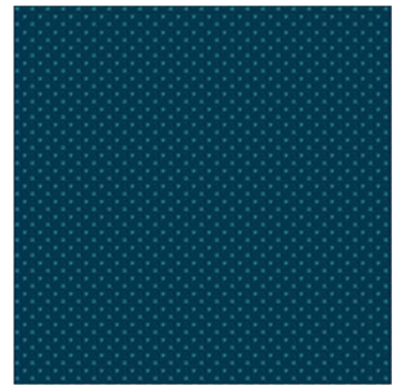
18 20

Q16-1



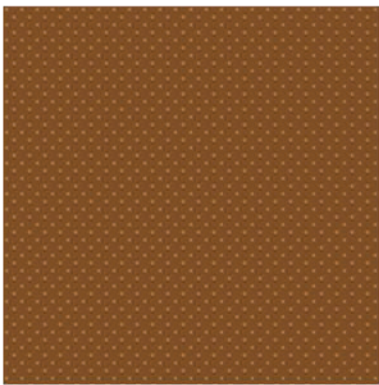
02 03

Q16-2



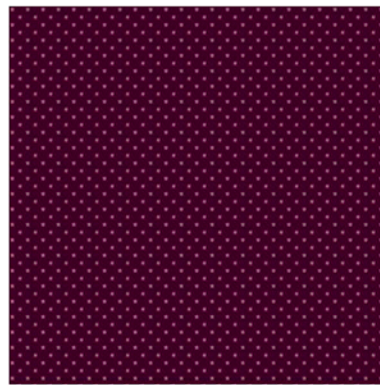
05 07

Q16-3



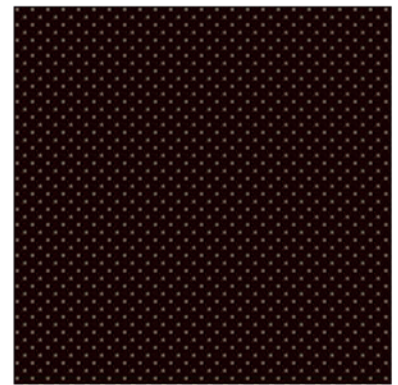
11 12

Q16-4



16 17

Q16-5

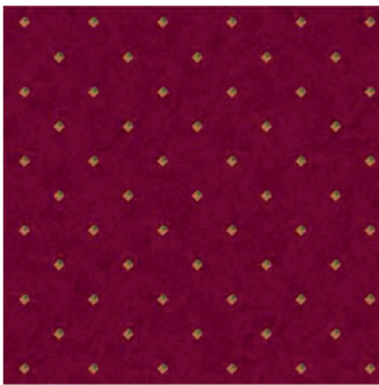


21 23

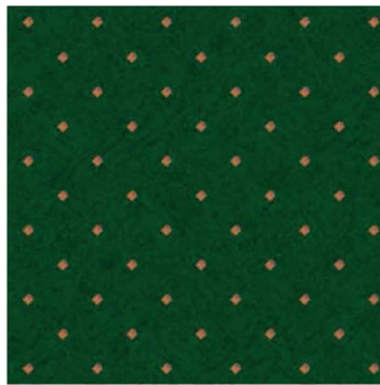
Q16-6



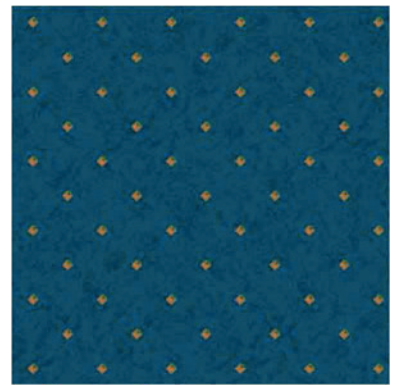
Repeat appr.: 67x66cm



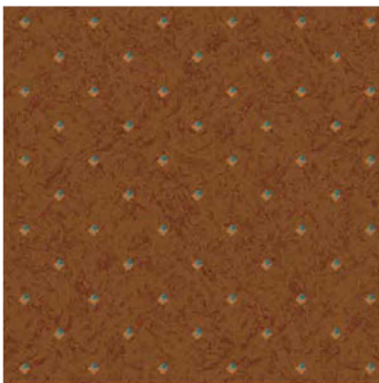
03 12 18 19 Q17-1



01 02 12 20 Q17-2



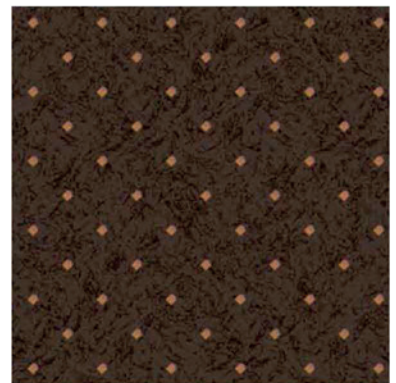
03 05 06 12 Q17-3



07 10 11 12 Q17-4



11 12 15 16 Q17-5



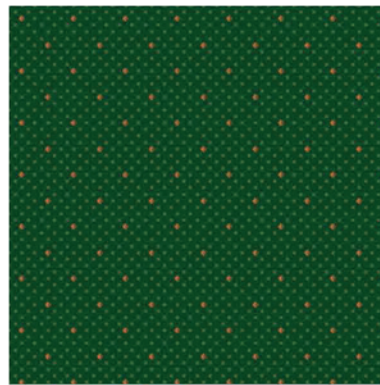
12 17 21 22 Q17-6



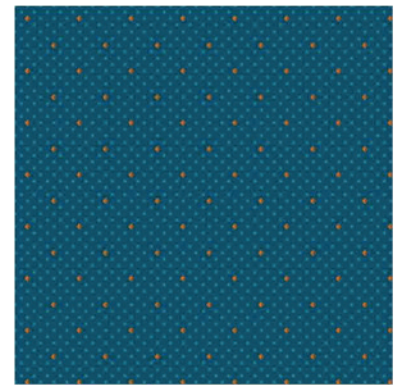
Repeat appr.: 8x8cm



12 13 18 20 Q18-1



02 03 11 12 Q18-2



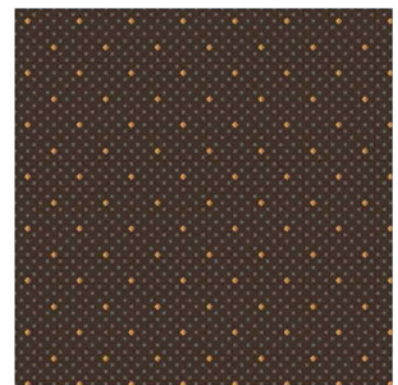
06 07 11 12 Q18-3



11 12 13 14 Q18-4



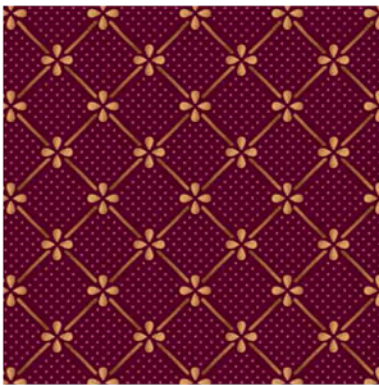
11 12 16 17 Q18-5



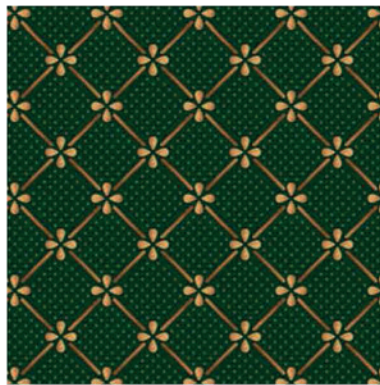
12 13 22 23 Q18-6



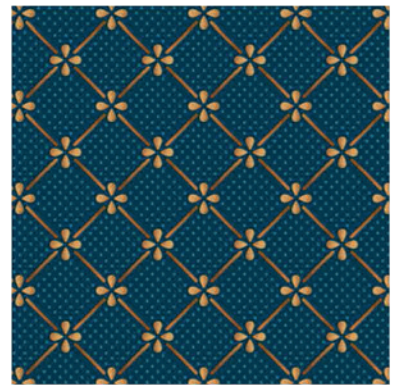
Repeat appr.: 15x15cm



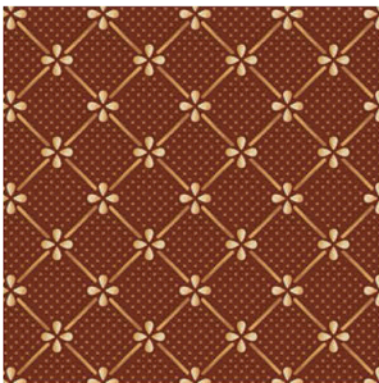
11 12 13 18 20 Q19-1



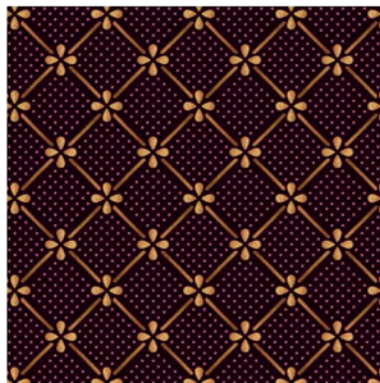
01 03 11 12 13 Q19-2



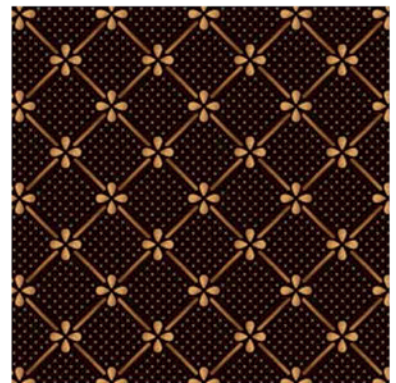
05 07 11 12 13 Q19-3



10 12 13 14 Q19-4



11 12 13 15 17 Q19-5



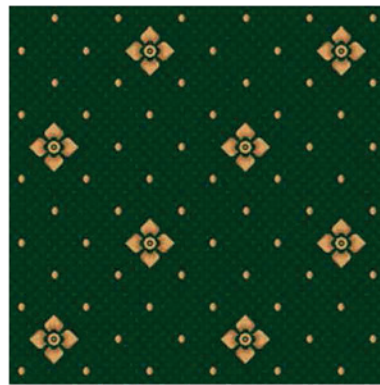
11 12 13 21 23 Q19-6



Repeat appr.: 31x30cm



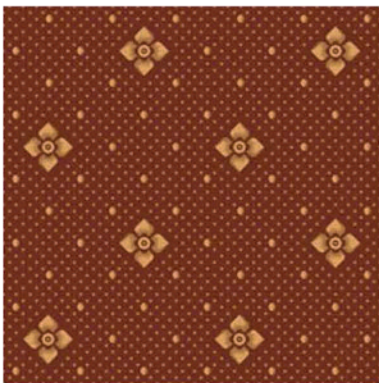
12 13 18 19 Q20-1



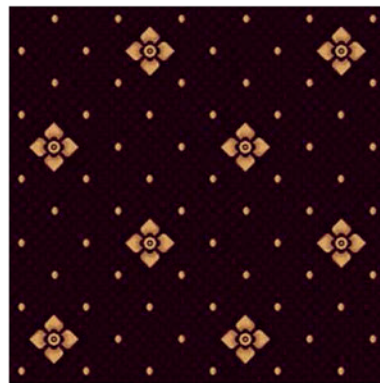
01 02 12 13 Q20-2



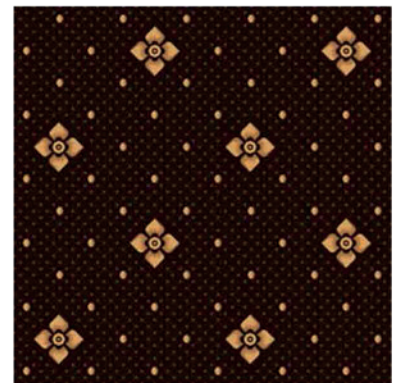
05 06 12 13 Q20-3



10 11 12 13 Q20-4



12 13 15 16 Q20-5



12 13 21 22 Q20-6



Repeat appr.: 33x33cm



12 13 19

Q21-1



02 12 13

Q21-2



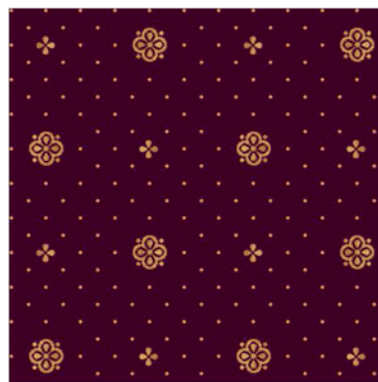
06 12 13

Q21-3



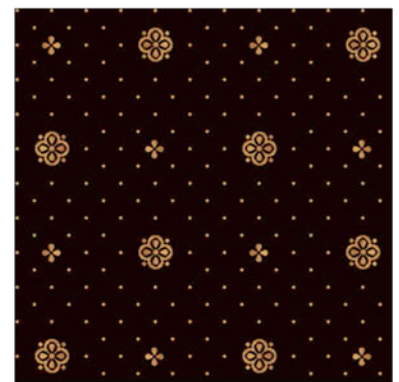
10 12 13

Q21-4



12 13 16

Q21-5



12 13 21

Q21-6



Repeat appr.: 40x86cm



18 20

Q22-1



02 03

Q22-2



06 07

Q22-3



11 12

Q22-4



16 17

Q22-5



21 23

Q22-6



Repeat appr.: 80x56cm



12 13 18 19

Q23-1



01 02 03 04

Q23-2



05 06 07 09

Q23-3



10 11 13 14

Q23-4



15 16 23 24

Q23-5



21 22 23 24

Q23-6



Repeat appr.: 100x106cm



18 19 20

Q24-1



01 03 04

Q24-2



06 08 09

Q24-3



10 12 13

Q24-4



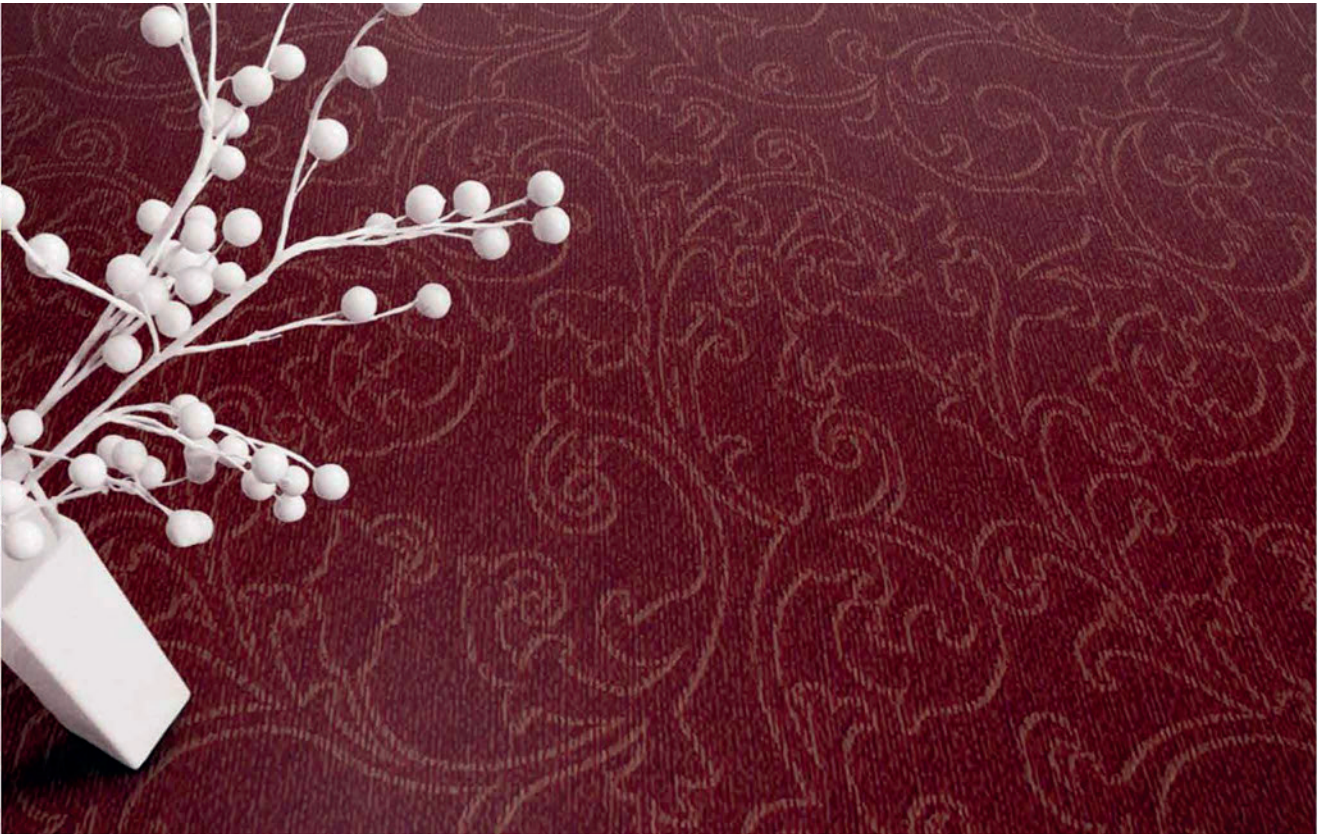
15 16 17

Q24-5

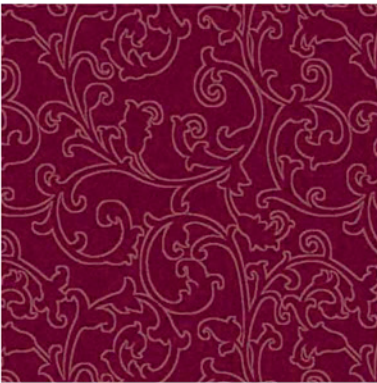


21 23 24

Q24-6



Repeat appr.: 50x49cm



18 19 20

Q25-1



01 02 03

Q25-2



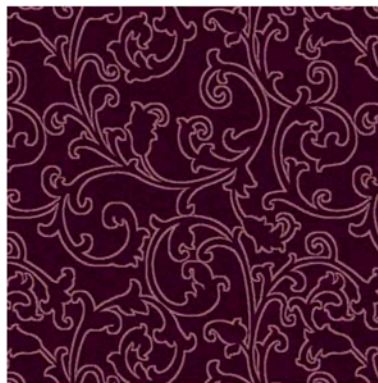
05 06 07

Q25-3



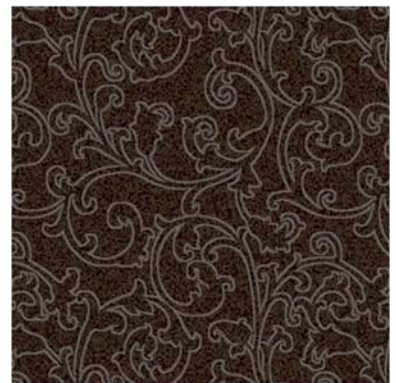
10 11 12

Q25-4



15 16 17

Q25-5



21 22 23

Q25-6



Repeat appr.: 57x37cm



18 19 20

Q26-1



01 02 03

Q26-2



05 06 07

Q26-3



10 11 12

Q26-4



15 16 17

Q26-5



21 22 23

Q26-6



Repeat appr.: 100x119cm



18 19 24

Q27-1



02 03 04

Q27-2



05 06 08

Q27-3



10 11 13

Q27-4



15 16 23

Q27-5

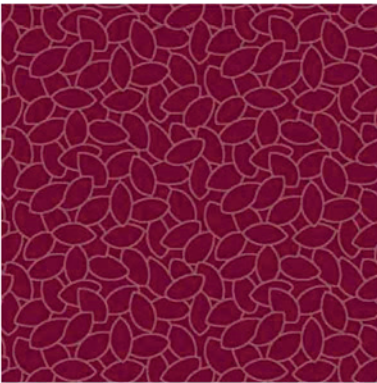


22 23 24

Q27-6

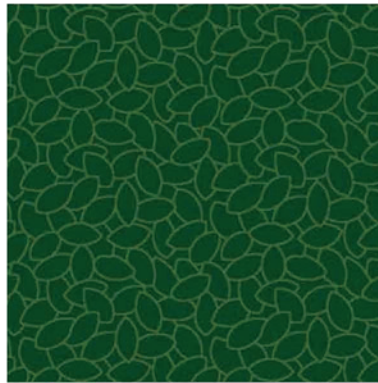


Repeat appr.: 31x21cm



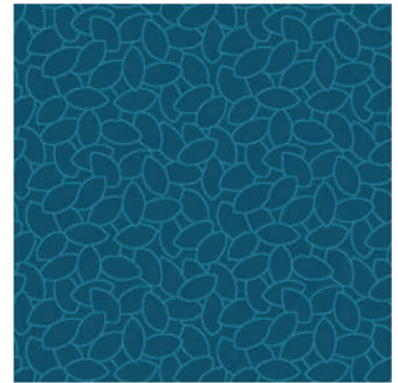
19 20

Q28-1



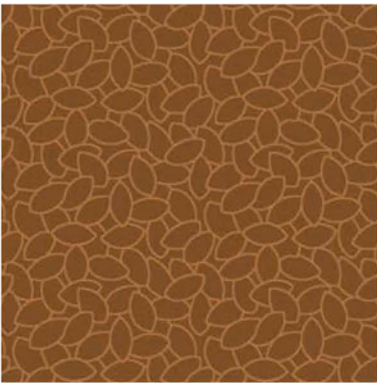
02 03

Q28-2



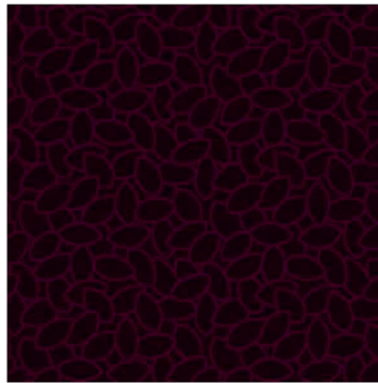
06 07

Q28-3



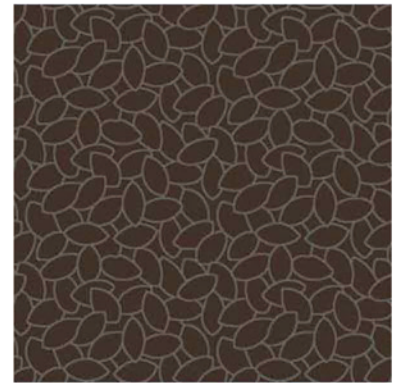
11 12

Q28-4



15 16

Q28-5



22 23

Q28-6



Repeat appr.: 50x48cm



18 20

Q29-1



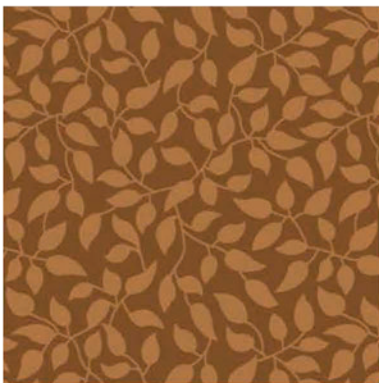
02 03

Q29-2



06 07

Q29-3



11 12

Q29-4



15 16

Q29-5



22 23

Q29-6



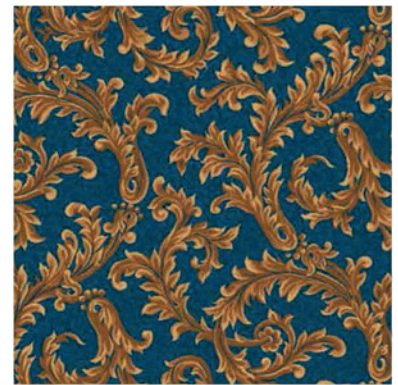
Repeat appr.: 80x56cm



11 12 13 18 19 Q30-1



01 02 11 12 13 Q30-2



05 06 11 12 13 Q30-3



10 11 12 13 14 Q30-4



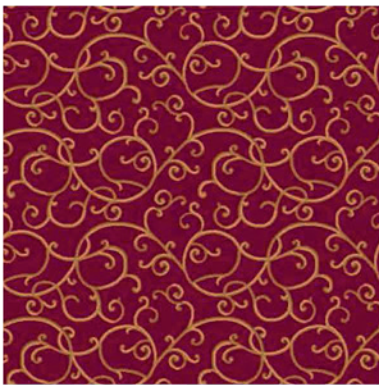
11 12 13 15 16 Q30-5



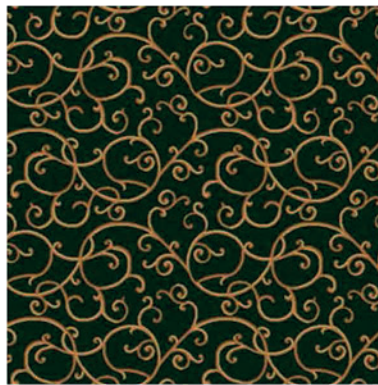
11 12 13 21 22 Q30-6



Repeat appr.: 31x30cm



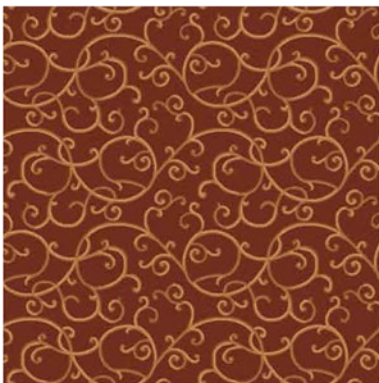
11 12 13 19 Q31-1



01 11 12 13 Q31-2



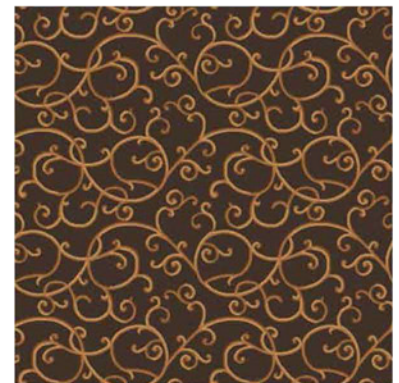
05 11 12 13 Q31-3



10 11 12 13 Q31-4



11 12 13 16 Q31-5



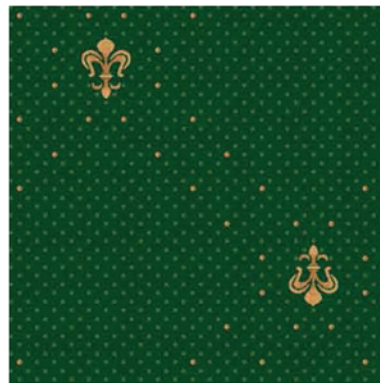
11 12 13 22 Q31-6



Repeat appr.: 67x66cm



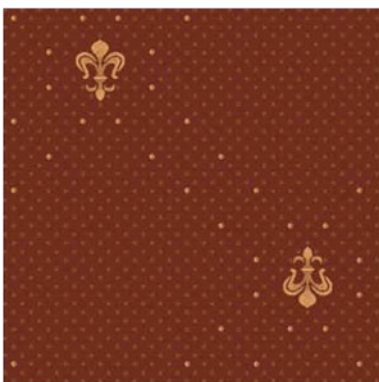
12 13 18 19 Q32-1



02 03 12 13 Q32-2



06 07 12 13 Q32-3



10 11 12 13 Q32-4



12 13 16 17 Q32-5



12 13 22 23 Q32-6



Repeat appr.: 31x30cm



12 13 18 20 Q33-1



02 03 12 13 Q33-2



05 07 12 13 Q33-3



10 11 12 13 Q33-4



12 13 16 17 Q33-5



12 13 21 23 Q33-6



Repeat appr.: 50x49cm



03 11 12 13 18 Q34-1



01 03 11 12 13 Q34-2



03 05 11 12 13 Q34-3



03 10 11 12 13 Q34-4



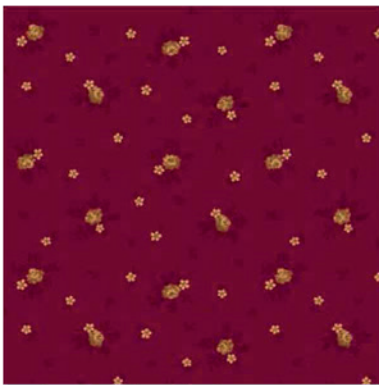
03 11 12 13 16 Q34-5



03 11 12 13 22 Q34-6



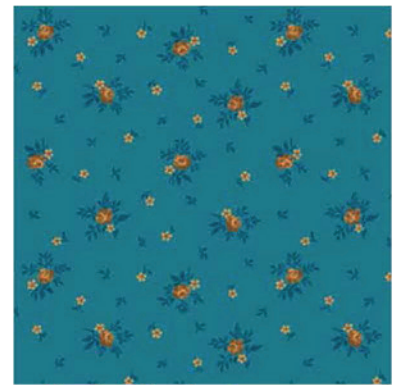
Repeat appr.: 40x39cm



11 12 13 18 19 Q35-1



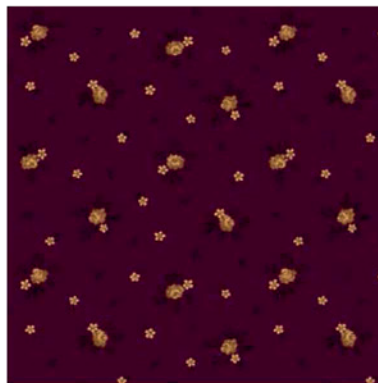
02 03 11 12 13 Q35-2



06 07 11 12 13 Q35-3



11 12 13 14 22 Q35-4



11 12 13 15 16 Q35-5



11 12 13 22 23 Q35-6

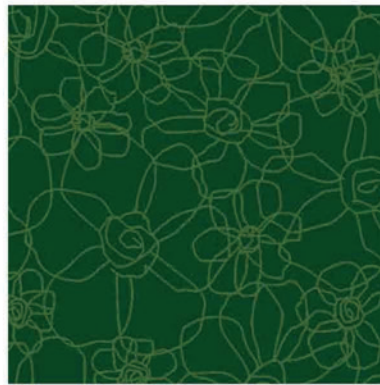


Repeat appr.: 67x66cm



18 20

Q36-1



02 03

Q36-2



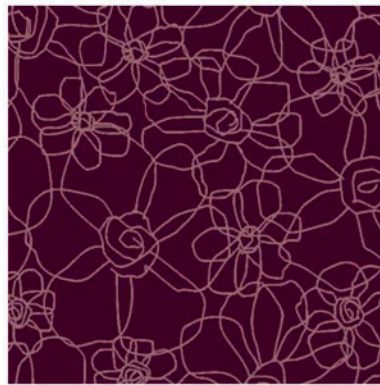
06 07

Q36-3



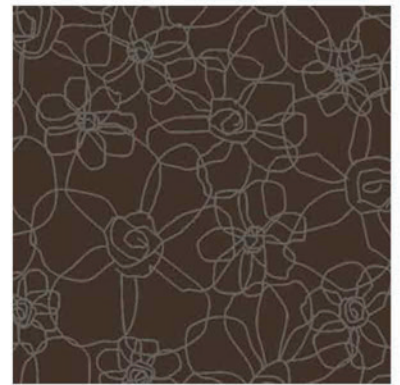
11 12

Q36-4



16 17

Q36-5



22 23

Q36-6

AP 900

Warenkonstruktion Construction Structure		Tufting Velour Saxony 1/10“ tufted cut pile Saxony Velours tufté Saxony
Mustergestaltung Design Dessin		Chromojet Druck Chromojet printed Impression jet d'encre
Polmaterial nach TKG Pile layer Nature de la fibre selon TKG		100% Polyamid 6 100% Polyamide 6 100% polyamide 6.6
Tufting-Träger Primary backing Sous-couche tuftage		75% PES / 25% PA-Vlies 75% PES / 25% PA-non woven
Rückenausrüstung Secondary backing Dossier d'envers		textiler Zweitrücken woven PP action back
Lieferform Available size Format de livraison	Bahnenware rolls Moquette	400 cm
Verwendungsbereich Wear rating Domaine d'application	EN 1307	gewerblich - stark (33) commercial - heavy industriel - fort
Komfortwert Comfort rating Valeur de confort	EN 1307	LC 2
Flächengewicht Total weight Grammage total	ISO 8543	ca. 1970 g/m ² app. 1970 g/m ²
Gesamtdicke Total thickness Épaisseur totale	ISO 1765	ca. 7 mm app. 7 mm
Poleinsatzgewicht Pile total yarn weight Poids du velours		ca. 910 g/m ² app. 910 g/m ²
Polschichtdicke Pile height above primary backing Épaisseur du velours	ISO 8543	ca. 4,4 mm app. 4,4 mm
Pol-Rohdichte Pile density Densité brute du velours	ISO 8543	ca. 0,15 g/cm ³ app. 0,15 g/cm ³
Noppenzahl Number of tufts Nombre de tufts	ISO 1763	ca. 169850 /m ² app. 169850 /m ²
Elektostatisches Verhalten Vertical resistance Comportement électrostatique	ISO 6356	≤ 2 kV
Bewertete Trittschallminderung Impact sound reduction Indice de réduction des bruits d'impact	ISO 140-8	ca. 27 dB app. 27 dB
Schallabsorptionsgrad α_w Sound absorption rate Coéfficient d'absobtion acoustique	ISO 354	ca. 0,2 app. 0,2
Wärmedurchlaßwiderstand Thermal resistance Résistivité thermique	ISO 8302	ca. 0,13 m ² K/W app. 0,13 m ² K/W
Allgemeine bauaufsichtliche Zulassung (abZ) abZ-number (for Germany) Agrément technique		Z-156.601-617
Brandverhalten Reaction to fire Comportement au feu	EN 13501	Cfl-s1
Lichtechtheit Colour fastness to light Stabilité à la lumière	DIN EN ISO 105 B02	≥ 5
Wasserechtheit Colour fastness to water Résistance à l'eau	DIN EN ISO 105 E01	≥ 4
Reibechtheit Colour fastness to rubbing Résistance à l'usure par friction	DIN EN ISO 105 X12	≥ 3-4
	Zusatzeignungen Additional properties Caractéristiques supplémentaires	



01 6120	13 2051
02 6067	14 8050
03 6063	15 3068
04 6078	16 3063
05 5079	17 4055
06 5077	18 3071
07 5074	19 3078
08 5073	20 3080
09 6050	21 8070
10 2065	22 8068
11 2063	23 8066
12 2053	24 8064



CARPET PRODUCT GUIDE



Halbmond Teppichwerke GmbH
Brückenstraße 1
D-08606 Oelsnitz, Germany
Tel.: +49 37421-42-0
Fax: +49 37421-42-571
info@halbmond.de
www.halbmond.de



HTW DESIGN CARPET
Mindener Str. 6
D-32049 Herford
Tel.: +49 5221-1779-0
Fax: +49 5221-1779-79
info@htw-designcarpet.de
www.htw-designcarpet.de