

# READY TO GO VINYL?

BEAUFLOR **PRO**

## COMMERCIAL VINYL ROLLS 2025

Discover our wide range of  
vinyl rolls for professional use

**BEAU  
FLOR**<sup>®</sup>  
we decorate your floor



# A fresh take on vinyl

LIANA 999D - EXPOLINE



At Beauflor, we believe that great floors make great businesses. That's why our design team has been researching the world's current trends, textures and styles to make our Beauflor PRO collections come to life.

Thanks to our different performance levels within our ranges, we are safe in the knowledge that you have all the options of quality and durability with the perfect balance of contemporary or traditional colour palettes and styles to choose from. Are you ready to find the perfect fit for your business?

HOUSING

HOSPITALITY

RETAIL

OFFICES

PUBLIC SPACES

SCHOOLS ...

# THE BEAULIEU INTERNATIONAL GROUP

Beaulieu International Group is a renowned international group with headquarters in Belgium. Today this industrial group holds a solid market position both in producing raw materials and intermediate goods and in offering an extensive range of perfectly finished floor coverings. And we, at Beauflor, are proud to be part of the Beaulieu International Group.

With 3 distinct business units, Beaulieu International Group is a vertically integrated group producing raw materials, semi-finished and finished products.

You will be introduced to the first group: "Flooring Solutions", in this brochure. A second business unit, "Polymers", produces polypropylene granules for numerous applications. And the third business unit, "Engineered Products", houses the activities Fibres, Yarns, Technical Textiles and Technical Sheets.

Beaulieu International Group has over 4900 employees in some 49 sites spread across 17 countries. The Beaulieu International Group's entrepreneurial spirit and innovative ambitions make it the model of diversity and evolution within the sector. They allow it to create added value sustainably for customers, employees, suppliers, shareholders and for the society in which it operates.

Explore this brochure to find out what we can bring to your flooring projects as a partner.



# Great floors make great future



Xtreme Lux	10
Xtreme	16
Phoni-Xtreme	28
Ambient	38
Titan	44
Techno-Tex	50
Expoline	56
Phonitec	62
Sonipro	68
Resitex	76
Fairplay	82
Beauflor Create	90
Technical Datasheets	102
Sustainability	116
Classification of use	124
Installations instructions	126

## PRO RANGE

High performance flooring comes in different styles and forms. That's why we at Beauflor carry a wide range of 11 professional collections. From education to hospitality and from offices to public spaces, we're sure you'll find the perfect fit for your business. Let your imagination run wild and be sure to test our limits. Are you ready to roll with us?

# Find your perfect fit



COLLECTION	TOTAL THICKNESS	WEAR LAYER	TOTAL WEIGHT	CLASSIFICATION	IMPACT SOUND	SLIP RESISTANCE
XTREME LUX	2,00 mm	0,70 mm	2800 g/m <sup>2</sup>	23-34-43	Δ Lw 6 dB	R10
XTREME	2,00 mm	0,70 mm	2800 g/m <sup>2</sup>	23-34-43	Δ Lw 6 dB	R10
PHONI-XTREME	3,35 mm	0,70 mm	2400 g/m <sup>2</sup>	23-34-42	Δ Lw 19 dB	R10
AMBIENT	2,50 mm	0,70 mm	2600 g/m <sup>2</sup>	23-33-42	Δ Lw 13 dB	DS
TITAN	2,50 mm	0,60 mm	2200 g/m <sup>2</sup>	23-33-42	Δ Lw 16 dB	R10
TECHNO-TEX	2,60 mm	0,55 mm	2370 g/m <sup>2</sup>	23-33-42	Δ Lw 14 dB	R11
EXPOLINE	2,00 mm	0,40 mm	1600 g/m <sup>2</sup>	23-32-41	Δ Lw 10 dB	R10
PHONITEC	3,30 mm	0,37 mm	2270 g/m <sup>2</sup>	23-32-41	Δ Lw 20 dB	R10
SONIPRO	3,00 mm	0,35 mm	1850 g/m <sup>2</sup>	23-32-41	Δ Lw 19 dB	R10
RESITEX	2,70 mm	0,35 mm	2000 g/m <sup>2</sup>	23-32-41	Δ Lw 16 dB	R10
FAIRPLAY	2,00 mm	0,20 mm	1250 g/m <sup>2</sup>	22	Δ Lw 10 dB	R10

COLLECTION	EVENTS & FAIRS	HOUSING	OFFICE	EDUCATION	RETAIL	HOSPITALITY	LEISURE	HEALTHCARE	INDUSTRY
XTREME LUX			●	●	●	●	●	●	●
XTREME			●	●	●	●	●	●	●
PHONI-XTREME			●	●	●	●	●	●	●
AMBIENT		●	●	●	●	●	●	●	●
TITAN		●	●	●	●	●	●	●	●
TECHNO-TEX		●	●	●	●	●	●	●	●
EXPOLINE		●	●	●	●	●			
PHONITEC		●	●	●	●	●			
SONIPRO		●	●	●	●	●			
RESITEX		●	●	●	●	●			
FAIRPLAY	●								

# Let's go pro!



## DESIGNED BY PROFESSIONALS FOR PROFESSIONALS

**This outstanding range of high performance luxury vinyl floors provides architects, interior designers or other specifiers with a wide range of decorative solutions, designed exclusively for contract and commercial use.**

### It all starts with the look!

A great interior demands the perfect finish. The Beauflor design team has scoured the world for the latest trends to produce a stunning selection of up to the minute designs which will keep you ahead of the game.

Whether you are looking for a traditional timber, marble or tile effect finish, or something more eye-catching, like polished concrete or a stunning geometric design, we've got the perfect solution for your next project.

### Beauty that is more than skin deep

Nobody likes to eat in a loud, echoey restaurant or listen to the impact of footsteps on an upper floor. Many of the floors in our Beauflor PRO range are available with a specially engineered soft foam backing, which has a sound absorbent co-efficient of between 19 and 20 dB, helping to make our public spaces far more comfortable and relaxing places to be.

### Durable and hard wearing

When the going gets tough, our heavy duty flooring is as tough as it gets. It has an extra thick wear layer, which has been engineered to handle the heaviest contract applications with ease, shrugging off scratches and stains without the need for waxes or polish and making light work of heavy foot traffic.

### Hygienic and easy to clean

Our vinyl floors have a 100% water resistant toplayer and are non-reactive to grease, dirt and everyday chemicals. They have a smooth surface which can be seam sealed, making them easy to clean. Some of our floors are also available with Bacteria Shield+ Technology. This in-built antimicrobial treatment will kill 99.9% of bacteria for the lifetime of the product - making it the perfect choice for medical centres, children's nurseries and care homes, where a beautiful appearance needs to be combined with a hygienic finish.

### Easy to fit

Ease of installation is a major consideration in an age of rising costs. Laying a Beauflor PRO vinyl floor is quick and easy. The vinyl is supple and forgiving. It can be cut with a utility knife and in some cases "loose laid" without the need for any adhesive or additional materials. Laying a vinyl floor is the last minute addition which can transform the appearance of the room.

### Kind to the planet

Beauflor is committed to reducing its carbon footprint and maintaining the highest environmental standards. We aim to reduce, re-use and recycle at every point of operation. All our vinyl sheet products are ortho-phthalates free. We only use non-halate plasticisers, such as DOTP which has been evaluated by the ECHA (European Chemicals Agency) as a 'SAFE' product to use. By manufacturing in Europe, we are closer to our markets which means that our products have fewer miles to travel; this helps us to control our carbon footprint and reduce the impact of climate change for future generations.

**Whatever the nature of your next project, you will be in safe hands if you specify Beauflor.**

# Xtreme Lux



## Applications

Office  
Education  
Leisure  
Retail  
Hospitality  
Healthcare  
Industry



SUNRISE OAK 916M

DIGITAL PRINT



**WILLOW**  
Finish: Sand + Biocidal 2 / 4 m  
Plank size: Diff. plank sizes →  
Repeat: 100 x 300 cm →  
2m: 50060454 4m: 50060455



**PACIFIC OAK 268M**  
Finish: Sand + Biocidal 2 / 4 m  
Plank size: Diff. widths x 200 cm →  
Repeat: 200 x 400 cm →  
2m: 50060434 4m: 50060435



PACIFIC OAK 699D



**PACIFIC OAK 139L**  
Finish: Sand + Biocidal 2 / 4 m  
Plank size: Diff. widths x 200 cm →  
Repeat: 200 x 400 cm →  
2m: 50060432 4m: 50060433



**PACIFIC OAK 699D**  
Finish: Sand + Biocidal 2 / 4 m  
Plank size: Diff. widths x 200 cm →  
Repeat: 200 x 400 cm →  
2m: 50060440 4m: 50060441



**PACIFIC OAK 639M**  
Finish: Sand + Biocidal 2 / 4 m  
Plank size: Diff. widths x 200 cm →  
Repeat: 200 x 400 cm →  
2m: 50060436 4m: 50060437



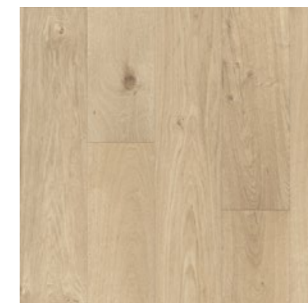
**PACIFIC OAK 696D**  
Finish: Sand + Biocidal 2 / 4 m  
Plank size: Diff. widths x 200 cm →  
Repeat: 200 x 400 cm →  
2m: 50060438 4m: 50060439



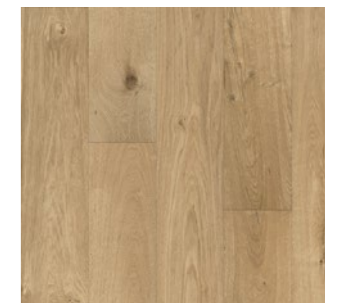
**SUNRISE OAK 191L**  
Finish: Sand + Biocidal 2 / 4 m  
Plank size: 22 x 200 cm →  
Repeat: 200 x 200 cm →  
2m: 50060446 4m: 50060447



**SUNRISE OAK 916M**  
Finish: Sand + Biocidal 2 / 4 m  
Plank size: 22 x 200 cm →  
Repeat: 200 x 200 cm →  
2m: 50060450 4m: 50060451



**SUNRISE OAK 169L**  
Finish: Sand + Biocidal 2 / 4 m  
Plank size: 22 x 200 cm →  
Repeat: 200 x 200 cm →  
2m: 50060444 4m: 50060445



**SUNRISE OAK 619M**  
Finish: Sand + Biocidal 2 / 4 m  
Plank size: 22 x 200 cm →  
Repeat: 200 x 200 cm →  
2m: 50060448 4m: 50060449



CLARKSON 327M



RUSH



**RUSH**  
Finish: Sand + Biocidal  
Size: Allover  
Repeat: 100 x 100 cm  
2m: 50060442 4m: 50060443



**CLARKSON 327M**  
Finish: Sand + Biocidal  
Size: Allover  
Repeat: 200 x 200 cm  
2m: 50060428 4m: 50060429



**TREVISO 617L**  
Finish: Sand + Biocidal  
Size: Allover  
Repeat: 200 x 150 cm  
2m: 50060452 4m: 50060453



**LAZIO 199M**  
Finish: Sand + Biocidal  
Size: Allover  
Repeat: 200 x 150 cm  
2m: 50060430 4m: 50060431

# Xtreme



## Applications

- Office
- Education
- Leisure
- Retail
- Hospitality
- Healthcare
- Industry



NATURAL OAK 369M



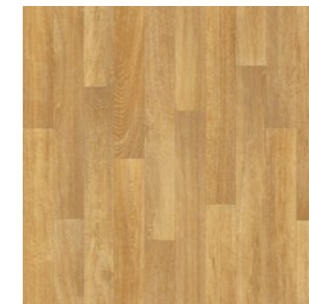
HAVANNA OAK 602M



**GOLDEN OAK 696L**  
Finish: Sand + Biocidal 2 / 3 / 4 m  
Plank size: 10 x 100 cm →  
Repeat: 100 x 100 cm →  
2m: 50039263 3m: 50040589 4m: 50039890



**GOLDEN OAK 690L**  
Finish: Sand + Biocidal 2 / 3 / 4 m  
Plank size: 10 x 100 cm →  
Repeat: 100 x 100 cm →  
2m: 50039254 3m: 50041517 4m: 50040393



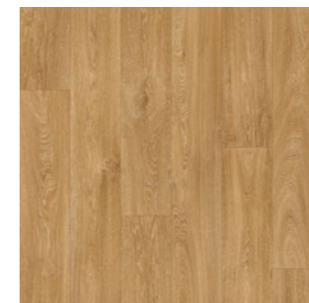
**NATURAL OAK 226M**  
Finish: Sand + Biocidal 2 / 4 m  
Plank size: 10 x 100 cm →  
Repeat: 100 x 100 cm →  
2m: 50039253 4m: 50039880



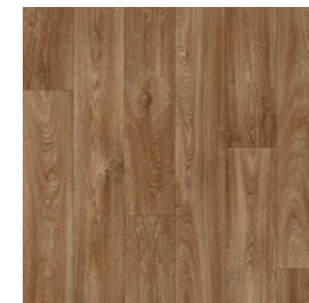
**NATURAL OAK 369M**  
Finish: Sand + Biocidal 2 / 3 / 4 m  
Plank size: 10 x 100 cm →  
Repeat: 100 x 100 cm →  
2m: 50039255 3m: 50041515 4m: 50040394



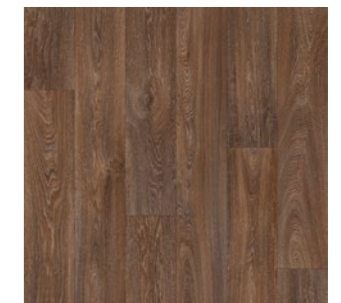
**HAVANNA OAK 696L**  
Finish: Sand + Biocidal 2 / 4 m  
Plank size: 16,6 x 150 cm →  
Repeat: 100 x 150 cm →  
2m: 50039258 4m: 50039885



**HAVANNA OAK 662M**  
Finish: Sand + Biocidal 2 / 3 / 4 m  
Plank size: 16,6 x 150 cm →  
Repeat: 100 x 150 cm →  
2m: 50039252 3m: 50041516 4m: 50040392



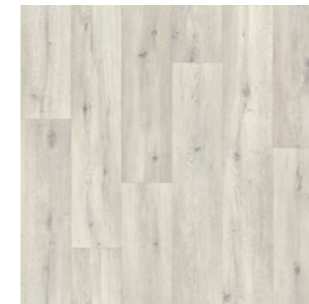
**HAVANNA OAK 602M**  
Finish: Sand + Biocidal 2 / 3 / 4 m  
Plank size: 16,6 x 150 cm →  
Repeat: 100 x 150 cm →  
2m: 50039251 3m: 50040590 4m: 50039878



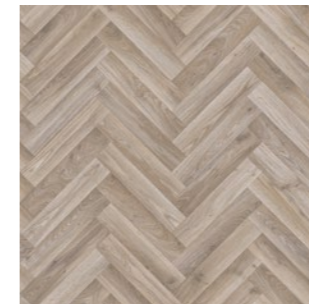
**HAVANNA OAK 694M**  
Finish: Sand + Biocidal 2 / 3 / 4 m  
Plank size: 16,6 x 150 cm →  
Repeat: 100 x 150 cm →  
2m: 50039256 3m: 50040592 4m: 50039883



OAK CHEVRON 913M



**SILK OAK 109S**  
Finish: **Sand + Biocidal** 2 / 3 / 4 m  
Plank size: 16,6 x 100 cm →  
Repeat: 100 x 100 cm →  
2m: 50039929 3m: 50040607 4m: 50037191



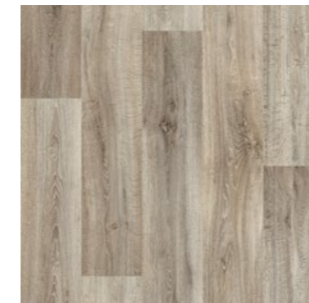
**OAK CHEVRON 913M**  
Finish: **Sand + Biocidal** 2 / 3 / 4 m  
Plank size: 7 x 35,3 cm →  
Repeat: 100 x 100 cm →  
2m: 50039260 3m: 50040605 4m: 50039887



**PURE OAK 904M**  
Finish: **Sand + Biocidal** 2 / 4 m  
Plank size: 16,6 x 100 cm →  
Repeat: 100 x 100 cm →  
2m: 50039264 4m: 50040395



**PURE OAK 946E**  
Finish: **Sand + Biocidal** 2 / 3 / 4 m  
Plank size: 16,6 x 100 cm →  
Repeat: 100 x 100 cm →  
2m: 50039266 3m: 50040606 4m: 50039893



**LIME OAK 976M**  
Finish: **Sand + Biocidal** 2 / 3 / 4 m  
Plank size: 20 x 150 cm →  
Repeat: 100 x 150 cm →  
2m: 50039261 3m: 50040593 4m: 50039888



**LANNION 319M**  
Finish: **Sand + Biocidal** 2 / 4 m  
Size: Allover →  
Repeat: 200 x 100 cm →  
2m: 50060181 4m: 50060155



**LANNION 669M**  
Finish: **Sand + Biocidal** 2 / 4 m  
Size: Allover →  
Repeat: 200 x 100 cm →  
2m: 50060183 4m: 50060153



**LANNION 966M**  
Finish: **Sand + Biocidal** 2 / 4 m  
Size: Allover →  
Repeat: 200 x 100 cm →  
2m: 50060182 4m: 50060154



PURE OAK 904M



PITTSBURGH 976D



**PITTSBURGH 976D**  
Finish: Sand + Biocidal  
Size: Allover  
Repeat: 200 x 150 cm  
2m: 50051278 4m: 50051194



**SARA 769D**  
Finish: Sand + Biocidal  
Size: Allover  
Repeat: 100 x 100 cm  
2m: 50060179 4m: 50060157



**SARA 699D**  
Finish: Sand + Biocidal  
Size: Allover  
Repeat: 100 x 100 cm  
2m: 50060178 4m: 50060158



**SARA 139M**  
Finish: Sand + Biocidal  
Size: Allover  
Repeat: 100 x 100 cm  
2m: 50060180 4m: 50060156



**MONTREAL 900M**  
Finish: Sand + Biocidal  
Size: Allover  
Repeat: 200 x 150 cm  
2m: 50058416 4m: 50058415



**TWEED 956D**  
Finish: Sand + Biocidal  
Size: Allover  
Repeat: 100 x 100 cm  
2m: 50060132 4m: 50060111



**TWEED 696D**  
Finish: Sand + Biocidal  
Size: Allover  
Repeat: 100 x 100 cm  
2m: 50060133 4m: 50060110



SARA 769D



ROXANNE 220M - 330M - 440M - 610L



**ROXANNE 770M**  
Finish: Sand + Biocidal  
Size: Allover  
Repeat: 100 x 100 cm  
2m: 50060126 4m: 50060117



**ROXANNE 550M**  
Finish: Sand + Biocidal  
Size: Allover  
Repeat: 100 x 100 cm  
2m: 50060125 4m: 50060118



ROXANNE 550M - 770M - 990L



**ROXANNE 220M**  
Finish: Sand + Biocidal  
Size: Allover  
Repeat: 100 x 100 cm  
2m: 50060124 4m: 50060119



**ROXANNE 330M**  
Finish: Sand + Biocidal  
Size: Allover  
Repeat: 100 x 100 cm  
2m: 50060123 4m: 50060120



**ROXANNE 440M**  
Finish: Sand + Biocidal  
Size: Allover  
Repeat: 100 x 100 cm  
2m: 50060122 4m: 50060121



**ROXANNE 110L**  
Finish: Sand + Biocidal  
Size: Allover  
Repeat: 100 x 100 cm  
2m: 50060129 4m: 50060114



**ROXANNE 610L**  
Finish: Sand + Biocidal  
Size: Allover  
Repeat: 100 x 100 cm  
2m: 50060131 4m: 50060112



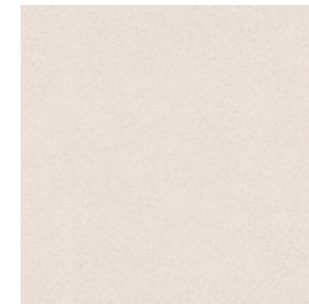
**ROXANNE 660M**  
Finish: Sand + Biocidal  
Size: Allover  
Repeat: 100 x 100 cm  
2m: 50060130 4m: 50060113



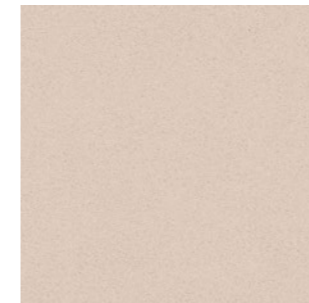
**ROXANNE 690D**  
Finish: Sand + Biocidal  
Size: Allover  
Repeat: 100 x 100 cm  
2m: 50060128 4m: 50060115



**ROXANNE 990L**  
Finish: Sand + Biocidal  
Size: Allover  
Repeat: 100 x 100 cm  
2m: 50060127 4m: 50060116



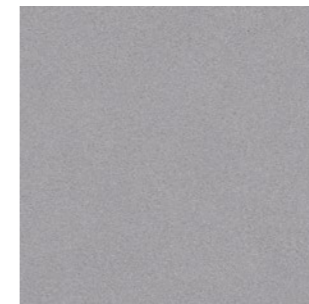
**MIRA 190L**  
 Finish: Sand + Biocidal 2 / 3 / 4 m  
 Size: Allover  
 Repeat: 100 x 100 cm  
 2m: 50039928 3m: 50040595 4m: 50039913



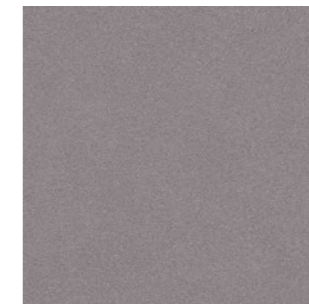
**MIRA 116L**  
 Finish: Sand + Biocidal 2 / 3 / 4 m  
 Size: Allover  
 Repeat: 100 x 100 cm  
 2m: 50039927 3m: 50041041 4m: 50039912



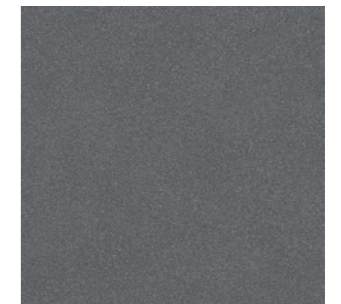
**MIRA 160L**  
 Finish: Sand + Biocidal 2 / 3 / 4 m  
 Size: Allover  
 Repeat: 100 x 100 cm  
 2m: 50039926 3m: 50040594 4m: 50039911



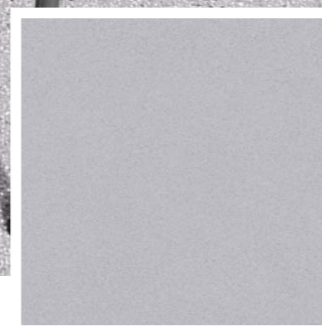
**MIRA 970M**  
 Finish: Sand + Biocidal 2 / 3 / 4 m  
 Size: Allover  
 Repeat: 100 x 100 cm  
 2m: 50039924 3m: 50040602 4m: 50039909



**MIRA 690D**  
 Finish: Sand + Biocidal 2 / 3 / 4 m  
 Size: Allover  
 Repeat: 100 x 100 cm  
 2m: 50039923 3m: 50041040 4m: 50039908



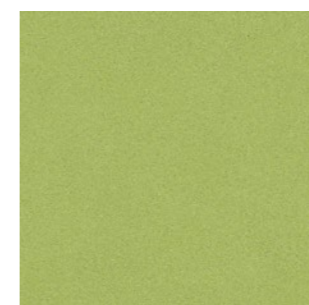
**MIRA 990D**  
 Finish: Sand + Biocidal 2 / 3 / 4 m  
 Size: Allover  
 Repeat: 100 x 100 cm  
 2m: 50039922 3m: 50040603 4m: 50039907



**MIRA 909L**  
 Finish: Sand + Biocidal 2 / 3 / 4 m  
 Size: Allover  
 Repeat: 100 x 100 cm  
 2m: 50039925 3m: 50040601 4m: 50039910



**MIRA 330M**  
 Finish: Sand + Biocidal 2 / 4 m  
 Size: Allover  
 Repeat: 100 x 100 cm  
 2m: 50039915 4m: 50039900



**MIRA 550M**  
 Finish: Sand + Biocidal 2 / 4 m  
 Size: Allover  
 Repeat: 100 x 100 cm  
 2m: 50039917 4m: 50039902



**MIRA 770M**  
 Finish: Sand + Biocidal 2 / 3 / 4 m  
 Size: Allover  
 Repeat: 100 x 100 cm  
 2m: 50039919 3m: 50041038 4m: 50039904



**MIRA 707M**  
 Finish: Sand + Biocidal 2 / 3 / 4 m  
 Size: Allover  
 Repeat: 100 x 100 cm  
 2m: 50039920 3m: 50040600 4m: 50039905

# Phoni-Xtreme



## Applications

- Office
- Education
- Leisure
- Retail
- Hospitality
- Healthcare
- Industry



PACIFIC OAK 696D



**WILLOW**  
Finish: Sand + Biocidal 2 / 4 m  
Plank size: Diff. plank sizes →  
Repeat: 100 x 300 cm →  
2m: 50051243 4m: 50051215



**PACIFIC OAK 139L**  
Finish: Sand + Biocidal 2 / 4 m  
Plank size: Diff. widths x 200 cm →  
Repeat: 200 x 400 cm →  
2m: 50051238 4m: 50051210



**PACIFIC OAK 268M**  
Finish: Sand + Biocidal 2 / 4 m  
Plank size: Diff. widths x 200 cm →  
Repeat: 200 x 400 cm →  
2m: 50051240 4m: 50051212



**PACIFIC OAK 639M**  
Finish: Sand + Biocidal 2 / 4 m  
Plank size: Diff. widths x 200 cm →  
Repeat: 200 x 400 cm →  
2m: 50051241 4m: 50051213



**PACIFIC OAK 699D**  
Finish: Sand + Biocidal 2 / 4 m  
Plank size: Diff. widths x 200 cm →  
Repeat: 200 x 400 cm →  
2m: 50051239 4m: 50051211



**PACIFIC OAK 696D**  
Finish: Sand + Biocidal 2 / 4 m  
Plank size: Diff. widths x 200 cm →  
Repeat: 200 x 400 cm →  
2m: 50051242 4m: 50051214



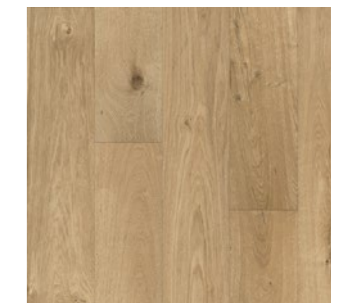
**SUNRISE OAK 191L**  
Finish: Sand + Biocidal 2 / 4 m  
Plank size: 22 x 200 cm →  
Repeat: 200 x 200 cm →  
2m: 50051234 4m: 50051206



**SUNRISE OAK 916M**  
Finish: Sand + Biocidal 2 / 4 m  
Plank size: 22 x 200 cm →  
Repeat: 200 x 200 cm →  
2m: 50051237 4m: 50051209



**SUNRISE OAK 169L**  
Finish: Sand + Biocidal 2 / 4 m  
Plank size: 22 x 200 cm →  
Repeat: 200 x 200 cm →  
2m: 50051235 4m: 50051207



**SUNRISE OAK 619M**  
Finish: Sand + Biocidal 2 / 4 m  
Plank size: 22 x 200 cm →  
Repeat: 200 x 200 cm →  
2m: 50051236 4m: 50051208



TWEED 956D



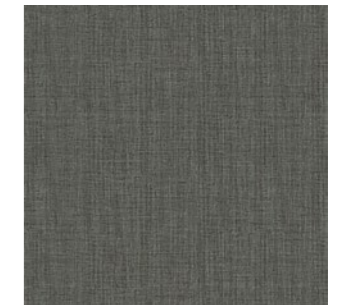
**RUSH**  
Finish: Sand + Biocidal  
Size: Allover  
Repeat: 100 x 100 cm  
2m: 50051244 4m: 50051216



**CLARKSON 327M**  
Finish: Sand + Biocidal  
Size: Allover  
Repeat: 200 x 200 cm  
2m: 50051246 4m: 50051218



**TWEED 696D**  
Finish: Sand + Biocidal  
Size: Allover  
Repeat: 100 x 100 cm  
2m: 50060097 4m: 50060085



**TWEED 956D**  
Finish: Sand + Biocidal  
Size: Allover  
Repeat: 100 x 100 cm  
2m: 50060098 4m: 50060086



**LANNION 319M**  
Finish: Sand + Biocidal  
Size: Allover  
Repeat: 200 x 100 cm  
2m: 50060167 4m: 50060161



**LANNION 669M**  
Finish: Sand + Biocidal  
Size: Allover  
Repeat: 200 x 100 cm  
2m: 50060165 4m: 50060159



**LANNION 966M**  
Finish: Sand + Biocidal  
Size: Allover  
Repeat: 200 x 100 cm  
2m: 50060166 4m: 50060160



LANNION 319M



MONTREAL 900M



**PITTSBURGH 976D**  
Finish: Sand + Biocidal  
Size: Allover  
Repeat: 200 x 150 cm  
2m: 50051250 4m: 50051222



**SARA 769D**  
Finish: Sand + Biocidal  
Size: Allover  
Repeat: 100 x 100 cm  
2m: 50060169 4m: 50060163



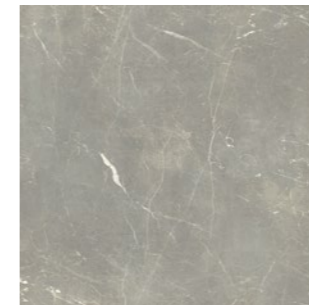
**SARA 699D**  
Finish: Sand + Biocidal  
Size: Allover  
Repeat: 100 x 100 cm  
2m: 50060170 4m: 50060164



**SARA 139M**  
Finish: Sand + Biocidal  
Size: Allover  
Repeat: 100 x 100 cm  
2m: 50060168 4m: 50060162



**MONTREAL 900M**  
Finish: Sand + Biocidal  
Size: Allover  
Repeat: 200 x 150 cm  
2m: 50058551 4m: 50058550



**LAZIO 199M**  
Finish: Sand + Biocidal  
Size: Allover  
Repeat: 200 x 150 cm  
2m: 50051249 4m: 50051221



**TREVISO 617L**  
Finish: Sand + Biocidal  
Size: Allover  
Repeat: 200 x 150 cm  
2m: 50051247 4m: 50051219



SARA 139M

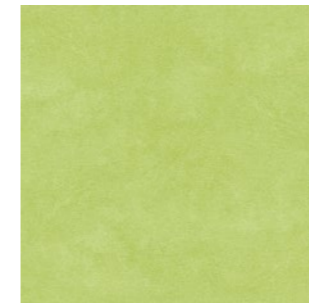


ROXANNE 220M - 330M - 440M - 610L

DIGITAL PRINT



**ROXANNE 770M**  
Finish: Sand + Biocidal  
Size: Allover  
Repeat: 100 x 100 cm  
2m: 50060105 4m: 50060092



**ROXANNE 550M**  
Finish: Sand + Biocidal  
Size: Allover  
Repeat: 100 x 100 cm  
2m: 50060106 4m: 50060093



ROXANNE 220M - 330M - 440M - 610L



**ROXANNE 220M**  
Finish: Sand + Biocidal  
Size: Allover  
Repeat: 100 x 100 cm  
2m: 50060107 4m: 50060094



**ROXANNE 330M**  
Finish: Sand + Biocidal  
Size: Allover  
Repeat: 100 x 100 cm  
2m: 50060108 4m: 50060095



**ROXANNE 440M**  
Finish: Sand + Biocidal  
Size: Allover  
Repeat: 100 x 100 cm  
2m: 50060109 4m: 50060096



**ROXANNE 110L**  
Finish: Sand + Biocidal  
Size: Allover  
Repeat: 100 x 100 cm  
2m: 50060102 4m: 50060089



**ROXANNE 610L**  
Finish: Sand + Biocidal  
Size: Allover  
Repeat: 100 x 100 cm  
2m: 50060099 4m: 50060087



**ROXANNE 660M**  
Finish: Sand + Biocidal  
Size: Allover  
Repeat: 100 x 100 cm  
2m: 50060101 4m: 50060088



**ROXANNE 690D**  
Finish: Sand + Biocidal  
Size: Allover  
Repeat: 100 x 100 cm  
2m: 50060103 4m: 50060090



**ROXANNE 990L**  
Finish: Sand + Biocidal  
Size: Allover  
Repeat: 100 x 100 cm  
2m: 50060104 4m: 50060091

# Ambient



## Applications

Housing  
Office  
Education  
Leisure  
Retail  
Hospitality  
Healthcare  
Industry



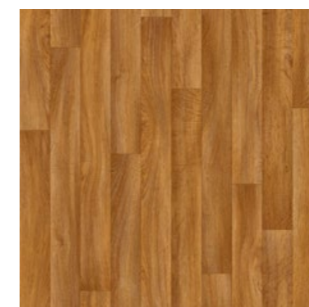
VERO 162L



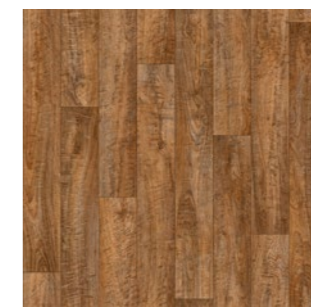
GAMBEL OAK 662M



**HONEY OAK 636M**  
Finish: **Wood + Biocidal** 2 / 3 / 4 m  
Plank size: 7,14 cm x diff. lengths →  
Repeat: 100 x 100 cm →  
2m: 50023209 3m: 50023208 4m: 50023207



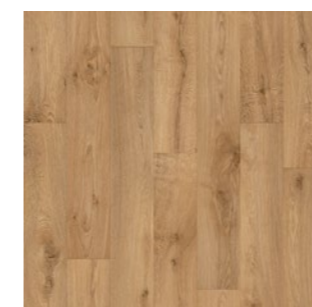
**GOLDEN OAK 016M**  
Finish: **Wood + Biocidal** 2 / 3 / 4 m  
Plank size: 10 x 100 cm →  
Repeat: 100 x 100 cm →  
2m: 50023201 3m: 50023200 4m: 50023199



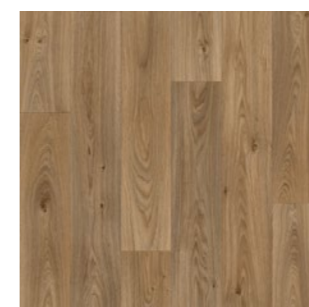
**STOCK OAK 039M**  
Finish: **Wood + Biocidal** 2 / 3 / 4 m  
Plank size: 12,5 x 100 cm →  
Repeat: 100 x 100 cm →  
2m: 50023221 3m: 50023220 4m: 50023219



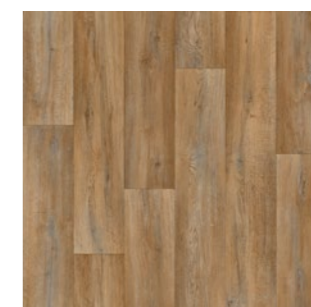
**ANTIQUE OAK 026M**  
Finish: **Wood + Biocidal** 2 / 3 / 4 m  
Plank size: 16,6 x 100 cm →  
Repeat: 100 x 100 cm →  
2m: 50023197 3m: 50023196 4m: 50023195



**VERO 162L**  
Finish: **Wood + Biocidal** 2 / 3 / 4 m  
Plank size: 14,3 x 100 cm →  
Repeat: 100 x 100 cm →  
2m: 50053116 3m: 50053113 4m: 50053110



**GAMBEL OAK 662M**  
Finish: **Wood + Biocidal** 2 / 3 / 4 m  
Plank size: 16,6 x 120 cm →  
Repeat: 100 x 120 cm →  
2m: 50053115 3m: 50053112 4m: 50053111



**SILK OAK 603M**  
Finish: **Wood + Biocidal** 2 / 3 / 4 m  
Plank size: 16,6 x 100 cm →  
Repeat: 100 x 100 cm →  
2m: 50033980 3m: 50033979 4m: 50033978



**SILK OAK 916L**  
Finish: **Wood + Biocidal** 2 / 3 / 4 m  
Plank size: 16,6 x 100 cm →  
Repeat: 100 x 100 cm →  
2m: 50033983 3m: 50033982 4m: 50033981



HAVANNA OAK 991M



**FALCO 996M**  
Finish: **Wood + Biocidal** 2 / 3 / 4 m  
Plank size: 10 x 100 cm →  
Repeat: 100 x 100 cm ↔  
2m: 50053117 3m: 50053114 4m: 50053109



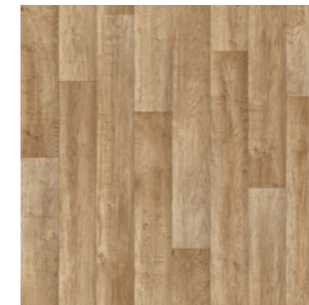
**HAVANNA OAK 991M**  
Finish: **Wood + Biocidal** 2 / 3 / 4 m  
Plank size: 16,6 x 150 cm →  
Repeat: 100 x 150 cm ↔  
2m: 50039163 3m: 50039159 4m: 50039152



**HAVANNA OAK 613M**  
Finish: **Wood + Biocidal** 2 / 3 / 4 m  
Plank size: 16,6 x 150 cm →  
Repeat: 100 x 150 cm ↔  
2m: 50039164 3m: 50039160 4m: 50039153



**HAVANNA OAK 669D**  
Finish: **Wood + Biocidal** 2 / 3 / 4 m  
Plank size: 16,6 x 150 cm →  
Repeat: 100 x 150 cm ↔  
2m: 50039165 3m: 50039161 4m: 50039154



**CHALET OAK 066L**  
Finish: **Wood + Biocidal** 2 / 3 / 4 m  
Plank size: 12,5 x 100 cm →  
Repeat: 100 x 100 cm ↔  
2m: 50033974 3m: 50033973 4m: 50033972



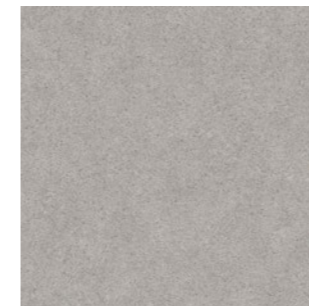
**TEREZA 639M**  
Finish: **Biocidal** 2 / 3 / 4 m  
Size: Allover →  
Repeat: 100 x 100 cm ↔  
2m: 50053276 3m: 50053271 4m: 50053260



**TEREZA 368M**  
Finish: **Biocidal** 2 / 3 / 4 m  
Size: Allover →  
Repeat: 100 x 100 cm ↔  
2m: 50053272 3m: 50053266 4m: 50053261



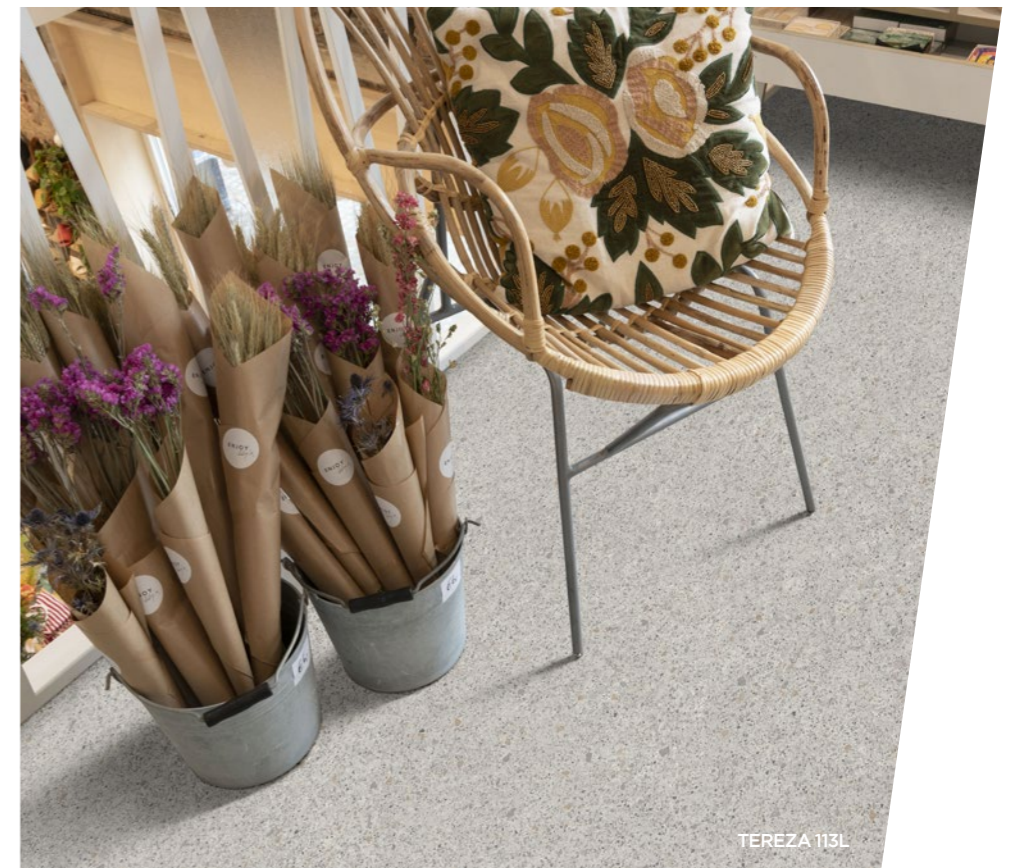
**TEREZA 113L**  
Finish: **Biocidal** 2 / 3 / 4 m  
Size: Allover →  
Repeat: 100 x 100 cm ↔  
2m: 50053273 3m: 50053263 4m: 50053257



**TEREZA 196M**  
Finish: **Biocidal** 2 / 3 / 4 m  
Size: Allover →  
Repeat: 100 x 100 cm ↔  
2m: 50053274 3m: 50053264 4m: 50053258



**TEREZA 976M**  
Finish: **Biocidal** 2 / 3 / 4 m  
Size: Allover →  
Repeat: 100 x 100 cm ↔  
2m: 50053275 3m: 50053265 4m: 50053259



TEREZA 113L

# Titan



## Applications

- Housing
- Office
- Education
- Leisure
- Retail
- Hospitality
- Healthcare
- Industry



WILLOW OAK 969M



**WILLOW OAK 602L**  
Finish: **Wood + Biocidal** 2/3/4 m  
Plank size: 14,3 x 100 cm →  
Repeat: 100 x 100 cm →  
2m: 50059642 3m: 50059639 4m: 50059636



**WILLOW OAK 662M**  
Finish: **Wood + Biocidal** 2/3/4 m  
Plank size: 14,3 x 100 cm →  
Repeat: 100 x 100 cm →  
2m: 50059643 3m: 50059640 4m: 50059637



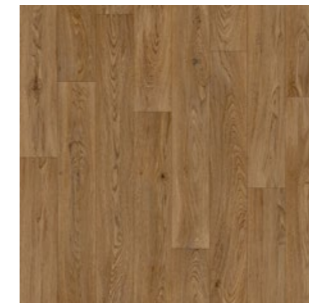
**WILLOW OAK 969M**  
Finish: **Wood + Biocidal** 2/3/4 m  
Plank size: 14,3 x 100 cm →  
Repeat: 100 x 100 cm →  
2m: 50059644 3m: 50059641 4m: 50059638



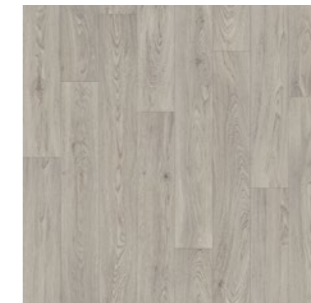
**TOLEDO 6182**  
Finish: **Wood + Biocidal** 2/3/4 m  
Plank size: 16,6 x 100 cm →  
Repeat: 100 x 100 cm →  
2m: 50059572 3m: 50059573 4m: 50059574



**SUMMER OAK 026L**  
Finish: **Wood + Biocidal** 2/3/4 m  
Plank size: 12,5 x 100 cm →  
Repeat: 200 x 100 cm →  
2m: 50059645 3m: 50059624 4m: 50059612



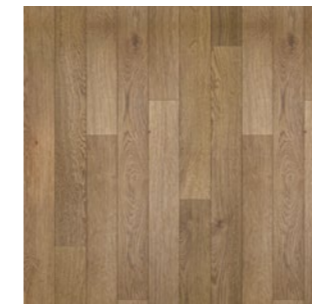
**SUMMER OAK 664D**  
Finish: **Wood + Biocidal** 2/3/4 m  
Plank size: 12,5 x 100 cm →  
Repeat: 200 x 100 cm →  
2m: 50059646 3m: 50059625 4m: 50059613



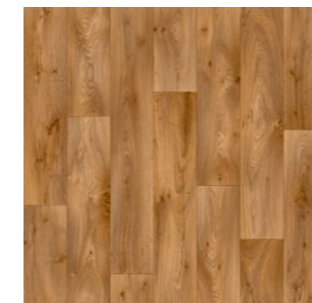
**SUMMER OAK 990M**  
Finish: **Wood + Biocidal** 2/3/4 m  
Plank size: 12,5 x 100 cm →  
Repeat: 200 x 100 cm →  
2m: 50059647 3m: 50059626 4m: 50059614



**FALCO 909S**  
Finish: **Wood + Biocidal** 2/3/4 m  
Plank size: 10 x 100 cm →  
Repeat: 100 x 100 cm →  
2m: 50059566 3m: 50059567 4m: 50059568



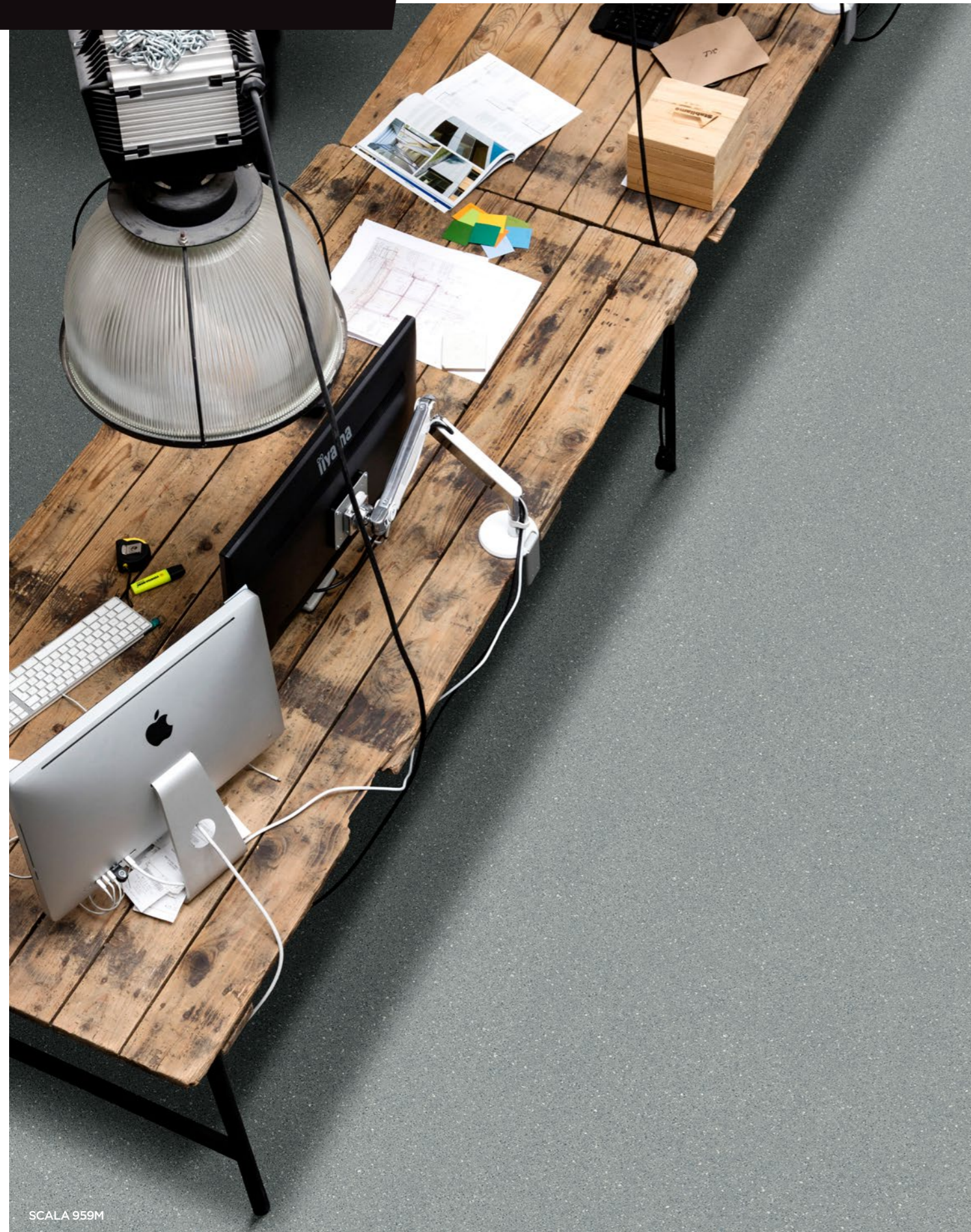
**FALCO 6259**  
Finish: **Wood + Biocidal** 2/3/4 m  
Plank size: 10 x 100 cm →  
Repeat: 100 x 100 cm →  
2m: 50059563 3m: 50059564 4m: 50059565



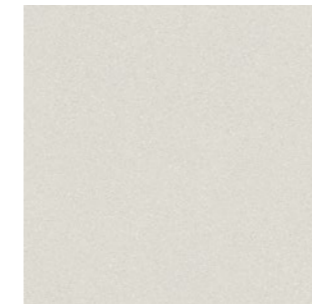
**CAMEO 1000**  
Finish: **Wood + Biocidal** 2/3/4 m  
Plank size: 14,2 x 100 cm →  
Repeat: 100 x 100 cm →  
2m: 50059560 3m: 50059561 4m: 50059562



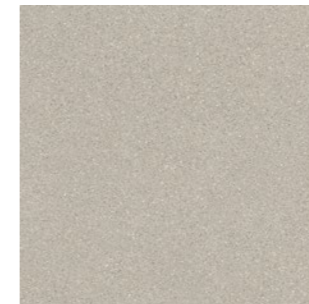
SUMMER OAK 026L



SCALA 959M



**SCALA 009L**  
Finish: Sand + Biocidal 2 / 3 / 4 m  
Size: Allover →  
Repeat: 100 x 100 cm ←  
2m: 50059649 3m: 50059628 4m: 50059616



**SCALA 090L**  
Finish: Sand + Biocidal 2 / 3 / 4 m  
Size: Allover →  
Repeat: 100 x 100 cm ←  
2m: 50059652 3m: 50059631 4m: 50059619



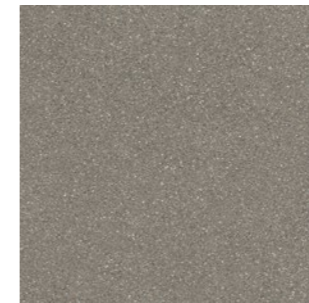
**SCALA 239L**  
Finish: Sand + Biocidal 2 / 3 / 4 m  
Size: Allover →  
Repeat: 100 x 100 cm ←  
2m: 50059653 3m: 50059632 4m: 50059620



**SCALA 339L**  
Finish: Sand + Biocidal 2 / 3 / 4 m  
Size: Allover →  
Repeat: 100 x 100 cm ←  
2m: 50059654 3m: 50059633 4m: 50059621



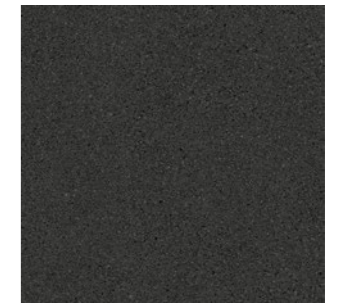
**SCALA 909M**  
Finish: Sand + Biocidal 2 / 3 / 4 m  
Size: Allover →  
Repeat: 100 x 100 cm ←  
2m: 50059651 3m: 50059630 4m: 50059618



**SCALA 900D**  
Finish: Sand + Biocidal 2 / 3 / 4 m  
Size: Allover →  
Repeat: 100 x 100 cm ←  
2m: 50059650 3m: 50059629 4m: 50059617



**SCALA 959M**  
Finish: Sand + Biocidal 2 / 3 / 4 m  
Size: Allover →  
Repeat: 100 x 100 cm ←  
2m: 50059655 3m: 50059634 4m: 50059622



**SCALA 999E**  
Finish: Sand + Biocidal 2 / 3 / 4 m  
Size: Allover →  
Repeat: 100 x 100 cm ←  
2m: 50059648 3m: 50059627 4m: 50059615



**PATIO 967L**  
Finish: Sand + Biocidal 2 / 3 / 4 m  
Size: Allover →  
Repeat: 100 x 100 cm ←  
2m: 50059569 3m: 50059570 4m: 50059571



**PATIO 977D**  
Finish: Sand + Biocidal 2 / 3 / 4 m  
Size: Allover →  
Repeat: 100 x 100 cm ←  
2m: 50059656 3m: 50059635 4m: 50059623



SCALA 999E

# Techno-Tex



## Applications

Housing

Office

Education

Leisure

Retail

Hospitality

Healthcare

Industry



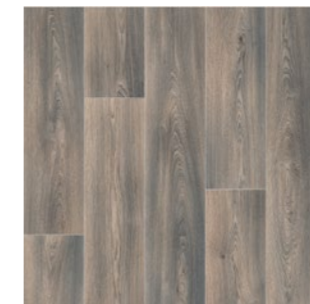
AVEO 960D



DIANA WOOD 679D



**WARM OAK 289M**  
Finish: Sand + Antislip 2 / 3 / 4 m  
Plank size: 20 x 150 cm →  
Repeat: 100 x 150 cm →  
2m: 50064384 3m: 50064381 4m: 50064382



**WARM OAK 769M**  
Finish: Sand + Antislip 2 / 3 / 4 m  
Plank size: 20 x 150 cm →  
Repeat: 100 x 150 cm →  
2m: 50064385 3m: 50064379 4m: 50064380



**AVEO 690D**  
Finish: Sand + Antislip 2 / 3 / 4 m  
Plank size: 10 x 100 cm →  
Repeat: 100 x 100 cm →  
2m: 50064387 3m: 50064375 4m: 50064376



**AVEO 960D**  
Finish: Sand + Antislip 2 / 3 / 4 m  
Plank size: 10 x 100 cm →  
Repeat: 100 x 100 cm →  
2m: 50064386 3m: 50064377 4m: 50064378



**DIANA WOOD 679D**  
Finish: Sand + Antislip 2 / 3 / 4 m  
Plank size: 37,5 x 12,5 cm →  
Repeat: 100 x 150 cm →  
2m: 50057839 3m: 50057732 4m: 50057705



**DIANA WOOD 176L**  
Finish: Sand + Antislip 2 / 3 / 4 m  
Plank size: 37,5 x 12,5 cm →  
Repeat: 100 x 150 cm →  
2m: 50057860 3m: 50057730 4m: 50057702



**TEX  
BVC**  
TEXTILE  
BACKING



SARA 778D



**SARA 161L**  
Finish: **Sand + Antislip** 2 / 3 / 4 m  
Size: Allover →  
Repeat: 100 x 100 cm ←  
2m: 50057855 3m: 50057736 4m: 50057716



**SARA 996L**  
Finish: **Sand + Antislip** 2 / 3 / 4 m  
Size: Allover →  
Repeat: 100 x 100 cm ←  
2m: 50057844 3m: 50057760 4m: 50057727



**SARA 979M**  
Finish: **Sand + Antislip** 2 / 3 / 4 m  
Size: Allover →  
Repeat: 100 x 100 cm ←  
2m: 50057852 3m: 50057738 4m: 50057720



**SARA 999D**  
Finish: **Sand + Antislip** 2 / 3 / 4 m  
Size: Allover →  
Repeat: 100 x 100 cm ←  
2m: 50058323 3m: 50058322 4m: 50058321



**SARA 778D**  
Finish: **Sand + Antislip** 2 / 3 / 4 m  
Size: Allover →  
Repeat: 100 x 100 cm ←  
2m: 50057847 3m: 50057751 4m: 50057726



**SARA 799D**  
Finish: **Sand + Antislip** 2 / 3 / 4 m  
Size: Allover →  
Repeat: 100 x 100 cm ←  
2m: 50057849 3m: 50057744 4m: 50057723



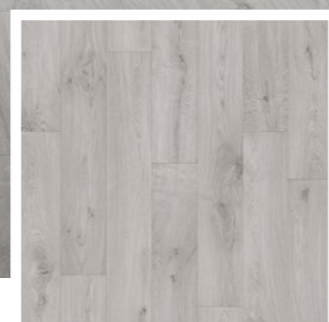
SARA 161L

# Expoline



## Applications

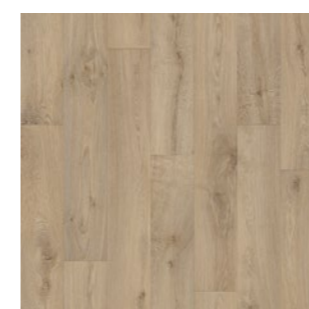
- Housing
- Office
- Education
- Retail
- Hospitality



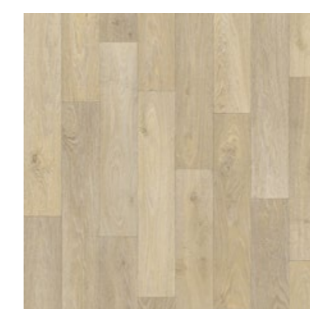
**VERO 997L**  
 Finish: **Wood + Biocidal** 2/3/4 m  
 Plank size: 14,3 x 100 cm →  
 Repeat: 100 x 100 cm →  
 2m: 50054030 3m: 50054028 4m: 50054025



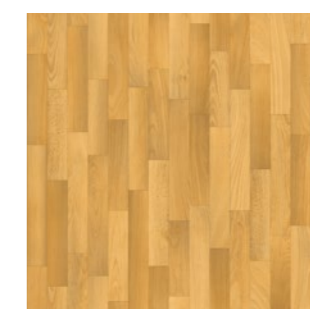
BEECH PLANK 062S



**VERO 296M**  
 Finish: **Wood + Biocidal** 2/3/4 m  
 Plank size: 14,3 x 100 cm →  
 Repeat: 100 x 100 cm →  
 2m: 50054031 3m: 50054029 4m: 50054024



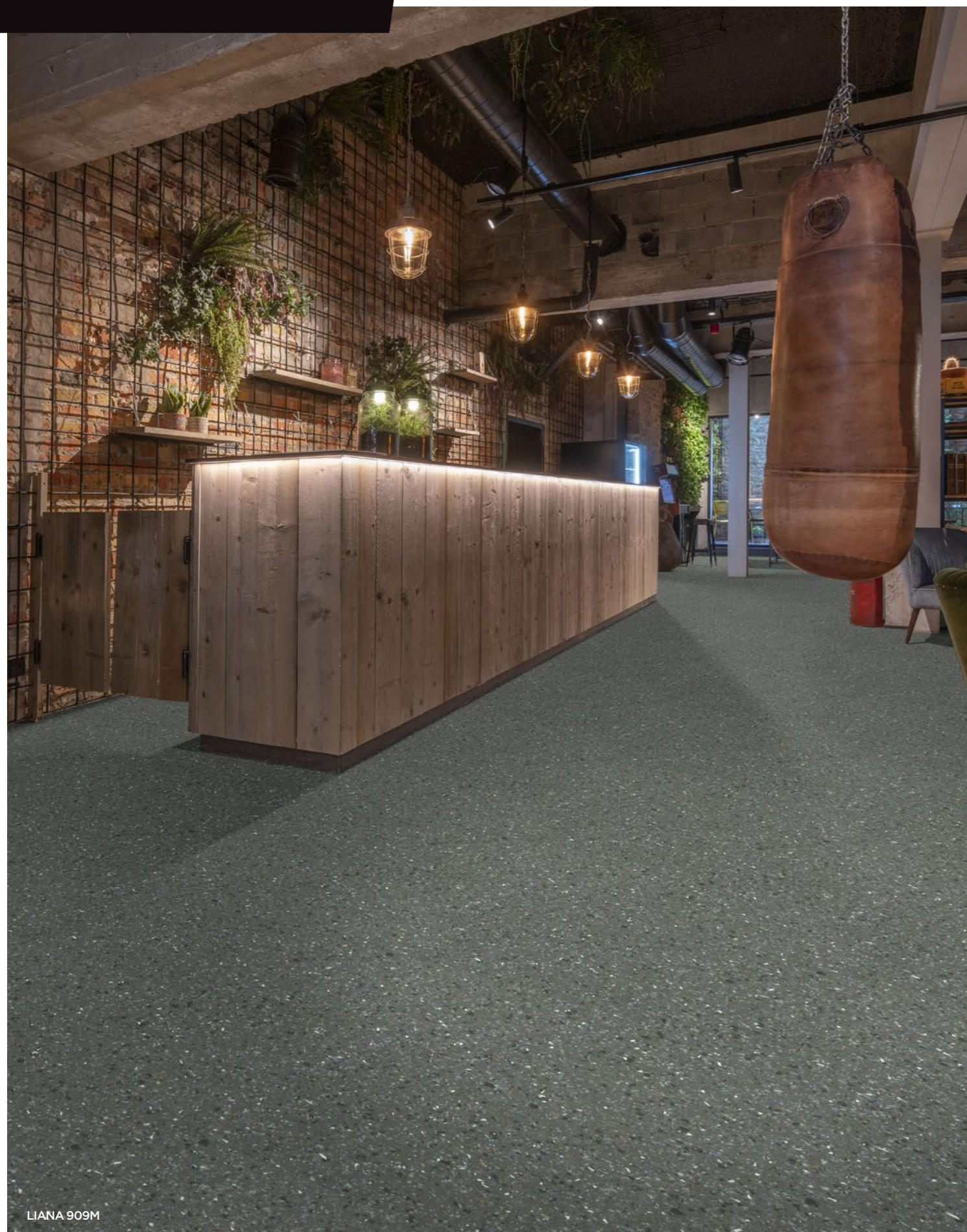
**FUMED OAK 160M**  
 Finish: **Wood + Biocidal** 2/3/4 m  
 Plank size: 12,5 cm x diff. lengths →  
 Repeat: 100 x 150 cm →  
 2m: 50035197 3m: 50035198 4m: 50035095



**BEECH PLANK 062S**  
 Finish: **Wood + Biocidal** 2/3/4 m  
 Plank size: 6,6 cm x diff. lengths →  
 Repeat: 100 x 100 cm →  
 2m: 50035106 3m: 50035107 4m: 50035108



**GOLDEN OAK 036M**  
 Finish: **Wood + Biocidal** 2/3/4 m  
 Plank size: 10 x 100 cm →  
 Repeat: 100 x 100 cm →  
 2m: 50035109 3m: 50035110 4m: 50035111



LIANA 909M



LIANA 919M



**LIANA 009L**  
Finish: **Tile + Biocidal** 2 / 3 / 4 m  
Size: Allover  
Repeat: 100 x 100 cm  
2m: 50035201 3m: 50035202 4m: 50035097



**LIANA 663L**  
Finish: **Tile + Biocidal** 2 / 3 / 4 m  
Size: Allover  
Repeat: 100 x 100 cm  
2m: 50035229 3m: 50035231 4m: 50035100



**LIANA 919M**  
Finish: **Tile + Biocidal** 2 / 3 / 4 m  
Size: Allover  
Repeat: 100 x 100 cm  
2m: 50035243 3m: 50035244 4m: 50035104



**LIANA 797D**  
Finish: **Tile + Biocidal** 2 / 3 / 4 m  
Size: Allover  
Repeat: 100 x 100 cm  
2m: 50035235 3m: 50035237 4m: 50035103



**LIANA 909M**  
Finish: **Tile + Biocidal** 2 / 3 / 4 m  
Size: Allover  
Repeat: 100 x 100 cm  
2m: 50035240 3m: 50035241 4m: 50035102



**LIANA 999D**  
Finish: **Tile + Biocidal** 2 / 3 / 4 m  
Size: Allover  
Repeat: 100 x 100 cm  
2m: 50035242 3m: 50035246 4m: 50035101



**LIANA 989E**  
Finish: **Tile + Biocidal** 2 / 3 / 4 m  
Size: Allover  
Repeat: 100 x 100 cm  
2m: 50059446 3m: 50059445 4m: 50059443

# Phonitec



## Applications

Housing

Office

Education

Retail

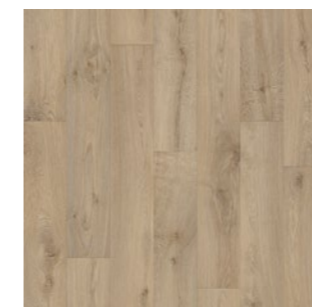
Hospitality



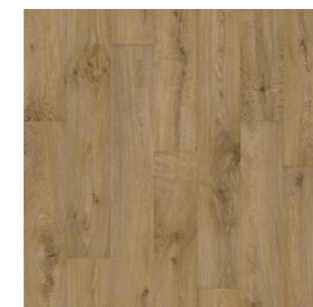
**SUMMER OAK 199M**  
 Finish: **Sand + Biocidal** 2/3/4 m  
 Plank size: 12,5 x 100 cm →  
 Repeat: 200 x 100 cm →  
 2m: 50051404 3m: 50051373 4m: 50051341



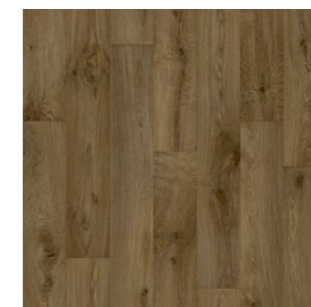
VERO 696D



**VERO 296M**  
 Finish: **Sand + Biocidal** 2/3/4 m  
 Plank size: 14,3 x 100 cm →  
 Repeat: 100 x 100 cm →  
 2m: 50051405 3m: 50051374 4m: 50051342



**VERO 363M**  
 Finish: **Sand + Biocidal** 2/3/4 m  
 Plank size: 14,3 x 100 cm →  
 Repeat: 100 x 100 cm →  
 2m: 50051406 3m: 50051375 4m: 50051343



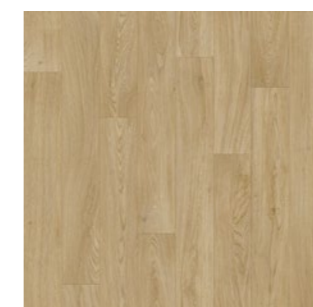
**VERO 696D**  
 Finish: **Sand + Biocidal** 2/3/4 m  
 Plank size: 14,3 x 100 cm →  
 Repeat: 100 x 100 cm →  
 2m: 50051407 3m: 50051376 4m: 50051344



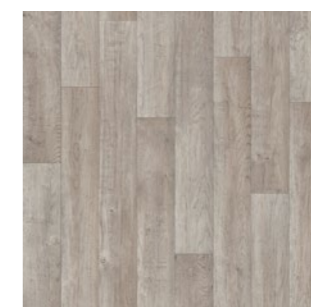
**VERO 961M**  
 Finish: **Sand + Biocidal** 2/3/4 m  
 Plank size: 14,3 x 100 cm →  
 Repeat: 100 x 100 cm →  
 2m: 50051408 3m: 50051378 4m: 50051345



**SUMMER OAK 262M**  
 Finish: **Sand + Biocidal** 2/3/4 m  
 Plank size: 12,5 x 100 cm →  
 Repeat: 200 x 100 cm →  
 2m: 50051403 3m: 50051372 4m: 50051340



**SUMMER OAK 633M**  
 Finish: **Sand + Biocidal** 2/3/4 m  
 Plank size: 12,5 x 100 cm →  
 Repeat: 200 x 100 cm →  
 2m: 50051402 3m: 50051371 4m: 50051339



**CHALET OAK 646D**  
 Finish: **Wood + Biocidal** 2/3/4 m  
 Plank size: 12,5 x 100 cm →  
 Repeat: 100 x 100 cm →  
 2m: 50042752 3m: 50042745 4m: 50042728



**CHALET OAK 699D**  
 Finish: **Sand + Biocidal** 2/3/4 m  
 Plank size: 12,5 x 100 cm →  
 Repeat: 100 x 100 cm →  
 2m: 50051409 3m: 50051379 4m: 50051346



LANNION 669M



**LANNION 319M**  
Finish: Sand + Biocidal 2 / 3 / 4 m  
Size: Allover →  
Repeat: 200 x 100 cm  
2m:50060240 3m:50060244 4m:50060236



**LANNION 669M**  
Finish: Sand + Biocidal 2 / 3 / 4 m  
Size: Allover →  
Repeat: 200 x 100 cm  
2m:50060241 3m:50060250 4m:50060237



**TWEED 629M**  
Finish: Sand + Biocidal 2 / 3 / 4 m  
Size: Allover →  
Repeat: 100 x 100 cm  
2m:50060243 3m:50060248 4m:50060239



**TWEED 989M**  
Finish: Sand + Biocidal 2 / 3 / 4 m  
Size: Allover →  
Repeat: 100 x 100 cm  
2m:50060242 3m:50060249 4m:50060238



**MONTREAL 191L**  
Finish: Sand + Biocidal 2 / 3 / 4 m  
Size: Allover →  
Repeat: 200 x 150 cm  
2m: 50051410 3m: 50051380 4m: 50051347



**MONTREAL 900M**  
Finish: Sand + Biocidal 2 / 3 / 4 m  
Size: Allover →  
Repeat: 200 x 150 cm  
2m: 50051415 3m: 50051414 4m: 50051350



**MONTREAL 990M**  
Finish: Sand + Biocidal 2 / 3 / 4 m  
Size: Allover →  
Repeat: 200 x 150 cm  
2m:50051411 3m: 50051381 4m: 50051348



**CARCASSONNE 472M**  
Finish: Sand + Biocidal 2 / 3 / 4 m  
Tile size: 20 x 20 cm →  
Repeat: 200 x 100 cm →  
2m: 50051397 3m: 50051366 4m: 50051334



MONTREAL 990M

# Sonipro



VERO 363M

## Applications

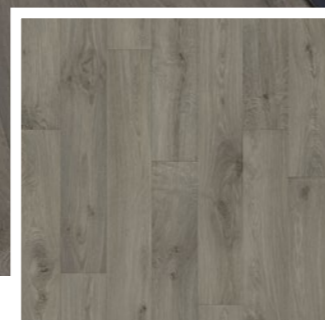
Housing

Office

Education

Retail

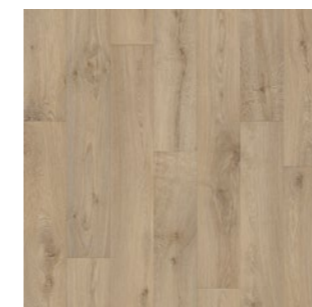
Hospitality



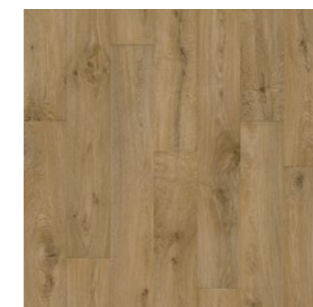
**VERO 961M**  
 Finish: **Sand + Biocidal** 2 / 3 / 4 m  
 Plank size: 14,3 x 100 cm →  
 Repeat: 100 x 100 cm →  
 2m: 50051393 3m: 50051362 4m: 50051330



SUMMER OAK 262M



**VERO 296M**  
 Finish: **Sand + Biocidal** 2 / 3 / 4 m  
 Plank size: 14,3 x 100 cm →  
 Repeat: 100 x 100 cm →  
 2m: 50051390 3m: 50051359 4m: 50051327



**VERO 363M**  
 Finish: **Sand + Biocidal** 2 / 3 / 4 m  
 Plank size: 14,3 x 100 cm →  
 Repeat: 100 x 100 cm →  
 2m: 50051391 3m: 50051360 4m: 50051328



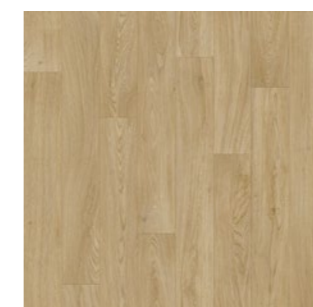
**VERO 696D**  
 Finish: **Sand + Biocidal** 2 / 3 / 4 m  
 Plank size: 14,3 x 100 cm →  
 Repeat: 100 x 100 cm →  
 2m: 50051392 3m: 50051361 4m: 50051329



**SUMMER OAK 199M**  
 Finish: **Sand + Biocidal** 2 / 3 / 4 m  
 Plank size: 12,5 x 100 cm →  
 Repeat: 200 x 100 cm →  
 2m: 50051389 3m: 50051358 4m: 50051326



**SUMMER OAK 262M**  
 Finish: **Sand + Biocidal** 2 / 3 / 4 m  
 Plank size: 12,5 x 100 cm →  
 Repeat: 200 x 100 cm →  
 2m: 50051388 3m: 50051357 4m: 50051325



**SUMMER OAK 633M**  
 Finish: **Sand + Biocidal** 2 / 3 / 4 m  
 Plank size: 12,5 x 100 cm →  
 Repeat: 200 x 100 cm →  
 2m: 50051387 3m: 50051356 4m: 50051324



**CHALET OAK 699D**  
 Finish: **Wood + Biocidal** 2 / 3 / 4 m  
 Plank size: 12,5 x 100 cm →  
 Repeat: 100 x 100 cm →  
 2m: 50051394 3m: 50051363 4m: 50051331



**CHALET OAK 646D**  
 Finish: **Wood + Biocidal** 2 / 3 / 4 m  
 Plank size: 12,5 x 100 cm →  
 Repeat: 100 x 100 cm →  
 2m: 50032993 3m: 50032899 4m: 50032894



TWEED 629M



**LANNION 319M**  
Finish: Sand + Biocidal 2 / 3 / 4 m  
Size: Allover →  
Repeat: 200 x 100 cm →  
2m: 50060202 3m: 50060195 4m: 50060187



**LANNION 669M**  
Finish: Sand + Biocidal 2 / 3 / 4 m  
Size: Allover →  
Repeat: 200 x 100 cm →  
2m: 50060206 3m: 50060196 4m: 50060188



**TWEED 629M**  
Finish: Sand + Biocidal 2 / 3 / 4 m  
Size: Allover →  
Repeat: 100 x 100 cm ←  
2m: 50060204 3m: 50060197 4m: 50060190



**TWEED 989M**  
Finish: Sand + Biocidal 2 / 3 / 4 m  
Size: Allover →  
Repeat: 100 x 100 cm ←  
2m: 50060205 3m: 50060201 4m: 50060189



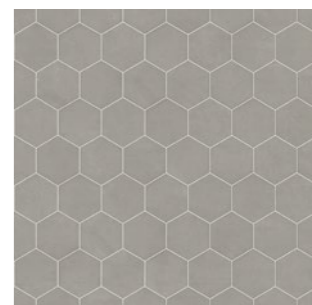
**MONTREAL 191L**  
Finish: Sand + Biocidal 2 / 3 / 4 m  
Size: Allover →  
Repeat: 200 x 150 cm →  
2m: 50051395 3m: 50051364 4m: 50051332



**MONTREAL 900M**  
Finish: Sand + Biocidal 2 / 3 / 4 m  
Size: Allover →  
Repeat: 200 x 150 cm →  
2m: 50051413 3m: 50051412 4m: 50051349



**MONTREAL 990M**  
Finish: Sand + Biocidal 2 / 3 / 4 m  
Size: Allover →  
Repeat: 200 x 150 cm →  
2m: 50051396 3m: 50051365 4m: 50051333



**NÎMES 909L**  
Finish: Sand + Biocidal 2 / 3 / 4 m  
Tile size: 14,2 x 16,5 cm →  
Repeat: 200 x 100 cm →  
2m: 50051385 3m: 50051354 4m: 50051322



NÎMES 909L



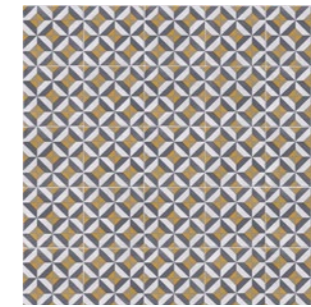
CARCASSONNE 472M



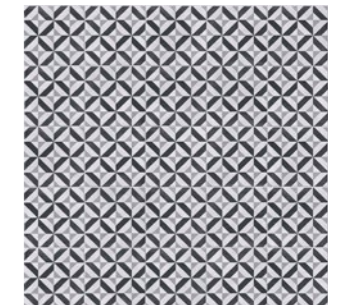
**SANTANO 746M**  
Finish: Sand + Biocidal 2 / 3 / 4 m  
Tile size: 16,6 x 16,6 cm →  
Repeat: 100 x 100 cm  
2m: 50053911 3m: 50053909 4m: 50053904



**SANTANO 999L**  
Finish: Sand + Biocidal 2 / 3 / 4 m  
Tile size: 16,6 x 16,6 cm →  
Repeat: 100 x 100 cm  
2m: 50053910 3m: 50053908 4m: 50053905



**WINSLOW 290M**  
Finish: Sand + Biocidal 2 / 3 / 4 m  
Tile size: 20 x 20 cm →  
Repeat: 200 x 100 cm  
2m: 50058215 3m: 50058216 4m: 50058040



**WINSLOW 909M**  
Finish: Sand + Biocidal 2 / 3 / 4 m  
Tile size: 20 x 20 cm →  
Repeat: 200 x 100 cm  
2m: 50058217 3m: 50058218 4m: 50058041



**CARCASSONNE 472M**  
Finish: Sand + Biocidal 2 / 3 / 4 m  
Tile size: 20 x 20 cm →  
Repeat: 200 x 100 cm  
2m: 50051382 3m: 50051351 4m: 50051319



**CARCASSONNE 529M**  
Finish: Sand + Biocidal 2 / 3 / 4 m  
Tile size: 20 x 20 cm →  
Repeat: 200 x 100 cm  
2m: 50051383 3m: 50051352 4m: 50051320



**HAMILTON 127M**  
Finish: Sand + Biocidal 2 / 3 / 4 m  
Tile size: 25 x 25 cm →  
Repeat: 200 x 100 cm  
2m: 50051384 3m: 50051353 4m: 50051321



**SWINDON 139L**  
Finish: Sand + Biocidal 2 / 3 / 4 m  
Size: Allover →  
Repeat: 200 x 100 cm  
2m: 50051386 3m: 50051355 4m: 50051323



SWINDON 139L

# Resitex



LAUREL OAK 116L

## Applications

Housing

Office

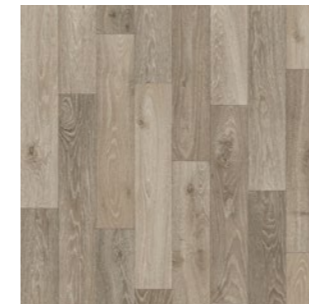
Education

Retail

Hospitality



**TEX  
BVC**  
TEXTILE  
BACKING



**FUMED OAK 966M**  
Finish: **Sand + Matt** 2 / 4 m  
Plank size: 12,5 cm x diff. lengths →  
Repeat: 100 x 150 cm →  
**2m: 50040103 4m: 50040102**



**WHITE OAK 979L**  
Finish: **Sand + Matt** 2 / 4 m  
Plank size: 12,5 x 100 cm →  
Repeat: 100 x 100 cm →  
**2m: 50041494 4m: 50041493**



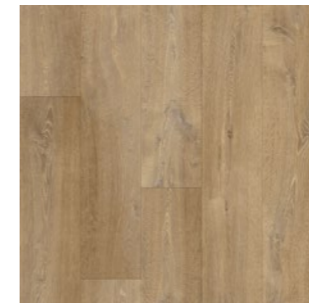
**CROUCH OAK 170M**  
Finish: **Sand + Matt** 2 / 4 m  
Plank size: 20 x 150 cm →  
Repeat: 200 x 150 cm →  
**2m: 50048972 4m: 50048973**



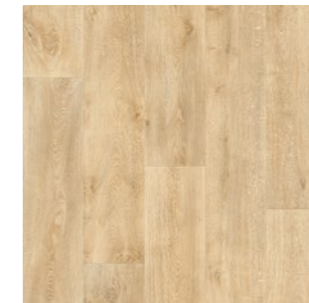
**CROUCH OAK 699D**  
Finish: **Sand + Matt** 2 / 4 m  
Plank size: 20 x 150 cm →  
Repeat: 200 x 150 cm →  
**2m: 50048976 4m: 50048977**



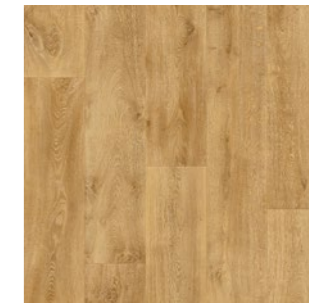
**CROUCH OAK 126M**  
Finish: **Sand + Matt** 2 / 4 m  
Plank size: 20 x 150 cm →  
Repeat: 200 x 150 cm →  
**2m: 50048970 4m: 50048971**



**CROUCH OAK 614M**  
Finish: **Sand + Matt** 2 / 4 m  
Plank size: 20 x 150 cm →  
Repeat: 200 x 150 cm →  
**2m: 50048974 4m: 50048975**



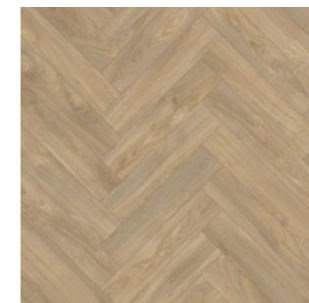
**TEXAS OAK 162L**  
Finish: **Sand + Matt** 2 / 4 m  
Plank size: 20 x 150 cm →  
Repeat: 100 x 150 cm →  
**2m: 50041492 4m: 50041491**



**TEXAS OAK 136L**  
Finish: **Sand + Matt** 2 / 4 m  
Plank size: 20 x 150 cm →  
Repeat: 100 x 150 cm →  
**2m: 50048990 4m: 50048991**



**OAKLAND 196L**  
Finish: **Sand + Matt** 2 / 4 m  
Plank size: 16,6 x 120 cm →  
Repeat: 100 x 120 cm →  
**2m: 50048994 4m: 50048995**



**LAUREL OAK 116L**  
Finish: **Sand + Matt** 2 / 4 m  
Plank size: 10 x 47 cm →  
Repeat: 200 x 100 cm →  
**2m: 50048992 4m: 50048993**



CROUCH OAK 170M



**VALLEY OAK 939L**  
Finish: **Sand + Matt** 2 / 4 m  
Plank size: 20 x 150 cm →  
Repeat: 100 x 150 cm →  
**2m: 50040107 4m: 50040106**



NOTTINGHAM 119M



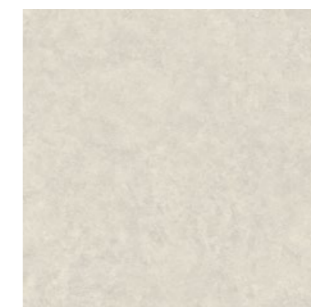
ROCKINGHAM 790M



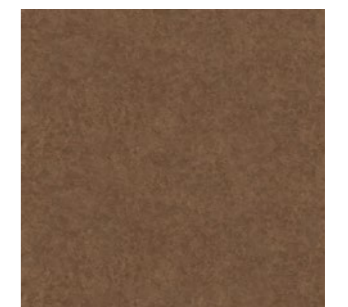
**NOTTINGHAM 971M**  
Finish: Sand + Matt  
Size: Allover  
Repeat: 100 x 100 cm  
2m: 50048984 4m: 50048985



**NOTTINGHAM 119M**  
Finish: Sand + Matt  
Size: Allover  
Repeat: 100 x 100 cm  
2m: 50048982 4m: 50048983



**ELBURG 071L**  
Finish: Sand + Matt  
Size: Allover  
Repeat: 200 x 100 cm  
2m: 50048978 4m: 50048979



**ELBURG 646M**  
Finish: Sand + Matt  
Size: Allover  
Repeat: 200 x 100 cm  
2m: 50048980 4m: 50048981



**PRESTON 090L**  
Finish: Sand + Matt  
Tile size: 25 x 50 cm  
Repeat: 200 x 100 cm  
2m: 50048986 4m: 50048987



**ROCKINGHAM 790M**  
Finish: Sand + Matt  
Size: Allover  
Repeat: 200 x 150 cm  
2m: 50048988 4m: 50048989



**PITTSBURGH 969D**  
Finish: Sand + Matt  
Size: Allover  
Repeat: 200 x 150 cm  
2m: 50041498 4m: 50041497

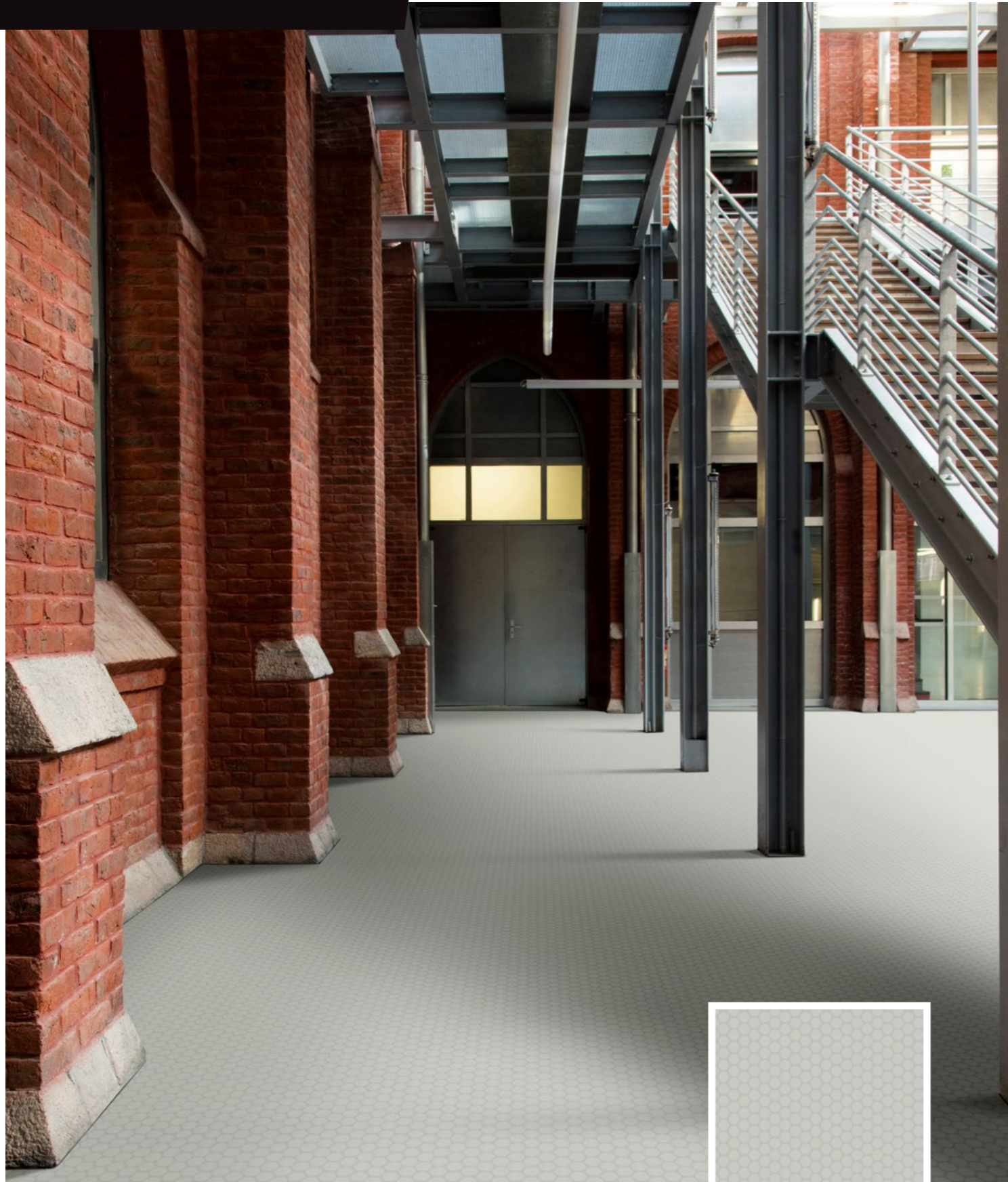
# Fairplay



## Applications

Fairs

Events



SOLID 910M



**SOLID 000S**  
Finish: Sand + Matt  
Size: Allover  
Repeat: 100 x 100 cm  
2m: 50046387 4m: 50046388



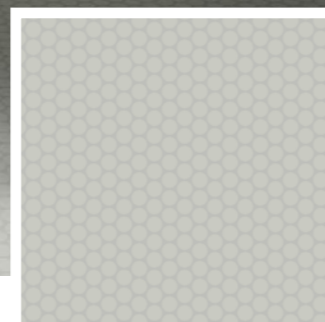
**SOLID 434M**  
Finish: Sand + Matt  
Size: Allover  
Repeat: 100 x 100 cm  
2m: 50046357 4m: 50046356



**SOLID 707M**  
Finish: Sand + Matt  
Size: Allover  
Repeat: 100 x 100 cm  
2m: 50046211 4m: 50046208



**SOLID 910M**  
Finish: Sand + Matt  
Size: Allover  
Repeat: 100 x 100 cm  
2m: 50046213 4m: 50046210



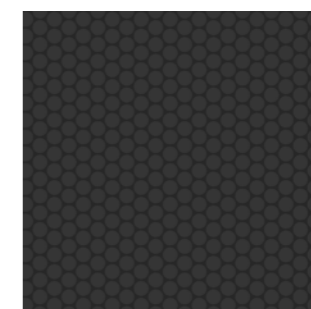
**SOLID DISC 099L**  
Finish: Sand + Matt  
Size: Allover  
Repeat: 100 x 100 cm  
2m: 50046391 4m: 50046392



**SOLID 919D**  
Finish: Sand + Matt  
Size: Allover  
Repeat: 100 x 100 cm  
2m: 50046212 4m: 50046209



**SOLID 999E**  
Finish: Sand + Matt  
Size: Allover  
Repeat: 100 x 100 cm  
2m: 50046389 4m: 50046390



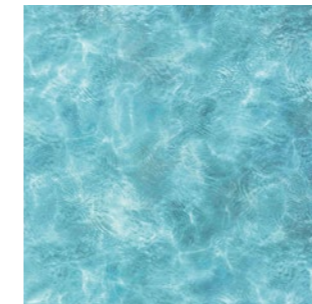
**SOLID DISC 909D**  
Finish: Sand + Matt  
Size: Allover  
Repeat: 100 x 100 cm  
2m: 50046393 4m: 50046394



**ZINC 993M**  
Finish: Sand + Matt  
Size: Allover  
Repeat: 100 x 100 cm  
2m: 50046542 3m: 50046543 4m: 50046544



COBBLE



**AQUA**  
Finish: Sand + Matt  
Size: Allover  
Repeat: 400 x 300 cm  
2m: 50047057 4m: 50046930



**COBBLE**  
Finish: Sand + Matt  
Size: Allover  
Repeat: 100 x 100 cm  
2m: 50047059 4m: 50047051



**DAISIES**  
Finish: Sand + Matt  
Size: Allover  
Repeat: 150 x 150 cm  
2m: 50047060 4m: 50047052



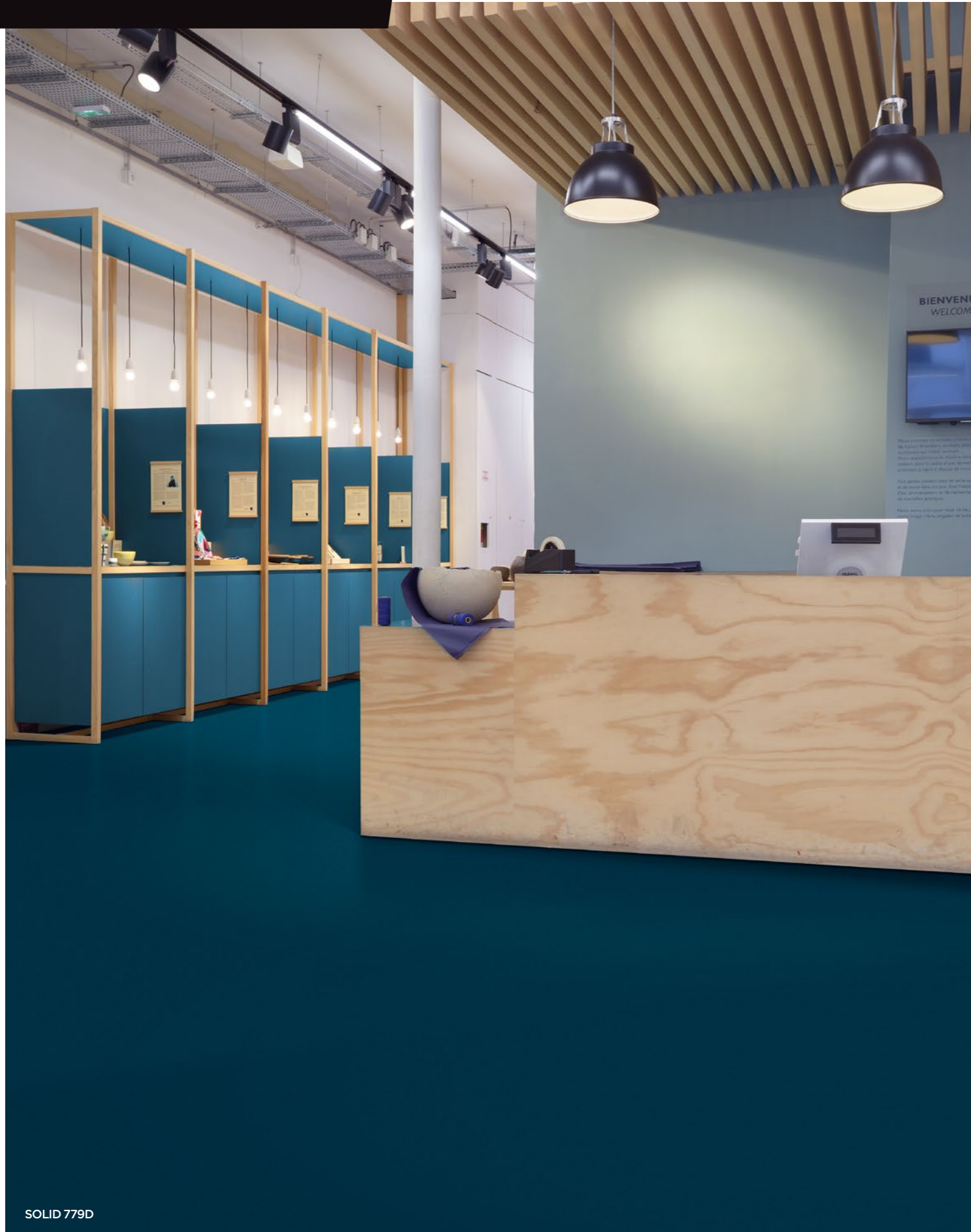
**SAND BEIGE**  
Finish: Sand + Matt  
Size: Allover  
Repeat: 100 x 150 cm  
2m: 50047058 4m: 50047050



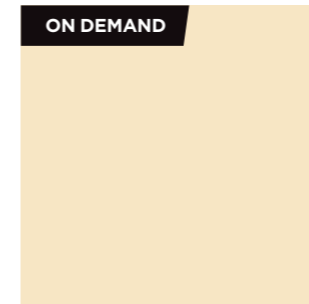
**ROUTE 66**  
Finish: Sand + Matt  
Size: Allover  
Repeat: 400 x 500 cm  
2m: 50047061 4m: 50047053



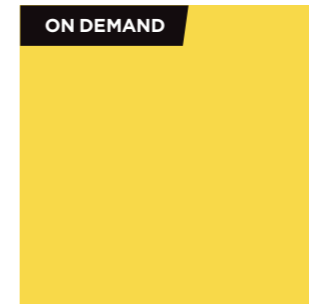
DAISIES



SOLID 779D



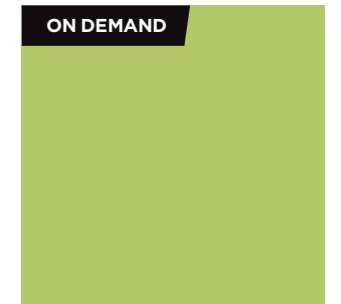
**ON DEMAND**  
**SOLID 111L**  
 Finish: Sand + Matt  
 Size: Allover  
 Repeat: 100 x 100 cm  
 2m: 50046484 4m: 50046479



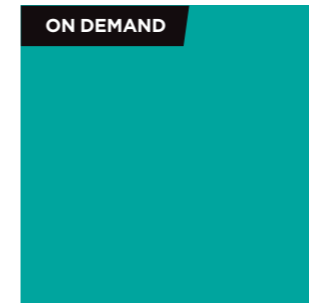
**ON DEMAND**  
**SOLID 222M**  
 Finish: Sand + Matt  
 Size: Allover  
 Repeat: 100 x 100 cm  
 2m: 50046483 4m: 50046478



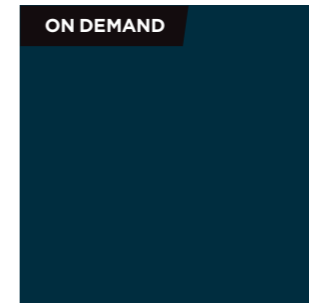
**ON DEMAND**  
**SOLID 343M**  
 Finish: Sand + Matt  
 Size: Allover  
 Repeat: 100 x 100 cm  
 2m: 50046482 4m: 50046477



**ON DEMAND**  
**SOLID 555M**  
 Finish: Sand + Matt  
 Size: Allover  
 Repeat: 100 x 100 cm  
 2m: 50046481 4m: 50046476



**ON DEMAND**  
**SOLID 757D**  
 Finish: Sand + Matt  
 Size: Allover  
 Repeat: 100 x 100 cm  
 2m: 50046480 4m: 50046475



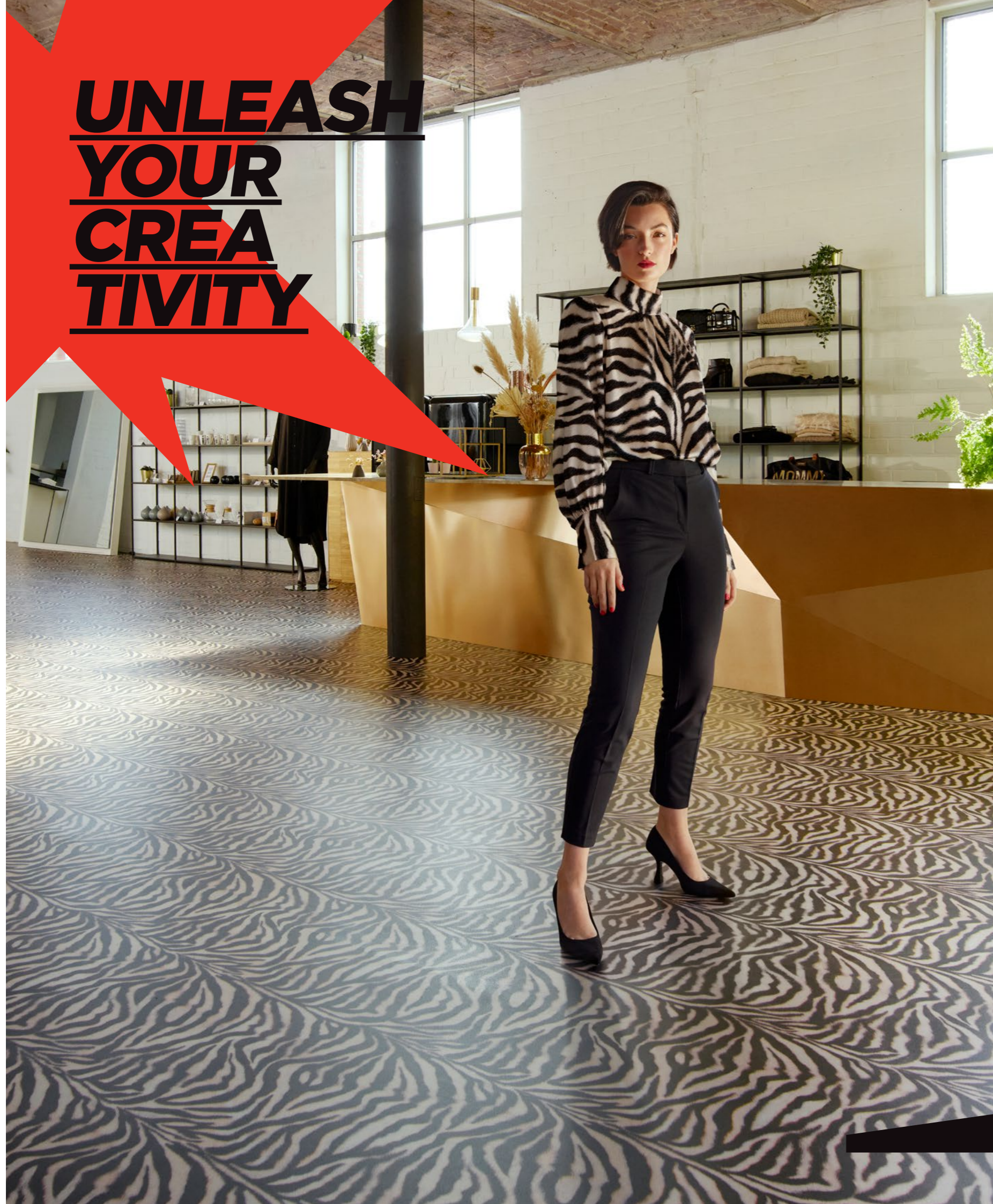
**ON DEMAND**  
**SOLID 779D**  
 Finish: Sand + Matt  
 Size: Allover  
 Repeat: 100 x 100 cm  
 2m: 50046485 4m: 50046474

FOR THESE SPECIAL COLOURS,  
 THERE IS A MINIMUM ORDER  
 QUANTITY OF 3000 M<sup>2</sup>.



SOLID 555M

**UNLEASH  
YOUR  
CREA  
TIVITY**



**At Beauflor Create nothing is impossible.**

Thanks to our high definition digital printing technology, we can offer you the possibility to (co)create whichever design you have in mind.

**You dream it, we make it.**

We not only push our creative limits in the design process, we also help you with the layout of the floor by translating your bespoke design in a clear installation plan. From the first step to the last, we are there for you.

Are you ready to unleash your creativity?

**Dare to  
go wild**



# HELLO CREATIVITY STUDIO/CREA

## FROM CHANGING THE COLOR TO CREATING A TRULY BESPOKE FLOOR!

### STUDIO

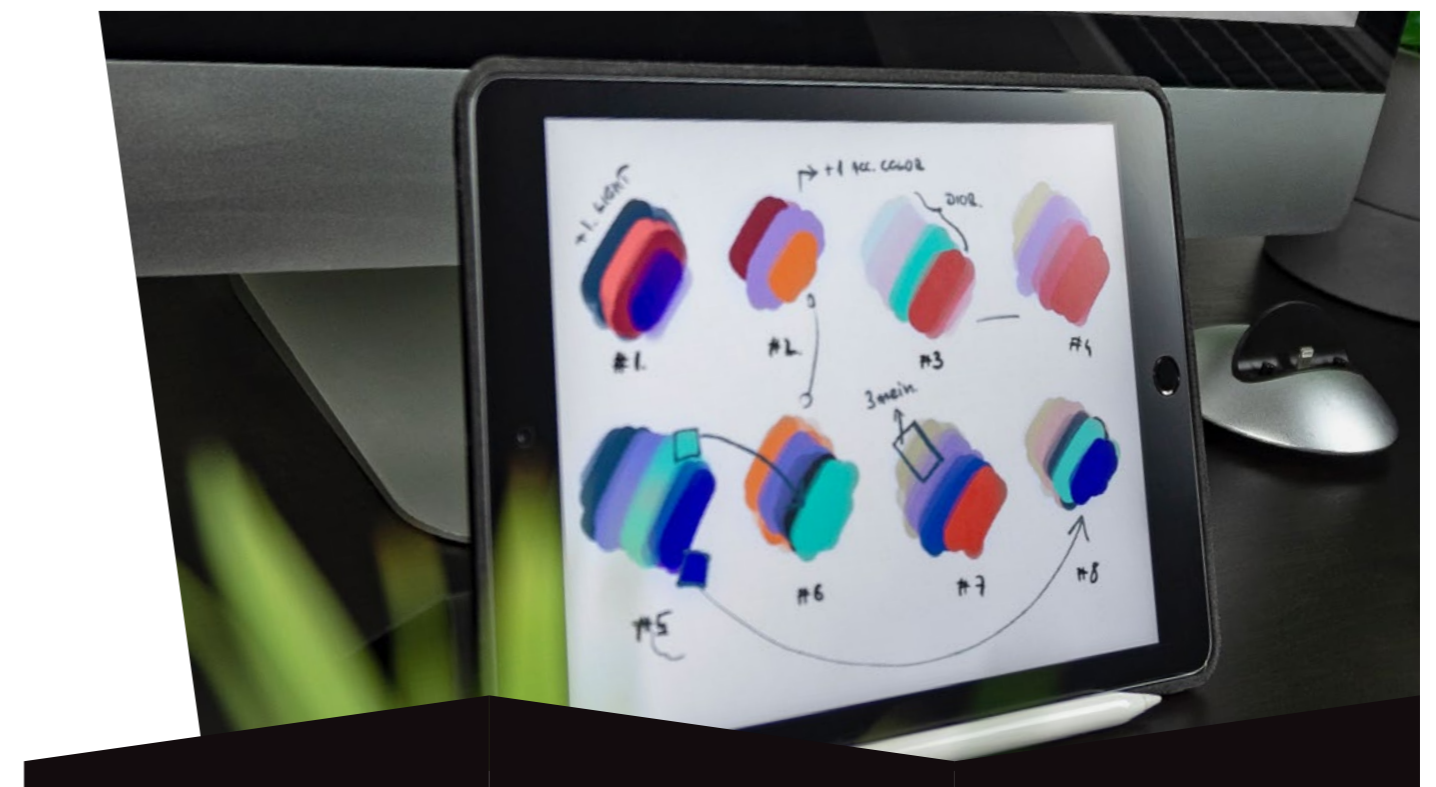
- Select an existing design from any of our standard collections and we can also adapt the color.
- Select an image from our digital image bank and we can also adapt the color.

For both options you can additionally add texts and/or logos

### CREA

- Deliver us your image or design and we'll convert it to an image that is printable on our vinyl rolls.
- Send us your creative brief (moodboards, materials, or any other source of inspiration) and we'll come up with some great proposals to meet your needs. We co-create and translate your ideas into a stunning design that is printable on our vinyl rolls.

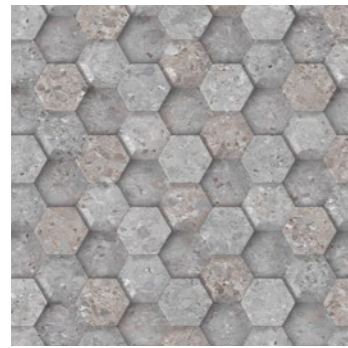
**We can produce your designs as from 88 m<sup>2</sup> onwards  
(= one roll of 4m width)**



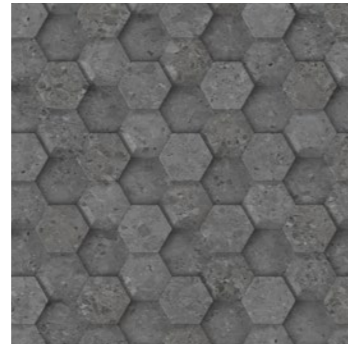
# STUDIO USE AN EXISTING DESIGN

We have a huge selection of designs which can be adapted to suit your requirements so that you achieve the perfect look for your project - be it residential or commercial.  
For example: by changing the colours, adding your company logo, etc.

Choose one of our designs



Adapt to your own theme



Add your company logo



Vinyl  
flooring at  
its finest

# CREA CO-CREATE WITH OUR DESIGN TEAM

Work directly with our design team and create a concept from scratch based on your briefing in which you specify the target audience, the room size, style, etc. and we will come up with creative concepts for you to consider.



# CREA IT'S UP TO YOU! DELIVER US YOUR IMAGE

Great if you already have a very specific image or design in mind! We can convert it easily into an image that is printable on our vinyl rolls.

# TRUST THE DESIGN PROCESS

## PROCESS OVERVIEW 4 SIMPLE STEPS

### STEP ONE



#### Design brief (studio or crea)

Choose a design or image from our large image bank, deliver us your image or send us your creative brief and we'll create the perfect design for you.

### STEP TWO



#### On screen proposals

After approval of the design (on screen) you will receive reference samples.

### STEP THREE



#### Sample for approval

After approval of the reference sample, you can place your order.

### STEP FOUR



#### Production & delivery

Receive and install your personalized floor after production and delivery.

Lead times: standard ranges 4-6 weeks, non-standard ranges depending on the quality 6 to 8 weeks, 8 to 12 weeks



As part of the CREA design process, we will translate your floorplan in a roll distribution plan. The installation of your personalized floor has never been more easy!

## GET YOUR SAMPLES

### Studio print

standard size: 1 x 1 m

The fastest way to see your design in full scale. A professional print without a wear layer.

Important: this sample cannot be used as a 100% color reference (no top coat).

### Lab sample

standard size: 50 x 70 cm

This is a studio print with a top coat for color approval.

### Finished product sample

standard size: 1 x 1 m

For specific projects, a finished product sample may be needed. For this, we can do a short test production of sections up to 100 x 400cm, depending on the design.

Check lead times with your sales representative depending on the design.

If you would like to receive more information regarding this Beauflor create concept, ask your sales representative or have a look at our digital print brochure.

## REFERENCE PROJECTS

Whether you need a floor for an office, school, kindergarten, exhibition, healthcare or the hospitality sector - we have it covered! - If you cannot find what you are looking for, you can always design your own floor, together with our design team!

See how our products are used in real life...



E Leclerc commercial centre - France



High school sports centre - The Netherlands



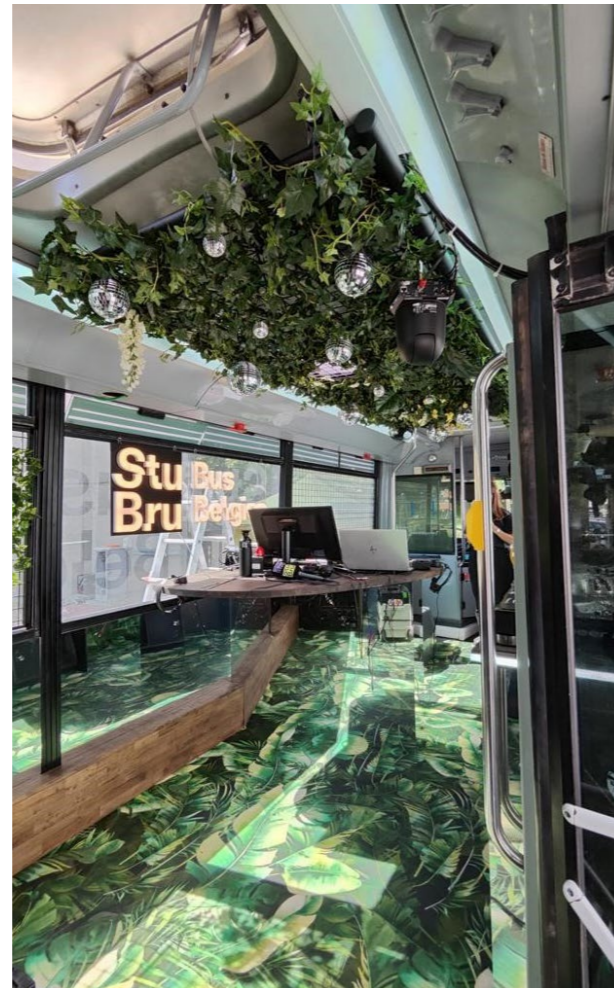
School RSG Ter Apel - The Netherlands



Ibis Mogilska Hotel - Poland



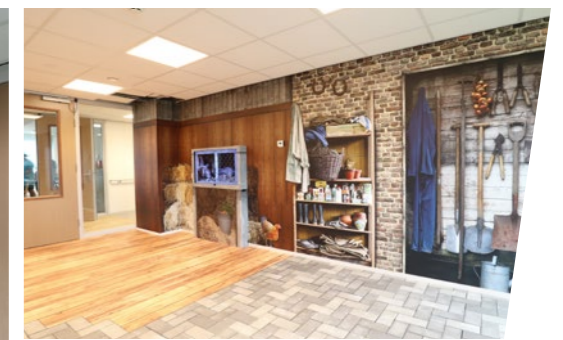
Sunside café Toulouse - France



Festival bus Studio Brussel (radio station) - Belgium



Care facility Cedrah - The Netherlands



Da Shan Kindergarten - China



Football club FC Zuidlaren - The Netherlands





## Technical information

### Technical data sheets

XTREME LUX	114
XTREME	115
PHONI-XTREME	116
AMBIENT	117
TITAN	118
TECHNO-TEX	119
EXPOLINE	120
PHONITEC	121
SONIPRO	122
RESITEX	123
FAIRPLAY	124

<b>Sustainability</b>	<b>126</b>
-----------------------	------------

<b>Classification of use</b>	<b>134</b>
------------------------------	------------

<b>Installation instructions</b>	<b>136</b>
----------------------------------	------------

PRODUCT INFORMATION

Norm	EN ISO 10582			
Intensity of use	ISO 10874 (EN 685)		23 domestic heavy 34 commercial very heavy 43 industrial heavy	class
Total thickness	EN ISO 24346 (EN 428)		2,00	mm
Wear layer	EN ISO 24340 (EN 429)		0,70	mm
Abrasion group	EN 660-2		T	class
Total weight	EN ISO 23997 (EN 430)		2800	g/m <sup>2</sup>
Standard width	EN ISO 24341 (EN 426)		2 - 4	m
Standard length	EN ISO 24341 (EN 426)		+/- 22	m

TECHNICAL INFORMATION

Dimensional stability	EN ISO 23999 (EN 434)		≤ 0,40	%
Curling	EN ISO 23999		≤ 8	mm
Light stability	EN ISO 105 B02		≥ 6	degree
Residual indentation	EN ISO 24343-1 (EN 433)		≤ 0,10	mm
Impact sound improvement	EN ISO 717/2		Δ Lw 6	dB
Dynamic coefficient of friction	EN 13893		> 0,6	
Slip resistance (ramp test with oil)	DIN 51130		R10	scale
Reaction to fire Report number ---- VNL F 031380.4	EN 13501-1		Bfl-s1	class
Underfloor heating	EN 12667		suitable	
Thermal resistance	ISO 8302		0,014	m <sup>2</sup> .K/W
Thermal conductivity	EN 12524		0,14	W/(m.K)
Chemical resistance	ISO 26987 (EN 423)		resistant	
Static electrical propensity	EN 1815		< 2kV	on concrete
Delamination test (peel resistance)	EN ISO 24345		≥ 50N/50mm	
Furniture leg resistance	ISO 16581 (EN 424)		no damage	
Castor chair resistance	EN ISO 4918		suitable (type wheel H)	
Pendulum test	CENTS 15676:2007		43 wet 63 dry	
Antibacterial treatment	EN ISO 846		yes	

SUSTAINABILITY

We feel that it's our moral duty to contribute to a more sustainable world. This is illustrative by the choice of raw materials, of partners, of transport and of fabrication processes. Our selection of core materials is based on a combination of our clients' requirements for a quality product as well as requirements for a minimal impact on the environment.

**Ortho-phthalates free**

**100% RECYCLABLE**

- No heavy metals
- No solvents
- No formaldehyde
- No harmful plasticizers

**E1** Level of formaldehyde is inferior to 0,1ppm (= 0.12 mg/m<sup>3</sup> of air)

**A+** Our products are classified as A+ for the emission of volatile substances in inside air (compulsive sanitary labelling in France since January 2012)

**floor score**

**BB** Auszeichnung für gesundheitliche Bewertung von Bauprodukten

FEATURES

EN 14941  
**CE**  
**05**  
DOP: 450-0C0913-1

**PROTECH COATING**

**R10** (GARANTÉ)

**BACTERIA SHIELD+**  
KILLS 99.9% IN SECONDS  
ISO 22396

**20 YEAR** RESIDENTIAL WARRANTY

**10 YEAR** COMMERCIAL WARRANTY

**FLOOR HEATING**

**NO SOLVENTS**

**NO FORMALDEHYDE**

**NO HARMFUL PLASTICIZERS**

PRODUCT INFORMATION

Norm	EN ISO 10582			
Intensity of use	ISO 10874 (EN 685)		23 domestic heavy 34 commercial very heavy 43 industrial heavy	class
Total thickness	EN ISO 24346 (EN 428)		2,00	mm
Wear layer	EN ISO 24340 (EN 429)		0,70	mm
Abrasion group	EN 660-2		T	class
Total weight	EN ISO 23997 (EN 430)		2800	g/m <sup>2</sup>
Standard width	EN ISO 24341 (EN 426)		2 - 3 - 4*	m
Standard length	EN ISO 24341 (EN 426)		+/- 22	m

TECHNICAL INFORMATION

Dimensional stability	EN ISO 23999 (EN 434)		≤ 0,40	%
Curling	EN ISO 23999		≤ 8	mm
Light stability	EN ISO 105 B02		≥ 6	degree
Residual indentation	EN ISO 24343-1 (EN 433)		≤ 0,10	mm
Impact sound improvement	EN ISO 717/2		Δ Lw 6	dB
Dynamic coefficient of friction	EN 13893		> 0,6	
Slip resistance (ramp test with oil)	DIN 51130		R10	scale
Reaction to fire Report number ---- VNL F 031380.4	EN 13501-1		Bfl-s1	class
Underfloor heating	EN 12667		suitable	
Thermal resistance	ISO 8302		0,014	m <sup>2</sup> .K/W
Thermal conductivity	EN 12524		0,14	W/(m.K)
Chemical resistance	ISO 26987 (EN 423)		resistant	
Static electrical propensity	EN 1815		< 2kV	on concrete
Delamination test (peel resistance)	EN ISO 24345		≥ 50N/50mm	
Furniture leg resistance	ISO 16581 (EN 424)		no damage	
Castor chair resistance	EN ISO 4918		suitable (type wheel H)	
Pendulum test	CENTS 15676:2007		43 wet 63 dry	
Antibacterial treatment	EN ISO 846		yes	

\* check individual ref. for available widths

SUSTAINABILITY

We feel that it's our moral duty to contribute to a more sustainable world. This is illustrative by the choice of raw materials, of partners, of transport and of fabrication processes. Our selection of core materials is based on a combination of our clients' requirements for a quality product as well as requirements for a minimal impact on the environment.

**Ortho-phthalates free**

**100% RECYCLABLE**

- No heavy metals
- No solvents
- No formaldehyde
- No harmful plasticizers

**E1** Level of formaldehyde is inferior to 0,1ppm (= 0.12 mg/m<sup>3</sup> of air)

**A+** Our products are classified as A+ for the emission of volatile substances in inside air (compulsive sanitary labelling in France since January 2012)

**floor score**

**BB** Auszeichnung für gesundheitliche Bewertung von Bauprodukten

FEATURES

EN 14941  
**CE**  
**05**  
DOP: 450-0C0913-1

**PROTECH COATING**

**R10** (GARANTÉ)

**BACTERIA SHIELD+**  
KILLS 99.9% IN SECONDS  
ISO 22396

**20 YEAR** RESIDENTIAL WARRANTY

**10 YEAR** COMMERCIAL WARRANTY

**FLOOR HEATING**

**NO SOLVENTS**

**NO FORMALDEHYDE**

**NO HARMFUL PLASTICIZERS**

PRODUCT INFORMATION

Norm	EN ISO 11638			
Intensity of use	ISO 10874 (EN 685)		23 domestic heavy 34 commercial very heavy 42 industrial general	class
Total thickness	EN ISO 24346 (EN 428)		3,35	mm
Wear layer	EN ISO 24340 (EN 429)		0,70	mm
Abrasion group	EN 660-2		T	class
Total weight	EN ISO 23997 (EN 430)		2400	g/m <sup>2</sup>
Standard width	EN ISO 24341 (EN 426)		2 - 4	m
Standard length	EN ISO 24341 (EN 426)		+/- 25	m

TECHNICAL INFORMATION

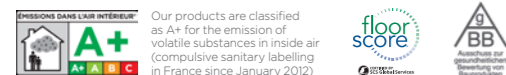
Dimensional stability	EN ISO 23999 (EN 434)		≤ 0,40	%
Curling	EN ISO 23999		≤ 8	mm
Light stability	EN ISO 105 B02		≥ 6	degree
Residual indentation	EN ISO 24343-1 (EN 433)		≤ 0,20	mm
Impact sound improvement	EN ISO 717/2		Δ Lw 19	dB
Dynamic coefficient of friction	EN 13893		> 0,6	
Slip resistance (ramp test with oil)	DIN 51130		R10	scale
Reaction to fire Report number ---- VNL F 031380.4	EN 13501-1		Bfl-s1	class
Underfloor heating	EN 12667		suitable	
Thermal resistance	ISO 8302		0,030	m <sup>2</sup> .K/W
Thermal conductivity	EN 12524		0,11	W/(m.K)
Chemical resistance	ISO 26987 (EN 423)		resistant	
Static electrical propensity	EN 1815		< 2kV	on concrete
Delamination test (peel resistance)	EN ISO 24345		≥ 50N/50mm	
Furniture leg resistance	ISO 16581 (EN 424)		no damage	
Castor chair resistance	EN ISO 4918		suitable (type wheel H)	
Antibacterial treatment	EN ISO 846		yes	

SUSTAINABILITY

We feel that it's our moral duty to contribute to a more sustainable world. This is illustrative by the choice of raw materials, of partners, of transport and of fabrication processes. Our selection of core materials is based on a combination of our clients' requirements for a quality product as well as requirements for a minimal impact on the environment.

- Ortho-phthalates free
- 100% RECYCLABLE
- No heavy metals
- No solvents
- No formaldehyde
- No harmful plasticizers

**E1**  
 HARMFUL FOR INTERIORS  
 Level of formaldehyde is inferior to 0,1ppm (= 0,12 mg/m<sup>3</sup> of air)



FEATURES



PRODUCT INFORMATION

Norm	EN ISO 26986			
Intensity of use	ISO 10874 (EN 685)		23 domestic heavy 33 commercial heavy 42 industrial general	class
Total thickness	EN ISO 24346 (EN 428)		2,50	mm
Wear layer	EN ISO 24340 (EN 429)		0,70	mm
Abrasion group	EN 660-2		T	class
Total weight	EN ISO 23997 (EN 430)		2600	g/m <sup>2</sup>
Standard width	EN ISO 24341 (EN 426)		2 -3 - 4	m
Standard length	EN ISO 24341 (EN 426)		+/- 25	m

TECHNICAL INFORMATION

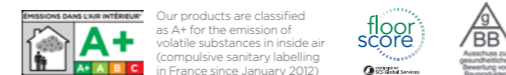
Dimensional stability	EN ISO 23999 (EN 434)		≤ 0,40	%
Curling	EN ISO 23999		≤ 8	mm
Light stability	EN ISO 105 B02		≥ 6	degree
Residual indentation	EN ISO 24343-1 (EN 433)		≤ 0,10	mm
Impact sound improvement	EN ISO 717/2		Δ Lw 13	dB
Dynamic coefficient of friction	EN 13893		> 0,6	
Slip resistance (ramp test with oil)	DIN 51130		DS	scale
Reaction to fire Report number ---- VNL F 031380.4	EN 13501-1		Bfl-s1	class
Underfloor heating	EN 12667		suitable	
Thermal resistance	ISO 8302		0,025	m <sup>2</sup> .K/W
Thermal conductivity	EN 12524		0,10	W/(m.K)
Chemical resistance	ISO 26987 (EN 423)		resistant	
Static electrical propensity	EN 1815		< 2kV	on concrete
Delamination test (peel resistance)	EN ISO 24345		≥ 50N/50mm	
Furniture leg resistance	ISO 16581 (EN 424)		no damage	
Castor chair resistance	EN ISO 4918		suitable (type wheel H)	

SUSTAINABILITY

We feel that it's our moral duty to contribute to a more sustainable world. This is illustrative by the choice of raw materials, of partners, of transport and of fabrication processes. Our selection of core materials is based on a combination of our clients' requirements for a quality product as well as requirements for a minimal impact on the environment.

- Ortho-phthalates free
- 100% RECYCLABLE
- No heavy metals
- No solvents
- No formaldehyde
- No harmful plasticizers

**E1**  
 HARMFUL FOR INTERIORS  
 Level of formaldehyde is inferior to 0,1ppm (= 0,12 mg/m<sup>3</sup> of air)



FEATURES



PRODUCT INFORMATION

Norm	EN ISO 26986			
Intensity of use	ISO 10874 (EN 685)		23 domestic heavy 33 commercial heavy 42 industrial general	class
Total thickness	EN ISO 24346 (EN 428)		2,50	mm
Wear layer	EN ISO 24340 (EN 429)		0,60	mm
Abrasion group	EN 660-2		T	class
Total weight	EN ISO 23997 (EN 430)		2200	g/m <sup>2</sup>
Standard width	EN ISO 24341 (EN 426)		2 - 3 - 4	m
Standard length	EN ISO 24341 (EN 426)		+/- 27	m

TECHNICAL INFORMATION

Dimensional stability	EN ISO 23999 (EN 434)		≤ 0,40	%
Curling	EN ISO 23999		≤ 8	mm
Light stability	EN ISO 105 B02		≥ 6 - 7	degree
Residual indentation	EN ISO 24343-1 (EN 433)		≤ 0,15	mm
Impact sound improvement	EN ISO 717/2		Δ Lw 16	dB
Dynamic coefficient of friction	EN 13893		> 0,6	
Slip resistance (ramp test with oil)	DIN 51130		R10	scale
Reaction to fire Report number ---- VNLf 031380.4	EN 13501-1		Bfl-s1	class
Underfloor heating	EN 12667		suitable	
Thermal resistance	ISO 8302		0,016	m <sup>2</sup> .K/W
Thermal conductivity	EN 12524		0,15	W/(m.K)
Chemical resistance	ISO 26987 (EN 423)		resistant	
Static electrical propensity	EN 1815		< 2kV	on concrete
Delamination test (peel resistance)	EN ISO 24345		≥ 50N/50mm	
Furniture leg resistance	ISO 16581 (EN 424)		no damage	
Castor chair resistance	EN ISO 4918		suitable (type wheel H)	

SUSTAINABILITY

We feel that it's our moral duty to contribute to a more sustainable world. This is illustrative by the choice of raw materials, of partners, of transport and of fabrication processes. Our selection of core materials is based on a combination of our clients' requirements for a quality product as well as requirements for a minimal impact on the environment.

- Ortho-phthalates free
- 100% RECYCLABLE
- No heavy metals
- No solvents
- No formaldehyde
- No harmful plasticizers

**E1**  
Limitation for formaldehyde  
Level of formaldehyde is inferior to 0,1ppm (= 0.12 mg/m<sup>3</sup> of air)

**A+**  
Our products are classified as A+ for the emission of volatile substances in inside air (compulsive sanitary labelling in France since January 2012)

**floor score**  
A+  
A+ A B C

**BB**  
Ausschüsse zur gesundheitlichen Bewertung von Bauprodukten

FEATURES



PRODUCT INFORMATION

Norm	EN ISO 26986			
Intensity of use	ISO 10874 (EN 685)		23 domestic heavy 33 commercial heavy 42 industrial general	class
Total thickness	EN ISO 24346 (EN 428)		2,60	mm
Wear layer	EN ISO 24340 (EN 429)		0,55	mm
Abrasion group	EN 660-2		T	class
Total weight	EN ISO 23997 (EN 430)		2370	g/m <sup>2</sup>
Standard width	EN ISO 24341 (EN 426)		2 - 3 - 4	m
Standard length	EN ISO 24341 (EN 426)		+/- 30	m

TECHNICAL INFORMATION

Dimensional stability	EN ISO 23999 (EN 434)		≤ 0,40	%
Curling	EN ISO 23999		≤ 8	mm
Light stability	EN ISO 105 B02		≥ 6	degree
Residual indentation	EN ISO 24343-1 (EN 433)		≤ 0,20	mm
Impact sound improvement	EN ISO 717/2		Δ Lw 14	dB
Dynamic coefficient of friction	EN 13893		> 0,6	
Slip resistance (ramp test with oil)	DIN 51130		R11 PU lacquered R10 Sustainable	scale
Reaction to fire Report number ---- VNLf 031380.4	EN 13501-1		Cfl-s1	class
Underfloor heating	EN 12667		suitable	
Thermal resistance	ISO 8302		0,025	m <sup>2</sup> .K/W
Thermal conductivity	EN 12524		0,12	W/(m.K)
Chemical resistance	ISO 26987 (EN 423)		resistant	
Static electrical propensity	EN 1815		< 2kV	on concrete
Delamination test (peel resistance)	EN ISO 24345		≥ 50N/50mm	
Furniture leg resistance	ISO 16581 (EN 424)		no damage	
Castor chair resistance	EN ISO 4918		suitable (type wheel H)	
Pendulum test	CENTS 15676:2007		71 wet 77 dry	

SUSTAINABILITY

We feel that it's our moral duty to contribute to a more sustainable world. This is illustrative by the choice of raw materials, of partners, of transport and of fabrication processes. Our selection of core materials is based on a combination of our clients' requirements for a quality product as well as requirements for a minimal impact on the environment.

- Ortho-phthalates free
- No heavy metals
- No solvents
- No formaldehyde
- No harmful plasticizers

**E1**  
Limitation for formaldehyde  
Level of formaldehyde is inferior to 0,1ppm (= 0.12 mg/m<sup>3</sup> of air)

**A+**  
Our products are classified as A+ for the emission of volatile substances in inside air (compulsive sanitary labelling in France since January 2012)

**floor score**  
A+  
A+ A B C

**BB**  
Ausschüsse zur gesundheitlichen Bewertung von Bauprodukten

FEATURES



PRODUCT INFORMATION

Norm	EN ISO 26986				
Intensity of use	ISO 10874 (EN 685)		23 domestic heavy 32 commercial general 41 industrial moderate	class	
Total thickness	EN ISO 24346 (EN 428)		2,00	mm	
Wear layer	EN ISO 24340 (EN 429)		0,40	mm	
Abrasion group	EN 660-2		T	class	
Total weight	EN ISO 23997 (EN 430)		1600	g/m <sup>2</sup>	
Standard width	EN ISO 24341 (EN 426)		2 - 3 - 4	m	
Standard length	EN ISO 24341 (EN 426)		+/- 30	m	

TECHNICAL INFORMATION

Dimensional stability	EN ISO 23999 (EN 434)		≤ 0,40	%	
Curling	EN ISO 23999		≤ 8	mm	
Light stability	EN ISO 105 B02		≥ 6	degree	
Residual indentation	EN ISO 24343-1 (EN 433)		≤ 0,20	mm	
Impact sound improvement	EN ISO 717/2		Δ Lw 10	dB	
Dynamic coefficient of friction	EN 13893		> 0,6		
Slip resistance (ramp test with oil)	DIN 51130		R10	scale	
Reaction to fire Report number ---- VNLF 031380.4	EN 13501-1		Bfl-s1	class	
Underfloor heating	EN 12667		suitable		
Thermal resistance	ISO 8302		0,015	m <sup>2</sup> .K/W	
Thermal conductivity	EN 12524		0,13	W/(m.K)	
Chemical resistance	ISO 26987 (EN 423)		resistant		
Static electrical propensity	EN 1815		< 2kV	on concrete	
Delamination test (peel resistance)	EN ISO 24345		≥ 50N/50mm		
Furniture leg resistance	ISO 16581 (EN 424)		no damage		
Castor chair resistance	EN ISO 4918		suitable (type wheel W)		
Pendulum test	CENTS 15676:2007		41 wet 76 dry		

PRODUCT INFORMATION

Norm	EN ISO 11638				
Intensity of use	ISO 10874 (EN 685)		23 domestic heavy 32 commercial general 41 industrial moderate	class	
Total thickness	EN ISO 24346 (EN 428)		3,30	mm	
Wear layer	EN ISO 24340 (EN 429)		0,37	mm	
Abrasion group	EN 660-2		T	class	
Total weight	EN ISO 23997 (EN 430)		2270	g/m <sup>2</sup>	
Standard width	EN ISO 24341 (EN 426)		2 - 3 - 4	m	
Standard length	EN ISO 24341 (EN 426)		+/- 30	m	

TECHNICAL INFORMATION

Dimensional stability	EN ISO 23999 (EN 434)		≤ 0,40	%	
Curling	EN ISO 23999		≤ 8	mm	
Light stability	EN ISO 105 B02		≥ 6	degree	
Residual indentation	EN ISO 24343-1 (EN 433)		≤ 0,20	mm	
Impact sound improvement	EN ISO 717/2		Δ Lw 20	dB	
Dynamic coefficient of friction	EN 13893		> 0,6		
Slip resistance (ramp test with oil)	DIN 51130		R10	scale	
Reaction to fire Report number ---- VNLF 031380.4	EN 13501-1		Bfl-s1	class	
Underfloor heating	EN 12667		suitable		
Thermal resistance	ISO 8302		0,032	m <sup>2</sup> .K/W	
Thermal conductivity	EN 12524		0,10	W/(m.K)	
Chemical resistance	ISO 26987 (EN 423)		resistant		
Static electrical propensity	EN 1815		< 2kV	on concrete	
Delamination test (peel resistance)	EN ISO 24345		≥ 50N/50mm		
Furniture leg resistance	ISO 16581 (EN 424)		no damage		
Castor chair resistance	EN ISO 4918		suitable (type wheel H)		
Antibacterial treatment	EN ISO 846		yes		

SUSTAINABILITY

We feel that it's our moral duty to contribute to a more sustainable world. This is illustrative by the choice of raw materials, of partners, of transport and of fabrication processes. Our selection of core materials is based on a combination of our clients' requirements for a quality product as well as requirements for a minimal impact on the environment.



**E1** Level of formaldehyde is inferior to 0.1ppm (= 0.12 mg/m<sup>3</sup> of air)



FEATURES



SUSTAINABILITY

We feel that it's our moral duty to contribute to a more sustainable world. This is illustrative by the choice of raw materials, of partners, of transport and of fabrication processes. Our selection of core materials is based on a combination of our clients' requirements for a quality product as well as requirements for a minimal impact on the environment.



**E1** Level of formaldehyde is inferior to 0.1ppm (= 0.12 mg/m<sup>3</sup> of air)



FEATURES



PRODUCT INFORMATION

Norm	EN ISO 26986				
Intensity of use	ISO 10874 (EN 685)		23 domestic heavy 32 commercial general 41 industrial moderate	class	
Total thickness	EN ISO 24346 (EN 428)		3,00	mm	
Wear layer	EN ISO 24340 (EN 429)		0,35	mm	
Abrasion group	EN 660-2		T	class	
Total weight	EN ISO 23997 (EN 430)		1850	g/m <sup>2</sup>	
Standard width	EN ISO 24341 (EN 426)		2 - 3 - 4	m	
Standard length	EN ISO 24341 (EN 426)		+/- 30	m	

TECHNICAL INFORMATION

Dimensional stability	EN ISO 23999 (EN 434)		≤ 0,40	%	
Curling	EN ISO 23999		≤ 8	mm	
Light stability	EN ISO 105 B02		≥ 6	degree	
Residual indentation	EN ISO 24343-1 (EN 433)		≤ 0,35	mm	
Impact sound improvement	EN ISO 717/2		Δ Lw 19	dB	
Dynamic coefficient of friction	EN 13893		> 0,6		
Slip resistance (ramp test with oil)	DIN 51130		R10	scale	
Reaction to fire Report number ---- VNL F 031380.4	EN 13501-1		Bfl-s1	class	
Underfloor heating	EN 12667		suitable		
Thermal resistance	ISO 8302		0,028	m <sup>2</sup> .K/W	
Thermal conductivity	EN 12524		0,11	W/(m.K)	
Chemical resistance	ISO 26987 (EN 423)		resistant		
Static electrical propensity	EN 1815		< 2kV	on concrete	
Delamination test (peel resistance)	EN ISO 24345		≥ 50N/50mm		
Furniture leg resistance	ISO 16581 (EN 424)		no damage		
Castor chair resistance	EN ISO 4918		suitable (type wheel H)		
Antibacterial treatment	EN ISO 846		yes		
Pendulum test	CENTS 15676:2007		42 wet 74 dry		

SUSTAINABILITY

We feel that it's our moral duty to contribute to a more sustainable world. This is illustrative by the choice of raw materials, of partners, of transport and of fabrication processes. Our selection of core materials is based on a combination of our clients' requirements for a quality product as well as requirements for a minimal impact on the environment.



**E1** Level of formaldehyde is inferior to 0.1ppm (= 0.12 mg/m<sup>3</sup> of air)



Our products are classified as A+ for the emission of volatile substances in inside air (compulsive sanitary labelling in France since January 2012)



FEATURES



PRODUCT INFORMATION

Norm	EN ISO 26986				
Intensity of use	ISO 10874 (EN 685)		23 domestic heavy 32 commercial general 41 industrial moderate	class	
Total thickness	EN ISO 24346 (EN 428)		2,70	mm	
Wear layer	EN ISO 24340 (EN 429)		0,35	mm	
Abrasion group	EN 660-2		T	class	
Total weight	EN ISO 23997 (EN 430)		2000	g/m <sup>2</sup>	
Standard width	EN ISO 24341 (EN 426)		2 - 4	m	
Standard length	EN ISO 24341 (EN 426)		+/- 30	m	

TECHNICAL INFORMATION

Dimensional stability	EN ISO 23999 (EN 434)		≤ 0,40	%	
Curling	EN ISO 23999		≤ 8	mm	
Light stability	EN ISO 105 B02		≥ 6	degree	
Residual indentation	EN ISO 24343-1 (EN 433)		≤ 0,20	mm	
Impact sound improvement	EN ISO 717/2		Δ Lw 16	dB	
Dynamic coefficient of friction	EN 13893		> 0,6		
Slip resistance (ramp test with oil)	DIN 51130		R10	scale	
Reaction to fire Report number ---- VNL F 031380.4	EN 13501-1		Bfl-s1	class	
Underfloor heating	EN 12667		suitable		
Thermal resistance	ISO 8302		0,018	m <sup>2</sup> .K/W	
Thermal conductivity	EN 12524		0,16	W/(m.K)	
Chemical resistance	ISO 26987 (EN 423)		resistant		
Static electrical propensity	EN 1815		< 2kV	on concrete	
Delamination test (peel resistance)	EN ISO 24345		≥ 50N/50mm		
Furniture leg resistance	ISO 16581 (EN 424)		no damage		
Castor chair resistance	EN ISO 4918		suitable (type wheel W)		
Pendulum test	CENTS 15676:2007		45 wet 78 dry		

SUSTAINABILITY

We feel that it's our moral duty to contribute to a more sustainable world. This is illustrative by the choice of raw materials, of partners, of transport and of fabrication processes. Our selection of core materials is based on a combination of our clients' requirements for a quality product as well as requirements for a minimal impact on the environment.



**E1** Level of formaldehyde is inferior to 0.1ppm (= 0.12 mg/m<sup>3</sup> of air)



Our products are classified as A+ for the emission of volatile substances in inside air (compulsive sanitary labelling in France since January 2012)



FEATURES



PRODUCT INFORMATION

Norm	EN ISO 26986			
Intensity of use	ISO 10874 (EN 685)		22 domestic general	class
Total thickness	EN ISO 24346 (EN 428)		2,00	mm
Wear layer	EN ISO 24340 (EN 429)		0,20	mm
Abrasion group	EN 660-2		T	class
Total weight	EN ISO 23997 (EN 430)		1250	g/m <sup>2</sup>
Standard width	EN ISO 24341 (EN 426)		2 - 3 - 4*	m
Standard length	EN ISO 24341 (EN 426)		+/- 30	m

TECHNICAL INFORMATION

Dimensional stability	EN ISO 23999 (EN 434)		≤ 0,40	%
Curling	EN ISO 23999		≤ 8	mm
Light stability	EN ISO 105 B02		≥ 6	degree
Residual indentation	EN ISO 24343-1 (EN 433)		≤ 0,35	mm
Impact sound improvement	EN ISO 717/2		Δ Lw 10	dB
Dynamic coefficient of friction	EN 13893		> 0,6	
Slip resistance (ramp test with oil)	DIN 51130		R10	scale
Reaction to fire Report number ---- VNL F 031380.4	EN 13501-1		Bfl-s1	class
Underfloor heating	EN 12667		suitable	
Thermal resistance	ISO 8302		0,015	m <sup>2</sup> .K/W
Thermal conductivity	EN 12524		0,13	W/(m.K)
Chemical resistance	ISO 26987 (EN 423)		resistant	
Static electrical propensity	EN 1815		< 2kV	on concrete

\* check individual ref. for available widths



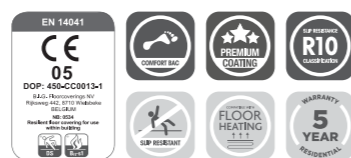
SCALA 239L - TITAN

SUSTAINABILITY

We feel that it's our moral duty to contribute to a more sustainable world. This is illustrative by the choice of raw materials, of partners, of transport and of fabrication processes. Our selection of core materials is based on a combination of our clients' requirements for a quality product as well as requirements for a minimal impact on the environment.



FEATURES



## LET'S GO GREEN!

### BECAUSE WE CAN

We firmly believe that doing business responsibly and innovating with sustainable solutions is a must to stay on top of our field. But as one of the global industry leaders for cushion vinyl flooring, we also feel that it's our moral duty to contribute to a more sustainable world. Especially because we are in the position to make a big difference.

Uncountable square meters of flooring pass under our feet on a weekly basis. Strolling around the house, navigating the office, shopping in town ... we encounter floors everywhere. And Beauflor has a big piece of the pie, designing, producing and distributing large volumes of vinyl flooring to all corners of the world every year.

Well aware of our enormous social and environmental responsibility, we've integrated a sustainable approach into all aspects of our business - from deeply caring for our employees to offering a growing number of eco-friendly flooring solutions.



Be part of the change!



## A TAILORED SUSTAINABILITY MODEL

Sustainability is an integral part of Beauflor and will gain even more importance in the years to come.

To continuously improve our performance when it comes to environmental, social, ethical and economical matters, we created our very own sustainability model. Why? Because we felt that a general framework, such as the UN's 17 Sustainable Development Goals, falls somewhat short of our own unique aspirations.

After carefully capturing the vision of our people, we translated their concerns and ambitions into 5 focus points, which are closely intertwined with our company DNA.

**#1** We take responsibility for the environmental impacts generated in our operations.



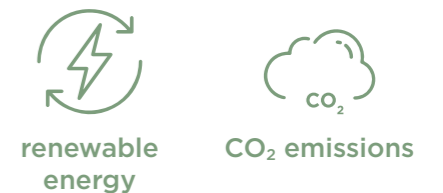
**#2** We value our employees and the people around us.



**#3** We work towards a circular economy with the whole supply chain in mind.



**#4** We take responsibility for our climate impact.



**#5** We act with integrity and value open communication.



## Together for a human, collaborative and sincere future

## ROLLING INTO A LIFECYCLE APPROACH

### TURNING GREENISH INTO BRIGHT GREEN

We want to help consumers to reduce their ecological footprints, whether it's a family wanting to refurbish their home, a businessman planning to build new offices or a retail store looking to find an ideal mix between usability and sustainability. All our products aim to be green. But what exactly makes a product truly 'green'? The answer lies in lifecycle assessment.

Lifecycle assessment implies that everyone in the whole chain of a product's lifecycle, from cradle to grave, has a responsibility and a role to play. From the sourcing of raw materials to end-of-life solutions: every phase of our supply chain offers opportunities to protect the planet. It is our ambition to seize those opportunities to the fullest.

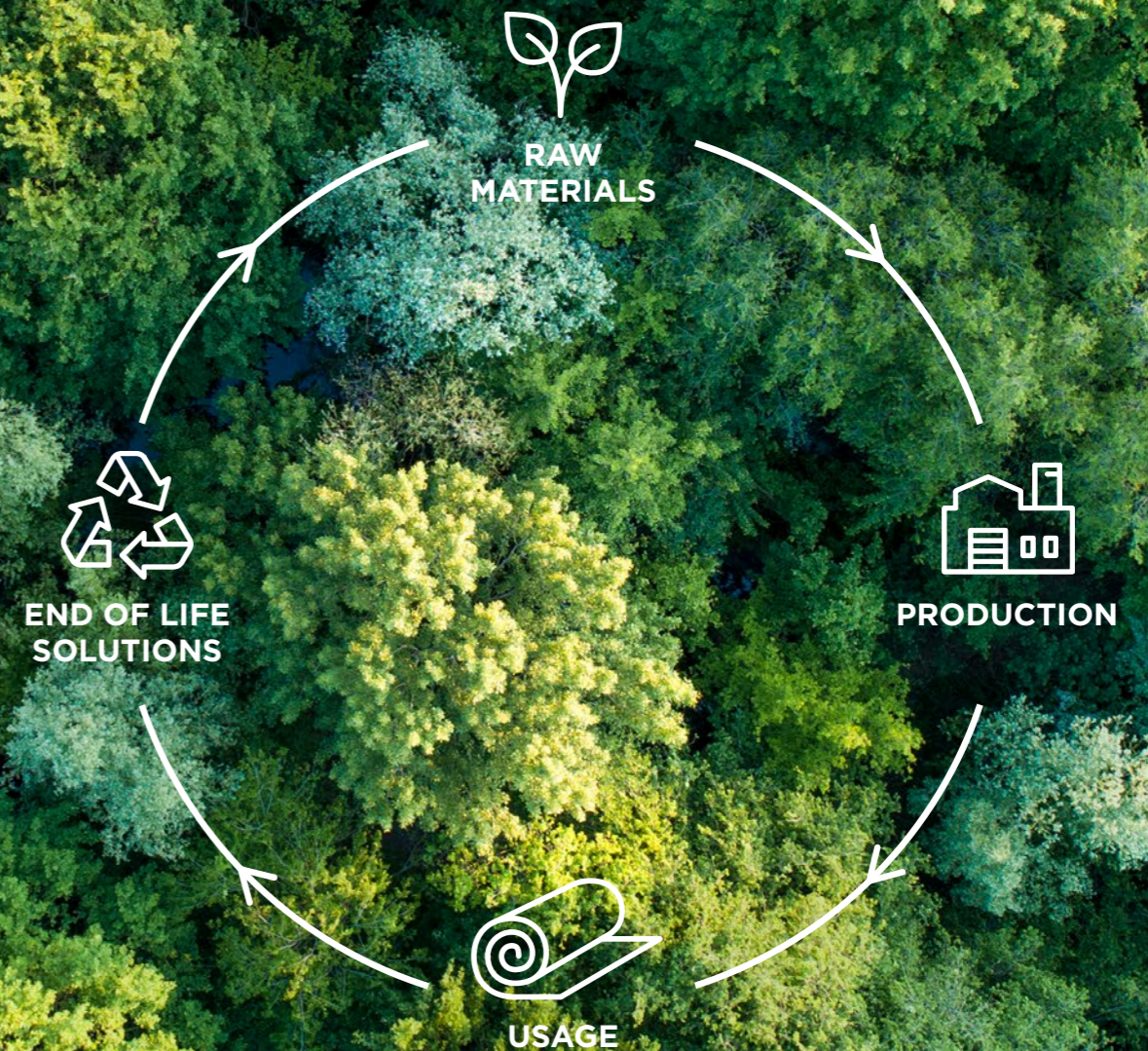
### Full transparency



With EPD and FDES certificates, we provide independently verified and comparable data about the environmental impact of our products. This allows people to objectively evaluate the science-based results of our sustainability efforts. Water consumption, CO<sup>2</sup> emissions, waste management ... numerous key environmental issues are addressed throughout the whole lifecycle.



A new opportunity with every step



# BEAUFLOL IN CERTIFICATES



## REACH

Reach is a European Union regulation concerning the Registration, Evaluation, Authorisation and Restriction of Chemicals. The position of BIG floorcoverings, division cushion vinyl is clear; for all of our European legal entities and divisions, all measures are in place in order to ensure REACH compliancy. No harmful substances added, such as formaldehyde; lead; cadmium; mercury or hexavalent chromium.



## AgBB

AgBB (Ausschuss zur gesundheitlichen Bewertung von Bauprodukten) is a committee for health-related evaluation of building products. Beauflor's vinyl products satisfy the stringent emission criteria as stipulated by the renowned DIBt Institute in Berlin.



## Floorscore®

The most recognized indoor air quality (IAQ) certification standard for hard surface flooring materials, adhesives, and underlayments. Developed by SCS with the Resilient Floor Covering Institute (RFCI), a leading industry trade association of flooring manufacturers and suppliers, it qualifies for many green building schemes including LEED v4, WELL, BREEAM, and CHPS.



## E1

E1 means that the level of formaldehyde is inferior to 0.1ppm (= 0.12 mg/m<sup>3</sup> of air)



## ERFMI

ERFMI (European Resilient Flooring Manufacturer Institute) has prepared EU wide Life Cycle Assessment of a broad range of flooring types and specifications. From this study, a series of Life Cycle Analysis data sheets have been produced, called EPD's (Environment Product Declaration). Beauflor is an active member of ERFMI.



Ortho-phthalates free

## Ortho-phthalates free

All our vinyl sheet products are produced without plasticizers that contain significant impurities. This means that we only use other non-phthalate plasticizers, such as DOTP. We produce with known virgin raw materials from trustworthy vendors throughout the world and therefore we guarantee a 100% ortho-phthalate-free flooring worldwide.



## EcoVadis

The EcoVadis rating covers a wide range of non-financial management systems, including environmental, labor & human rights, ethics and sustainable procurement impacts. EcoVadis, the world's most trusted provider of corporate sustainability ratings, assesses a company's commitments, policies, actions, and results on these 4 topics. Beaulieu International Group, the group to which Beauflor belongs, has achieved a bronze EcoVadis medal for its global operations and 29 factories. This reward underlines our group's valued actions and reliability in the field of sustainable business operations.



## BREEAM

BREEAM is one of the world's leading rating systems to measure sustainability and environmental performance of new and existing buildings. Beauflor products, which hold high ratings, positively contribute to a building's overall score.



## Green A+ label

All our Beauflor products carry the green A+ label, the highest accolade awarded by the French authorities.



## VinylPlus®

VinylPlus® is the voluntary commitment to sustainable development of the European PVC industry, working to improve the sustainability performance of PVC. PVC can be recycled multiple times, and VinylPlus® works to do just this! Beauflor is an active member of Vinylplus®.



## FDES

An FDES (Fiche de Déclaration Environnementale et Sanitaire) is a standardized document that shows the results of a product's life cycle analysis as well as health information, used to calculate the environmental and health performance of an eco-designbuilding. This is also known as an EPD (Environmental Product Declaration). All our ranges are covered by an FDES - or EPD - which enables our customers to assess the environmental impact of our products and to our engineers, to set eco-design targets according to objective criteria.



## ISO 14001

ISO 14001 certification means that the industrial site complies with all the environmental standards, measures all environmental impacts and is committed to continuously improve its environmental performance. Beauflor's Belgian and Slovenian plants are ISO 14001 certified.



## ISO 9001

The most widely used standard for quality control worldwide. The goal of the quality management system is to keep the organization focused on continuous improvement in order to increase customer satisfaction. Beauflor's Belgian and Slovenian plants are ISO 9001 certified.



## ISO 45001

ISO 45001 sets guidelines for establishing and improving a management system for workplace health and safety. The standard focuses on the continuous improvement of safety and health performance, meeting legal and other requirements and achieving safety and health objectives. Beauflor's Belgian plant is ISO 45001 certified.

# CLASSIFICATION OF USE

## EUROPEAN STANDARD : The use category

In Europe, since 1996, the NF EN 685 standard also identifies destination categories of flooring. It defines areas of use affected by a level of usage. Categories are identified by a number and/or a symbol.

The first number gives an idea of the environment:

- 2: domestic
- 3: commercial
- 4: industrial

The second number indicates the usage:

- 1: moderate
- 2: general
- 3: heavy
- 4: very heavy

These two classifications are complementary, the criteria defined are not all identical (presence of water for example).

This is a classification of use zones based on the use intensity.

This category system is established by the standard NF EN ISO 10874 for resilient flooring, textile and laminate. It does as well the distinction between the "domestic" use (categories 21, 22, 22+, 23 for homes) and the "public and commercial" use (categories 31, 32, 33, 34). Categories increase according to the intensity of use. This classification is linked to the flooring requirement.



**Domestic Heavy:** The floor is suitable for intensive use in any home. It's perfect for kitchens, playrooms or any other space with a high frequency of traffic.



**Commercial Very Heavy:** Suitable for commercial spaces with a very intense traffic zone such as class rooms with direct access to the outside, museums or public meeting rooms.



**Commercial Moderate:** Suitable for moderate use in commercial applications such as private offices, hotel rooms or flats.



**Industrial Moderate:** The floor is ideal for industrial spaces with a moderate use such as restaurant chains or those with a high frequency of traffic, medium-sized commercial areas or small light equipment workshops.



**Commercial General:** A floor of absolute quality for domestic use but also of high quality for public, administrative or commercial places with intermediate use such as waiting rooms, hotel lobbies, exhibition halls, shops, collective offices, libraries or classrooms.



**Industrial General:** Suitable for medium industrial use such as supermarkets, laboratories with production lines or workshops with pneumatic trolleys.



**Commercial Heavy:** Perfect for intensive commercial use in shops and public areas such as cafeterias, waiting rooms, amphitheatres, restaurants and kitchens, staircases or offices.



**Industrial Heavy:** The floor is suitable for industrial spaces where traffic is actually high-frequency such as warehouse facilities.

## OUR ICONS EXPLAINED



**Comfort Bac:** A polymer foam backing with excellent sound absorbing qualities providing warmth and comfort underfoot.



**Tex Bac:** Our textile backing smoothens irregularities in the subfloor making your floor even more soundproof.



**Power Bac:** A resilient foam backing with "bounce-backability" ensuring appearance retention.



**Black Tex Bac:** Our trendy black textile backing smoothens irregularities in the subfloor making your floor even more soundproof.



**Tough Bac:** A dense polymer foam with excellent indentation resistance.



**Solid Bac:** An extremely dense and robust backing providing excellent durability and wear resistance for high traffic areas.



**Waffle Bac:** A foam backing with a waffle structure. This allows you to install your floor even faster and to cover imperfections on the subfloor more easily.



**Premium coating:** The protective topcoat prevents scuffing and staining, making your floor easy to clean.



**Slip resistant:** Our innovative slip retardant enhancement - your safest choice for kitchens and bathrooms.



**Anti-Slip coating:** Ideal for when you need extra safety and protection. Our Anti-Slip coating gives added peace of mind for areas like a toilet, kitchen or care home.



**Natural look:** Combined thermal and mechanical embossing on top of advanced printing technologies results in the natural look of real wooden or tile floor.



**R10:** Perfect for domestic areas where an increased slip risk may occur, like kitchens, washrooms, hallways and even bathrooms (when using a bathmat). It's easy to clean while still possessing decent anti-slip properties.



**Floor heating:** Compatible with underfloor heating. Vinyl floors have a low thermal resistance and are therefore ideal for underfloor heating.



**R11:** Superior slip resistance for both dry and wet environments, which makes this perfect for use in home environments varying from damper areas such as bathrooms and kitchens, wet rooms to hallways and even living rooms.

## CE marking

This marking is applicable for PVC flooring, linoleum, laminate and wood floor. It represents on packaging the visible sign that the product is in line with the specifications provided by the regulation for Products of Construction and by the standards harmonized (for example NF EN 14041). It has also for purpose the free circulation of products in the European Economic Area.

This is the manufacturer, or his representative, after having established the declaration of conformity, affixed under his responsibility the marking before the first launch of the product in the market. For the resilient flooring, textiles and laminate (harmonized standard EN 14041) this marking is mandatory since 01/01/2007, it is based on respect of essential requirements, translated to the harmonized standard in terms of characteristics to check and level of conformity.

These characteristics are the reaction to fire, formaldehyde emission, pentachlorophenol content, sliding resistance, electrical behavior, thermal conductivity and waterproofing.

CE marking and the measures it involves (declaration of conformity of the manufacturer and, if so, certificate of conformity) permit to presume that the product conformity concerns the requirements of the Construction Products Directive.

Real passport for the free circulation of products in all the European Economic Area, the CE marking concerns all the construction products which technical specifications (harmonized standards or European technical approvals) exist.

It constitutes neither a quality label nor an origin label and it does not deal with the execution of the products.

## The classification Fire: The EUROCLASS ES system

French regulation (under the order of November 21st 2002 - JO of December 31st 2002) lays down the test methods and the classification categories on what concerns fire reaction and in particular for the construction products (of which the flooring and mural).

A1fl-	Incombustible
A2fl-s1	M0
A2fl-s2	M3
Bfl-s1	M3
Cfl-s2	M3
Dfl-s1(1)	M4
Dfl-s2	M4

The order indicates tests to be performed plus the selected criterias for the classification specified in the standard NF EN 13 501-1. Wood flooring belongs to the standard NF EN 14342, sports flooring the standard NF EN 14904, and finally wall covering the standard NF EN 15102.

(1) exemption from providing information foreseen under the order of the 04/11/1975.

The codification of A to F in accordance with the materials fire reaction (A being the best position). Euroclasses also take into account two essential criteria (laboratory tests):

CE marking is mandatory since January 2007 for flooring falling within the harmonized standard EN 14 041. Thus we have to declare the fire reaction for our entire range of products according to the EUROCLASSES system.

- Smoke opacity (quantity and speed) indicated s for "smoke"
  - s1 : low quantity/speed
  - s2 : moderate quantity/speed
  - s3 : high quantity/speed

CE marking has to be accompanied by a Declaration of Performance. This one provides detailed information about the essential characteristics of the products, especially the fire classification. The table below lays down the classes determined according to the standard NF EN 13 501-1, admissible under the rules of the previous classification M, mentioned in the regulations of security against fire. This is an extract of annex 4 under the order of November 21st 2002 for floors. Annex 4 classes according to NF EN 13 501-1 requirement

- Droplets and ignited debris indicated d for "droplets"
  - d0 : no debris
  - d1 : no debris which ignition lasts more than 10 seconds
  - d2 : neither d0 nor d1

## Emission class

The emitted substances by the construction products can contaminate the indoor air. It is declared and expressed with emission class, according to the rates of some substances considered individually or the sum of each volatile organic compounds (COVT or TCOV).

- Class E1/E2: formaldehyde emission declared as part of the CE marking and the declarations of performance (DoP). E1 means that the formaldehyde content is lower than 0,1ppm (=0,12 mg/m<sup>3</sup> of air).

- Labelling for purpose of health: emission characteristics of substances are formalized according to a four class scale, from A+ to C, the A+ class indicating an emission level very low, the C class, a high emission level.

## Abrasion resistance

The abrasion resistance refers to the value corresponding to the ability of a flooring to resist to the abrasion use. The test is realized by means of a TABER abramer expressed in abrasion classes according to the European standard EN 13329. These classes play an important role for the determination of classes of use which define the area of use of a laminate flooring. The abrasion resistance is one of the numerous criterias to take into account for the qualitative evaluation.

# INSTALLATION INSTRUCTIONS

GLUED DOWN CUSHION VINYL

## BEFORE THE INSTALLATION

Before installation, always check if the product is the one you ordered in terms of specifications, design and colour. At the same time carefully inspect the material for any visible damages and defects.

### RECOMMENDED TOOLS



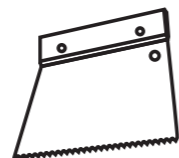
A sharp knife with a straight blade for long cuts



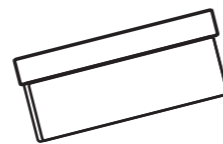
A long metal ruler or straight edge



A tape measure



Adhesive trowel: type A2



Smoothing press


### INSTALLATION CONDITIONS

Planarity	< 7 mm under the 2 m rule
Storage	≤ 2 m store upright / > 2 m store horizontally
Temperature	Minimum 18°C for a period of 24h before installation
Humidity	Concrete ≤ 4% / Anhydrite ≤ 0.5%

### CONDITIONS FOR THE SUBFLOOR

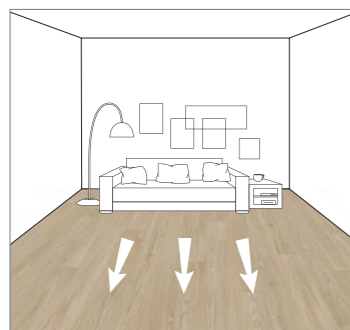
Subfloors must be absolutely level, clean and free from grit, dust, grease, oil, polish & old adhesive. It is also essential that the subfloor is dry because dampness can cause discolouration to the floor.

Subfloor	Preliminary work
Screeds	Permitted after sanding and application of primer
Parquet / Carpets	Must be removed
Ceramic	Permitted after levelling compound
Asbestos tiles	Glued installation not allowed

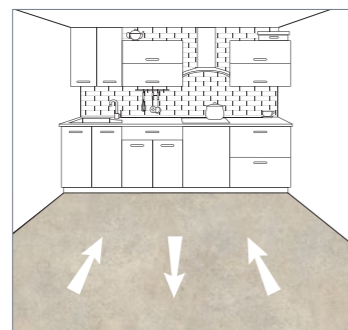
 Pay attention that the underfloor heating and cooling is switched off 48 hours before and 48 hours after the installation.

## INSTALLATION

### LAYING DIRECTION



For plank and tiles designs, sheets should be installed in the same direction.



For most all-over designs, alternate sheets should be installed in opposite directions. Check design specifications before you start.

- Take care to always have the same batch in the same room.
- Cut and flatten the rolls 24 hours before installation.
- When you do a multiple piece installation, make sure the seams between rolls are positioned away from areas of heavy traffic and lots of light.
- If you want to glue the vinyl floor to the subfloor, please use acrylic glue. For textile backing you can also use double sided tape.
- Cold welding; after the installation overlap the strips to make a double cut.

### ADHERING VINYL TO SUBFLOOR



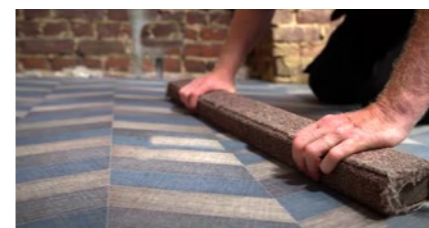
1. Turn back the first piece of flooring to expose about half of the subfloor.



2. Apply the adhesive to the subfloor in accordance with the adhesive manufacturer's instructions.



3. Allow the recommended drying time and then reposition the flooring material over the prepared subfloor.



4. Roll out with smoothing press.



5. Do the same with the other pieces of flooring, take care to not overlap the glue.



6. With the material now lying flat around the fittings and corners, the final cutting along the wall lengths can be carried out.

### CORNER CUTTING INSTALLATION



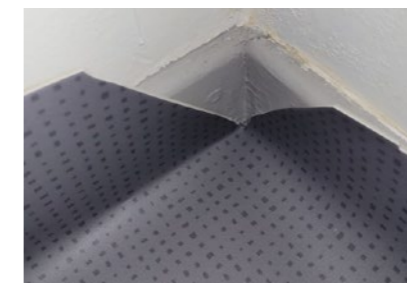
1. Fold your product twice on itself, looking for the inside corner.



2. Place your blade point in the corner and cut until outside.



3. Pull out this part



4. Cut section as shown, once completed open up to see perfect corner shape cut - trim edges.

### AFTER INSTALLATION



First 48h:  
Keep traffic to a minimum.



First 72h:  
Do not move heavy objects back into place.

VIEW OUR FULL  
INSTALLATION  
GUIDE



SCAN ME

**BEAU  
FLOR®**  
we decorate your floor

Beauflor has the right flooring for all domestic and public spaces. We offer a very wide choice of features and designs. Discover the full range at:

**[www.beauflor.com](http://www.beauflor.com)**

Non-contractual document. Printing techniques may cause small variations in the colours shown. Beauflor reserves the right to modify its range without notice.

FRONT COVER: CUSTOMIZED DESIGN - BEAUFLOR CREATE



SARA 979M - TECHNO-TEX

# READY TO GO VINYL?

**B.I.G. Floorcoverings nv**  
Rijksweg 442  
8710 Wielsbeke - Belgium  
T +32 (0)56 67 66 11  
info@beauflor.com

[www.beauflor.com](http://www.beauflor.com)



Beaulieu  
International  
Group

